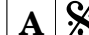


Choro lento ♩ = 68

A 



Musical score for Violino I, Violino II, Viola, Violoncello, and Contrabaixo. The score is in 2/4 time with a key signature of one sharp (F#). It features a first ending marked 'A' with a repeat sign.



Musical score for Vln. I, Vln. II, Vla., Vc., and Cb. The score starts at measure 5. It continues the musical arrangement in 2/4 time with a key signature of one sharp (F#).

Sons de Camilhões

10

Vln. I

Vln. II

Vla.

Vc.

Cb.

15

Vln. I

Vln. II

Vla.

Vc.

Cb.

Sons de Camilhões

20 **FIM** **B**

Vln. I
Vln. II
Vla.
Vc.
Cb.

25

Vln. I
Vln. II
Vla.
Vc.
Cb.

Sons de Camilhões

30

Vln. I

Vln. II

Vla.

Vc.

Cb.

D.S. e FIM

34

Vln. I

Vln. II

Vla.

Vc.

Cb.

1.

2.

Choro lento $\text{♩} = 68$

A §

6

11

16

B

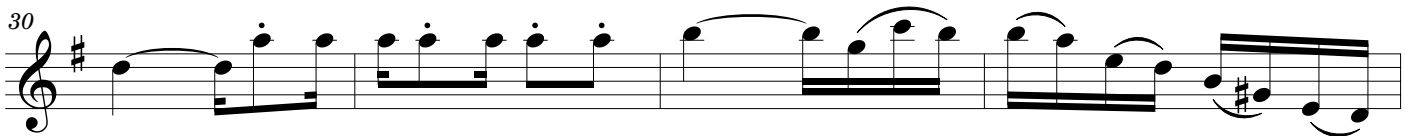
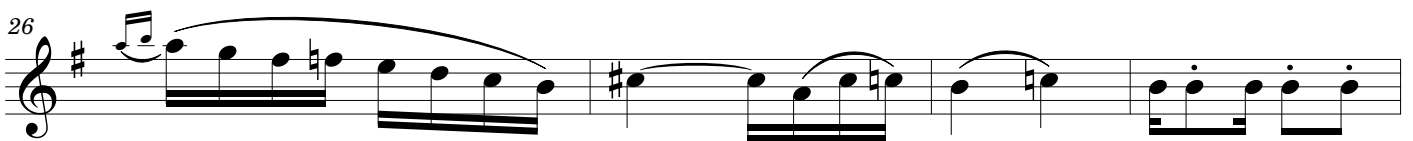
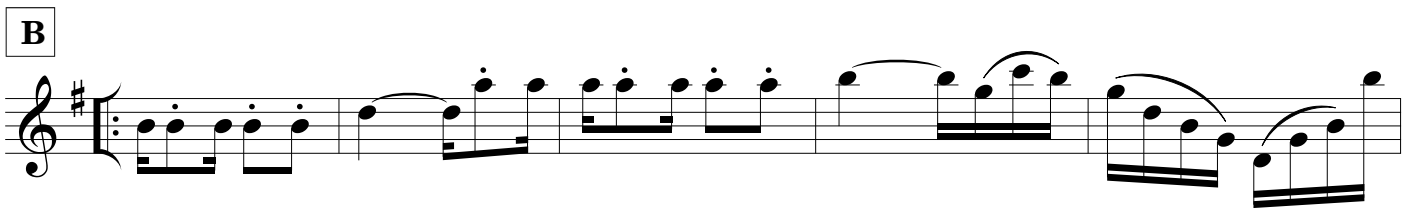
26

30

34

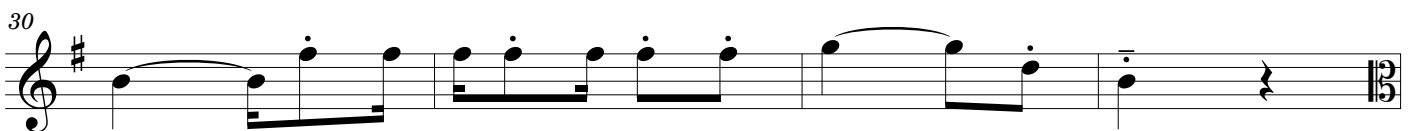
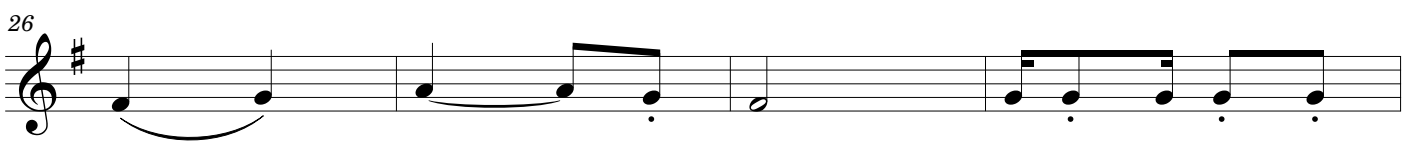
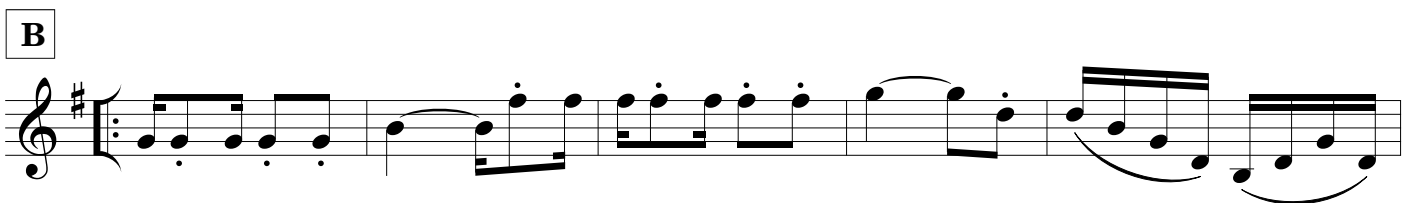
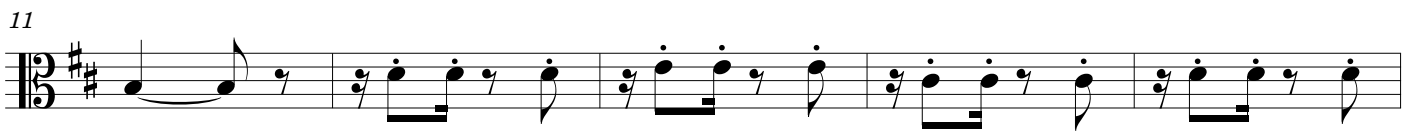
Choro lento $\text{♩} = 68$

A S



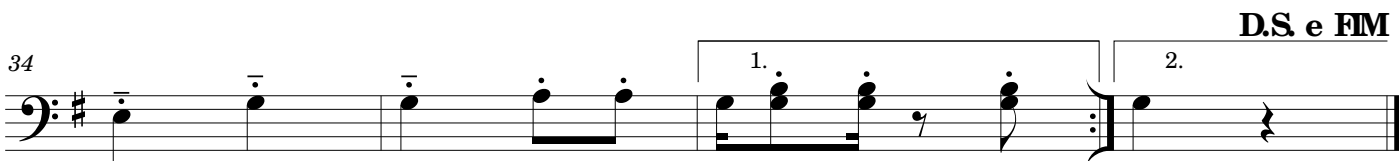
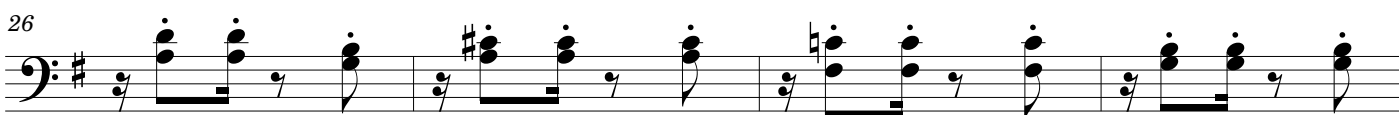
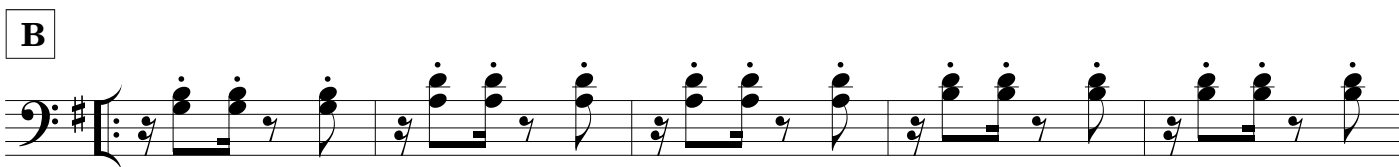
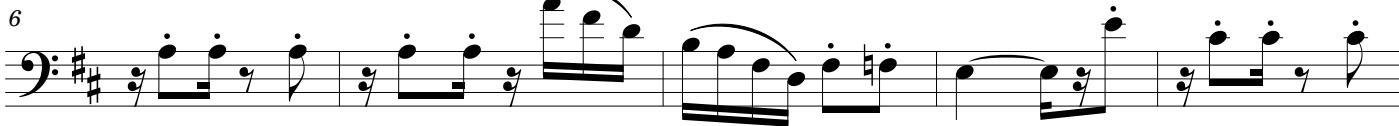
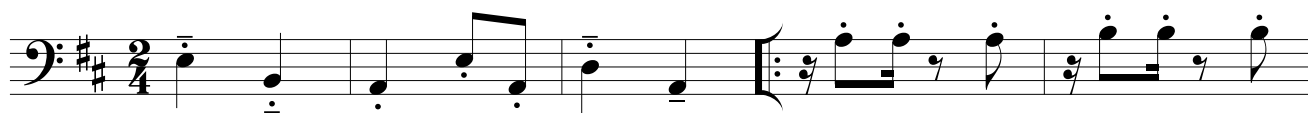
Choro lento $\text{♩} = 68$

A S



Choro lento $\text{♩} = 68$

A ♩

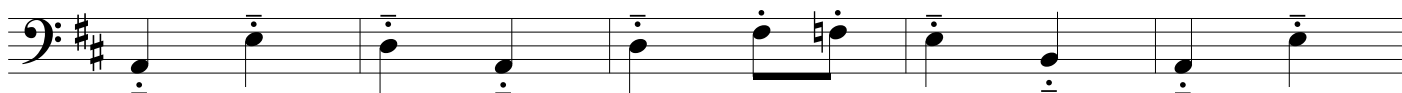


Choro lento $\text{♩} = 68$

A C



6



11



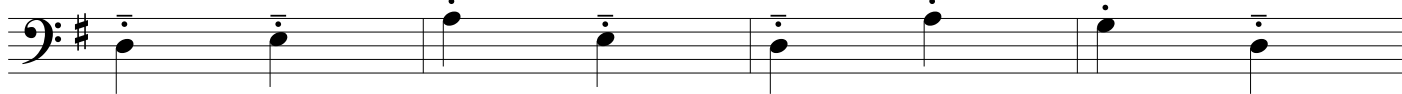
16



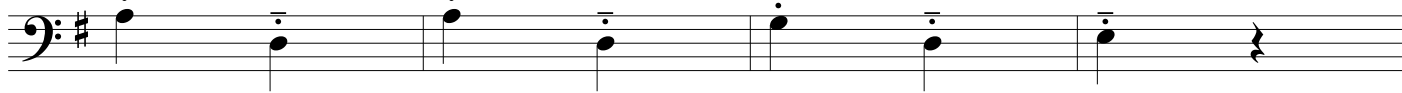
B



26



30



34

