



de Souza Alencar Gabriel

Três pequenos poemas

About the artist

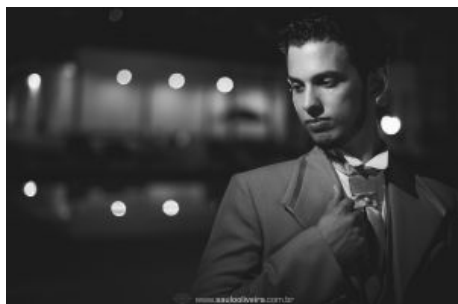
Brazilian composer born in Roraima, in the Brazilian Amazon. Learned most of what knows by himself.
Lived in the USA on 2008-2009.
Graduated with honors in International Relations.

I would very much appreciate comments on my compositions. Please don't hesitate to give tips as well, I am here to improve.

Email for contact: gabriel.souzalencar@gmail.com

Artist page : <https://www.free-scores.com/Download-PDF-Sheet-Music-gabriel-alencar.htm>

About the piece



Title:	Três pequenos poemas
Composer:	Gabriel, de Souza Alencar
Copyright:	Copyright © de Souza Alencar Gabriel
Instrumentation:	Guitar solo (standard notation)
Style:	Contemporary

de Souza Alencar Gabriel on [free-scores.com](https://www.free-scores.com)



This work is not Public Domain. You must contact the artist for any use outside the private area.



- listen to the audio
- share your interpretation
- comment
- contact the artist

Três pequenos poemas

I. Saudade

Gabriel Alencar

Adagio ♩ = 50
"Let ring" always

Acoustic Guitar

mp *p* *mp*

Ac. Gtr.

rit. *a tempo* *mf* *p*

Ac. Gtr.

Agitato (♩ = c. 75) *p cresc.* *f*

Ac. Gtr.

rit. * **Adagio** ♩ = 50 *mf*

*Deixar soar até quase desaparecer o som

II. Brisa

Gabriel Alencar

Tranquilo ♩ = 55

Acoustic Guitar

Ac.Gtr.

Ac.Gtr.

Ac.Gtr.

Ac.Gtr.

Ac.Gtr.

Ac.Gtr.

Ac.Gtr.

III. Despedida em gotas

Gabriel Alencar

Largo (♩ = 70)

Acoustic Guitar

Musical notation for Acoustic Guitar, measures 1-7. The piece is in 4/4 time and features a series of chords. Measure 1 starts with a treble clef and a 4/4 time signature. The chords are: G major (x02320), A major (x02220), B major (x2442), C major (x3234), D major (x2423), E major (x1422), and F major (x2323).

p *cresc.*

Ac.Gtr.

Musical notation for Acoustic Guitar, measures 8-14. Measure 8 begins with a fermata over the first chord. The chords are: G major (x02320), A major (x02220), B major (x2442), C major (x3234), D major (x2423), E major (x1422), and F major (x2323). The dynamics are marked as *f* (forte) at the start of measure 8, *dim.* (diminuendo) at the start of measure 9, and *p* (piano) at the end of measure 14.