



# Bernard Dewagtere

France, SIN LE NOBLE

## Berceuse (Lullaby) (Op. 16) Fauré, Gabriel

### About the artist

Doctor in musicology, conductor and composer.

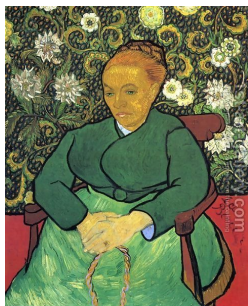
Compositions and arrangements from all eras, in all styles or musical genres and for any instrument or vocal training.

**Qualification:** PhD Musicology

**Associate:** SACEM - IPI code of the artist : 342990

**Artist page :** <https://www.free-scores.com/Download-PDF-Sheet-Music-bernard-dewagtere.htm>

### About the piece



**Title:** Berceuse (Lullaby) [Op. 16]

**Composer:** Fauré, Gabriel

**Arranger:** Dewagtere, Bernard

**Copyright:** Copyright © Dewagtere, Bernard

**Instrumentation:** Cello, Piano

**Style:** Romantic

**Comment:** The Dolly Suite, Op. 56, is a collection of pieces for piano four-hands by Gabriel Fauré. The best-known section of the suite, the Berceuse, has been arranged for several combinations of instruments. The Berceuse, marking Dolly's first birthday, was a very early piece, composed in 1864 for Suzanne Garnier, the daughter of a family friend. In 1893 Fauré made some small amendments and changed its title from "La Chanson dans ..." (more online)

### Bernard Dewagtere on [free-scores.com](https://www.free-scores.com)

#### LICENSE

This sheet music requires an authorization  
- for public performances  
- for use by teachers

**Buy this license at :**

<https://www.free-scores.com/licence-partition-uk.php?partition=40805>



- listen to the audio
- share your interpretation
- comment
- pay the licence
- contact the artist

Prohibited distribution on other website.

# Berceuse

opus 16

Gabriel Fauré (1893)

Transc. : Bernard Dewagtere

Allegretto moderato

Con sord.

Cello

Piano

*dolcissimo sempre*

Pno

Pno

Pno

Berceuse

2  
22

1.

Pno

28

Pno

*cresc.*

34

*espress.*

Pno

*sempre legato*

40

*dolce*

Pno

Berceuse

46

Piano score for measures 46-51. The left hand (bass clef) features a melodic line with slurs and ties. The right hand (treble clef) has a rhythmic accompaniment of eighth notes and chords. The key signature has two sharps (F# and C#).

52

Piano score for measures 52-57. The left hand continues the melodic line with slurs. The right hand maintains the rhythmic accompaniment. The key signature remains two sharps.

58

*poco rit.*

Piano score for measures 58-63. The left hand has a long note with a slur. The right hand has a melodic line. The tempo marking *poco rit.* is present. A first ending bracket covers measures 60-61, with a second ending bracket for measure 62. The key signature is two sharps.

64

Piano score for measures 64-69. The left hand has a melodic line with slurs. The right hand has a rhythmic accompaniment. The key signature is two sharps.

Berceuse

4  
70

Piano score for measures 67-70. The right hand features a melodic line with slurs and ties, while the left hand provides a steady accompaniment of eighth notes. Measure 70 ends with a fermata.

76

Piano score for measures 71-76. The right hand continues with a melodic line, and the left hand has a more active accompaniment with some rests. Measure 76 ends with a fermata.

82

*poco rit.* *a tempo*

Piano score for measures 77-82. The right hand has a melodic line with slurs. The left hand accompaniment includes some rests. The tempo marking *poco rit.* is present above measures 80-81, and *a tempo* is above measure 82. Measure 82 ends with a fermata.

88

*ossia harmonic*

Piano score for measures 83-88. The right hand features a melodic line with slurs. The left hand accompaniment includes some rests. The tempo marking *ossia harmonic* is above measure 84. Measure 88 ends with a fermata.