



Bernard Dewagtere

France, SIN LE NOBLE

Berceuse (Lullaby) (Op. 16) Fauré, Gabriel

About the artist

Doctor in musicology, conductor and composer.

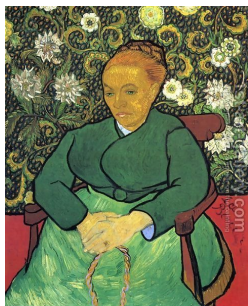
Compositions and arrangements from all eras, in all styles or musical genres and for any instrument or vocal training.

Qualification: PhD Musicology

Associate: SACEM - IPI code of the artist : 342990

Artist page : <https://www.free-scores.com/Download-PDF-Sheet-Music-bernard-dewagtere.htm>

About the piece



Title: Berceuse (Lullaby) [Op. 16]

Composer: Fauré, Gabriel

Arranger: Dewagtere, Bernard

Copyright: Copyright © Dewagtere, Bernard

Instrumentation: Violin and Piano

Style: Romantic

Comment: The Dolly Suite, Op. 56, is a collection of pieces for piano four-hands by Gabriel Fauré. The best-known section of the suite, the Berceuse, has been arranged for several combinations of instruments. The Berceuse, marking Dolly's first birthday, was a very early piece, composed in 1864 for Suzanne Garnier, the daughter of a family friend. In 1893 Fauré made some small amendments and changed its title from "La Chanson dans ..." (more online)

Bernard Dewagtere on [free-scores.com](https://www.free-scores.com)

LICENSE

This sheet music requires an authorization
- for public performances
- for use by teachers

Buy this license at :

<https://www.free-scores.com/licence-partition-uk.php?partition=40783>



- listen to the audio
- share your interpretation
- comment
- pay the licence
- contact the artist

Prohibited distribution on other website.

Berceuse

opus 16

Gabriel Fauré (1893)

Transc. : Bernard Dewagtere

Allegretto moderato

Con sord.

Violon

Piano

dolcissimo sempre

Vln.

Pno

Vln.

Pno

Vln.

Pno

Berceuse

2
22

Vln. *1.*

Pno

28

Vln. *V*

Pno

cresc.

34

Vln. *espress.*

Pno *sempre legato*

40

Vln. *dolce*

Pno

Berceuse

46

Vln.

Pno

Detailed description: This system contains measures 46 through 51. The Violin part (Vln.) is written in a single staff with a treble clef and a key signature of two sharps (F# and C#). It features a melodic line with various articulations, including slurs and accents. The Piano part (Pno) is written in two staves (treble and bass clefs) and provides a harmonic accompaniment with chords and moving lines.

52

Vln.

Pno

Detailed description: This system contains measures 52 through 57. The Violin part continues its melodic development with long slurs. The Piano part maintains its accompaniment, with some changes in chord voicings and rhythmic patterns.

58

Vln. *poco rit.*

Pno

sempre dolce

2.

Detailed description: This system contains measures 58 through 63. The Violin part begins with a first ending (marked '1.') and a second ending (marked '2.'). The tempo marking *poco rit.* (poco ritardando) is placed above the first ending. The instruction *sempre dolce* (always dolce) is placed below the second ending. The Piano part continues its accompaniment throughout.

64

Vln.

Pno

Detailed description: This system contains measures 64 through 69. The Violin part features a melodic line with slurs. The Piano part continues with its accompaniment, showing some changes in the bass line.

Berceuse

4
70

Vln.

Pno

76

Vln.

Pno

82

Vln.

Pno

poco rit. *a tempo*

88

Vln.

Pno

ossia harmonic