



Elmar Jan Ejay

Arranger, Composer

Philippines, Namocon, Tigbauan Iloilo

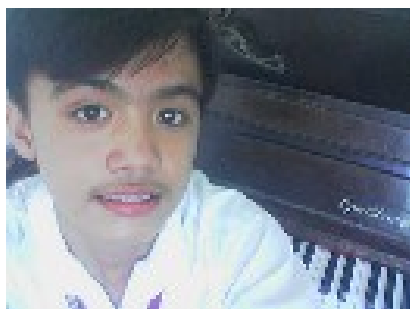
About the artist

Ejay was born last August 2, 1995. He is living with his family in Namocon Tigbauan Iloilo Philippines. He was trying to be one of the greatest composers in piano and voice. and ow, he is starting to compose in piano and voice

Qualification: Grade 8

Personal web: www.superboyelmar12.webs.com

About the piece



Title:	Etude no. 4 op. 1 [first etudes]
Composer:	Ejay, Elmar Jan
Arranger:	Ejay, Elmar Jan
Licence:	Public domain
Publisher:	Ejay, Elmar Jan
Instrumentation:	Piano solo
Style:	Classical
Comment:	The piece is like a waltz

Elmar Jan Ejay on [free-scores.com](http://www.free-scores.com)

<http://www.free-scores.com/Download-PDF-Sheet-Music-elmarjan-bolano-yahoo-com.htm>

- Contact the artist
- Write feedback comments
- Share your MP3 recording
- Web page access with QR Code :



This work is not Public Domain. You must contact the artist for any use outside the private area.

Etude no. 4 op. 1

FIRST ETUDES

Elmar Jan Bolaño

Allegretto

Piano

The first system of the piano etude, measures 1-4. The music is in 3/8 time and E-flat major. The right hand features a descending eighth-note scale starting on G4, while the left hand plays a simple accompaniment of quarter notes and chords.

Pno.

The second system of the piano etude, measures 5-8. The right hand continues the descending eighth-note scale, and the left hand provides a steady accompaniment.

Pno.

The third system of the piano etude, measures 9-12. The right hand features a more complex rhythmic pattern with sixteenth notes, while the left hand continues with quarter notes and chords.

Pno.

The fourth system of the piano etude, measures 13-15. The time signature changes to 6/4. The right hand has a melodic line with a fermata, and the left hand plays a simple accompaniment.

Pno.

The fifth system of the piano etude, measures 16-17. The right hand has a melodic line with a fermata, and the left hand plays a simple accompaniment.

Pno.

The sixth system of the piano etude, measures 17-20. The right hand has a melodic line with a fermata, and the left hand plays a simple accompaniment.