



Fabian Dörschel

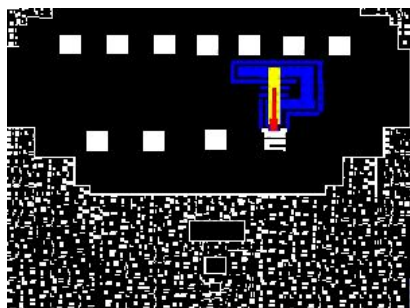
Germany, Meinersen

Fugue over "Du, meine Seele, singe" Ebeling, Johann Georg

About the artist

Artist page : <https://www.free-scores.com/Download-PDF-Sheet-Music-mindwitness.htm>

About the piece



Title:	Fugue over "Du, meine Seele, singe"
Composer:	Ebeling, Johann Georg
Arranger:	Dörschel, Fabian
Copyright:	Copyright © Fabian Dörschel
Publisher:	Dörschel, Fabian
Instrumentation:	Keyboard (piano, harpsichord or organ)
Style:	Modern classical
Comment:	I wrote this fugue over an original church hymn ("Du meine Seele, singe"), the tune of which was originally written by Johann Georg Ebeling.

Fabian Dörschel on [free-scores.com](https://www.free-scores.com)



This work is not Public Domain. You must contact the artist for any use outside the private area.

Prohibited distribution on other website.



- listen to the audio
- share your interpretation
- comment
- contact the artist

Du, meine Seele, singe

Fugue over a church hymn by Johann Georg Ebeling

Moderato Allegretto

July 21st-25th, 2017

Measures 1-8 of the fugue. The music is in 4/4 time with a key signature of two flats (B-flat and E-flat). The first staff (treble clef) contains the main melody, starting with a whole rest followed by a half note G4, then a series of eighth and sixteenth notes. The second staff (bass clef) contains a whole rest followed by a half note G3. The third staff (bass clef) contains a whole rest followed by a half note G2.

9

Measures 9-13 of the fugue. The first staff continues the melody with eighth and sixteenth notes. The second staff contains a series of chords and moving lines. The third staff contains a whole rest followed by a half note G2.

14

Measures 14-17 of the fugue. The first staff continues the melody. The second staff contains a series of chords and moving lines. The third staff contains a whole rest followed by a half note G2.

18

Measures 18-21 of the fugue. The first staff continues the melody. The second staff contains a series of chords and moving lines. The third staff contains a whole rest followed by a half note G2.

22



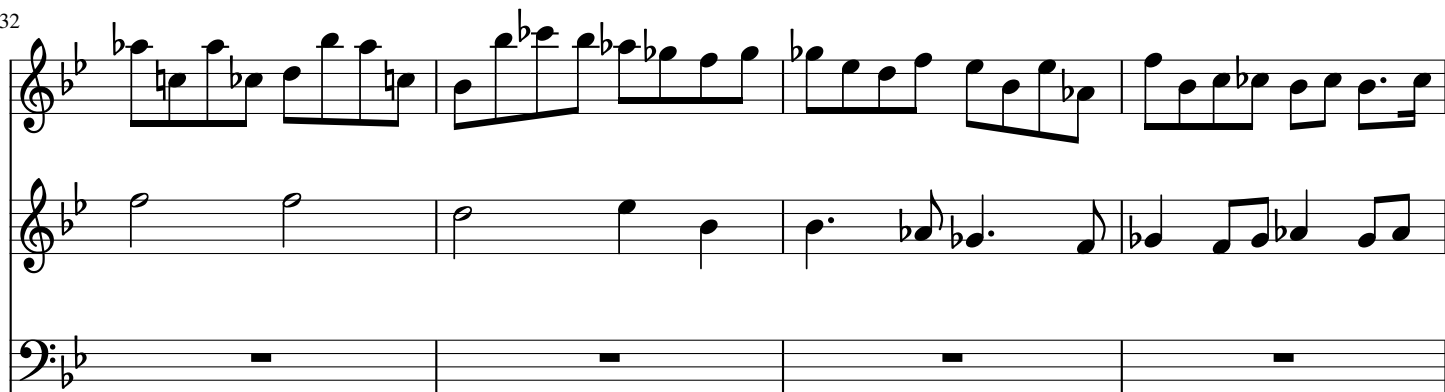
26



29



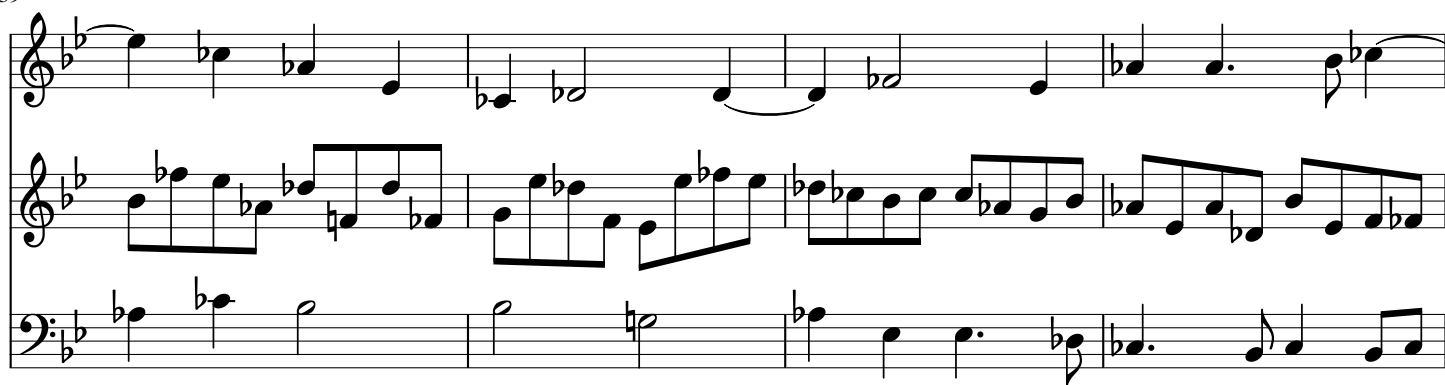
32



36



39



43



46



49



52



55



58



61

Measures 61-65 of a musical score in B-flat major (two flats). The score is written for three staves. The first staff contains a melodic line with eighth and sixteenth notes. The second staff contains a harmonic line with quarter and eighth notes. The third staff contains a bass line with a triplet of eighth notes in the first measure, followed by quarter and eighth notes. The key signature has two flats (B-flat and E-flat).

66

Measures 66-71 of a musical score in B-flat major. The score is written for three staves. The first staff continues the melodic line. The second staff continues the harmonic line. The third staff continues the bass line, featuring a triplet of eighth notes in the first measure of this system. The key signature has two flats.

72

Measures 72-75 of a musical score in B-flat major. The score is written for three staves. The first staff features a melodic line with a half note and a quarter note. The second staff features a harmonic line with a half note and a quarter note. The third staff features a bass line with a half note and a quarter note. The key signature has two flats.