

The King of Denmark's Galliard

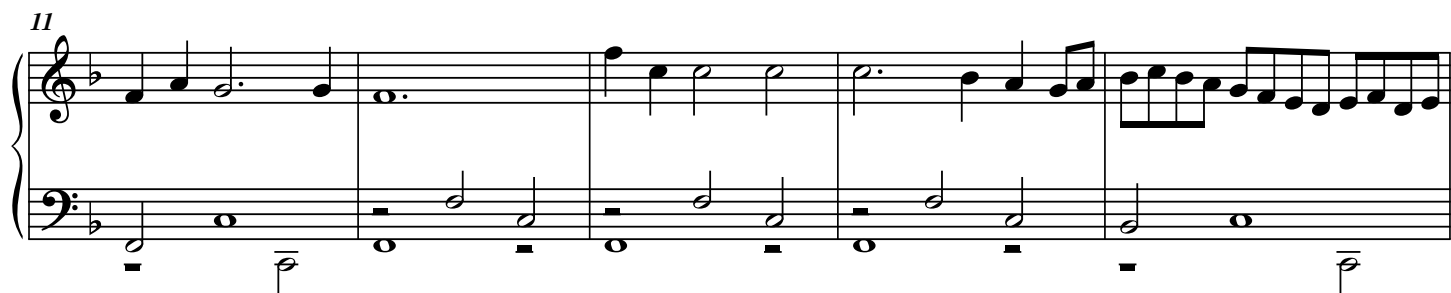
Transcribed for Concert Organ solo

edited by
Maurizio Machella

John DOWLAND
1563-1626



[Allegro]



21

Measures 21-24. Treble clef: G4, A4, B4, C5, B4, A4, G4, F#4, E4, D4. Bass clef: G2, B1, D2, E2, F2, G2, A2, B2, C3, D3, E3, F3, G3, A3, B3, C4, D4, E4, F4, G4, A4, B4, C5, B4, A4, G4, F#4, E4, D4.

25

Measures 25-28. Treble clef: G4, A4, B4, C5, B4, A4, G4, F#4, E4, D4. Bass clef: G2, B1, D2, E2, F2, G2, A2, B2, C3, D3, E3, F3, G3, A3, B3, C4, D4, E4, F4, G4, A4, B4, C5, B4, A4, G4, F#4, E4, D4.

30

Measures 30-33. Treble clef: G4, A4, B4, C5, B4, A4, G4, F#4, E4, D4. Bass clef: G2, B1, D2, E2, F2, G2, A2, B2, C3, D3, E3, F3, G3, A3, B3, C4, D4, E4, F4, G4, A4, B4, C5, B4, A4, G4, F#4, E4, D4.

35

Measures 35-38. Treble clef: G4, A4, B4, C5, B4, A4, G4, F#4, E4, D4. Bass clef: G2, B1, D2, E2, F2, G2, A2, B2, C3, D3, E3, F3, G3, A3, B3, C4, D4, E4, F4, G4, A4, B4, C5, B4, A4, G4, F#4, E4, D4.

39

Measures 39-43. Treble clef: G4, A4, B4, C5, B4, A4, G4, F#4, E4, D4. Bass clef: G2, B1, D2, E2, F2, G2, A2, B2, C3, D3, E3, F3, G3, A3, B3, C4, D4, E4, F4, G4, A4, B4, C5, B4, A4, G4, F#4, E4, D4.

44

Measures 44-47. Treble clef: G4, A4, B4, C5, B4, A4, G4, F#4, E4, D4. Bass clef: G2, B1, D2, E2, F2, G2, A2, B2, C3, D3, E3, F3, G3, A3, B3, C4, D4, E4, F4, G4, A4, B4, C5, B4, A4, G4, F#4, E4, D4.

49

System 1 (Measures 49-53): Treble clef contains a melody with a trill on measure 50 and a fermata on measure 51. Bass clef contains a steady accompaniment of eighth notes.

54

System 2 (Measures 54-58): Treble clef continues the melody with eighth and sixteenth notes. Bass clef accompaniment remains consistent with eighth notes.

59

System 3 (Measures 59-63): Measure 60 features a trill. Measure 61 has a whole rest in the treble. The melody resumes in measure 62 with eighth notes. Bass clef accompaniment continues with eighth notes.

64

System 4 (Measures 64-68): Treble clef includes a dotted half note and eighth notes. Bass clef accompaniment features a more complex pattern with chords and eighth notes.

69

System 5 (Measures 69-72): Treble clef has a rapid sixteenth-note passage. Bass clef accompaniment consists of chords and eighth notes.

73

System 6 (Measures 73-78): Measure 73 features a trill. The melody continues with eighth and sixteenth notes. Bass clef accompaniment continues with eighth notes.

79

84

89

93

The King of Denmark's Galiard

Cantus II Io. Dowland