



Bernard Dewagtere

France, SIN LE NOBLE

6 duets for Edvard Munch (4. Woman in Three Stages)

About the artist

Doctor in musicology, conductor and composer.

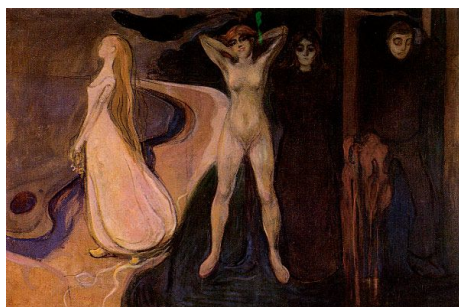
Compositions and arrangements from all eras, in all styles or musical genres and for any instrument or vocal training.

Qualification: PhD Musicology

Associate: SACEM - IPI code of the artist : 342990

Artist page : <https://www.free-scores.com/Download-PDF-Sheet-Music-bernard-dewagtere.htm>

About the piece



Title: 6 duets for Edvard Munch [4. Woman in Three Stages]
Composer: Dewagtere, Bernard
Copyright: Copyright © Dewagtere, Bernard
Instrumentation: 2 Violoncellos (duet)
Style: Early 20th century
Comment: Woman in Three Stages, 1894 - Oil on canvas 164 x 250 cm

Bernard Dewagtere on [free-scores.com](https://www.free-scores.com)

LICENSE

This sheet music requires an authorization
- for public performances
- for use by teachers

Buy this license at :

<https://www.free-scores.com/licence-partition-uk.php?partition=41787>



- listen to the audio
- share your interpretation
- comment
- pay the licence
- contact the artist

Prohibited distribution on other website.

6 duets for Edvard Munch

4. Woman in Three Stages

Bernard Dewagtere

Allegretto

Cello 1

Cello 2

mf

mf

mf

6

1

2

sf

mp

p

sf

mp

p

11

1

2

f

f

mf

mp

16

1

2

mf

rit.

molto rit

pp

6 duets for Edvard Munch

2
22 **Moderato**

1 *mf*

2 *mf* *mp*

Detailed description: This system contains measures 22 through 25. It features two staves, 1 and 2, in a key signature of one sharp (F#). Staff 1 begins with a series of eighth notes, while staff 2 has a more sparse accompaniment. Dynamic markings include *mf* and *mp*. There are hairpins indicating crescendos and decrescendos across the measures.

26

1 *mf* *sf* *mp*

2 *mf* *mp* *sf* *mp*

Detailed description: This system contains measures 26 through 29. The musical texture continues with similar rhythmic patterns. Dynamic markings include *mf*, *mp*, *sf*, and *mp*. Hairpins are used to shape the dynamics throughout the system.

31

1 *p* *f* *tr*

2 *p* *f* *mf* *mp*

Detailed description: This system contains measures 31 through 34. Measure 33 features a trill in the first staff, marked *8va tr*. Dynamic markings include *p*, *f*, *mf*, and *mp*. Hairpins indicate dynamic changes.

37

1 *mp* *pp*

2 *pp*

loco *rit.* *molto rit.* *Con sord.*

Detailed description: This system contains measures 37 through 40. The tempo markings are *loco*, *rit.*, and *molto rit.*. Dynamic markings include *mp* and *pp*. The instruction *Con sord.* (Con sordina) is present in measure 39. Hairpins indicate a decrescendo.

Grave

43

1
Con sord. *p*

2
p *mp*

Detailed description: This system covers measures 43 to 46. The first staff (treble clef) begins with a piano (*p*) dynamic and includes the instruction 'Con sord.' (con sordina). It features a melodic line with eighth-note patterns and a sustained chord. The second staff (bass clef) provides a harmonic accompaniment with a piano (*p*) dynamic, transitioning to mezzo-piano (*mp*) in measure 45. A double bar line is present after measure 44.

47

1
p

2
p *p*

Detailed description: This system covers measures 47 to 50. The first staff (treble clef) continues the melodic line with a piano (*p*) dynamic. The second staff (bass clef) continues the accompaniment, also marked piano (*p*). A double bar line is present after measure 48.

51

1
p *pp* *rall.*

2
p *pp*

Detailed description: This system covers measures 51 to 54. The first staff (treble clef) shows a dynamic shift from piano (*p*) to pianissimo (*pp*) and includes the instruction 'rall.' (rallentando). The second staff (bass clef) also shifts from piano (*p*) to pianissimo (*pp*). A double bar line is present after measure 52.

55

1
mp

2
mp *p* *pp* *morendo*

Detailed description: This system covers measures 55 to 58. The first staff (treble clef) is marked mezzo-piano (*mp*) and contains a sustained chord. The second staff (bass clef) features a melodic line with a dynamic range from mezzo-piano (*mp*) to pianissimo (*pp*), ending with the instruction 'morendo' (morendo). A double bar line is present after measure 56.