



Bernard Dewagtere

France, SIN LE NOBLE

6 duets for Edvard Munch (4. Woman in Three Stages)

About the artist

Doctor in musicology, conductor and composer.

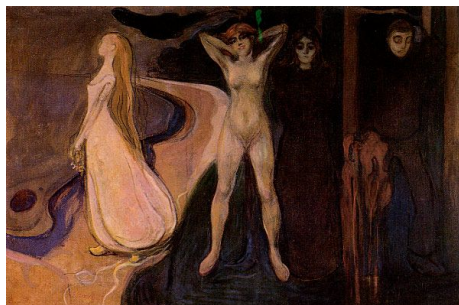
Compositions and arrangements from all eras, in all styles or musical genres and for any instrument or vocal training.

Qualification: PhD Musicology

Associate: SACEM - IPI code of the artist : 342990

Artist page : <https://www.free-scores.com/Download-PDF-Sheet-Music-bernard-dewagtere.htm>

About the piece



Title: 6 duets for Edvard Munch [4. Woman in Three Stages]
Composer: Dewagtere, Bernard
Copyright: Copyright © Dewagtere, Bernard
Instrumentation: 2 Bassoons (duet)
Style: Early 20th century
Comment: Woman in Three Stages, 1894 - Oil on canvas 164 x 250 cm

Bernard Dewagtere on [free-scores.com](https://www.free-scores.com)

LICENSE

This sheet music requires an authorization
- for public performances
- for use by teachers

Buy this license at :

<https://www.free-scores.com/licence-partition-uk.php?partition=41783>



- listen to the audio
- share your interpretation
- comment
- pay the licence
- contact the artist

Prohibited distribution on other website.

6 duets for Edvard Munch

4. Woman in Three Stages

Bernard Dewagtere

Allegretto

Bassoon 1

Bassoon 2

mf

mf

mf

1

2

sf

mp

p

sf

mp

p

11

1

2

f

f

mf

mp

16

1

2

mf

rit.

molto rit.

pp

6 duets for Edvard Munch

2
22 **Moderato**

1 *mf*

2 *mf* *mp*

Detailed description: This system covers measures 22 to 25. The first staff (labeled '1') begins with a dynamic marking of *mf*. The second staff (labeled '2') starts with an accent (<) and *mf*, then transitions to *mp* in measure 25. The music features a mix of eighth and sixteenth notes with various articulations and slurs.

26

1 *mf* *sf* *mp*

2 *mf* *mp* *sf* *mp*

Detailed description: This system covers measures 26 to 29. The first staff (labeled '1') has dynamics of *mf*, *sf*, and *mp*. The second staff (labeled '2') has dynamics of *mf*, *mp*, *sf*, and *mp*. The music continues with complex rhythmic patterns and slurs.

31

1 *p* *f* *tr*

2 *p* *f* *mf* *mp*

Detailed description: This system covers measures 31 to 36. The first staff (labeled '1') starts with *p*, moves to *f*, and includes trills (*tr*) in measures 34 and 35. The second staff (labeled '2') starts with *p*, moves to *f*, and then *mf* and *mp*. There is an *8va* marking above the first staff in measure 34.

37

1 *mp* *pp*

2 *pp*

loco *rit.* *molto rit*

Detailed description: This system covers measures 37 to 40. The first staff (labeled '1') has dynamics of *mp* and *pp*. The second staff (labeled '2') has a dynamic of *pp*. Performance directions include *loco*, *rit.*, and *molto rit*. The system ends with a key signature change to two sharps (F# and C#).

Grave

43

1 *p*

2 *p* *mp*

Detailed description: This system covers measures 43 to 46. The first staff (1) begins with a piano (*p*) dynamic and features a rhythmic pattern of eighth notes with stems pointing up. The second staff (2) starts with a piano (*p*) dynamic and has a more melodic line. A crescendo hairpin is shown between the staves, leading to a mezzo-piano (*mp*) dynamic at the end of the system.

47

1 *p*

2 *p*

Detailed description: This system covers measures 47 to 50. The first staff (1) continues with the eighth-note rhythmic pattern at a piano (*p*) dynamic. The second staff (2) has a melodic line that also remains at a piano (*p*) dynamic. A crescendo hairpin is present, and a fermata is placed over the final measure of the first staff.

51

1 *p* *pp* *rall.*

2 *p* *pp*

Detailed description: This system covers measures 51 to 54. The first staff (1) shows a dynamic shift from piano (*p*) to pianissimo (*pp*) and includes a *rall.* (rallentando) marking. The second staff (2) also shifts from *p* to *pp*. Both staves feature long, sweeping melodic lines with fermatas.

55

1 *mp*

2 *mp* *p* *pp* *morendo*

Detailed description: This system covers measures 55 to 58. The first staff (1) has a mezzo-piano (*mp*) dynamic and contains whole notes with fermatas. The second staff (2) starts at *mp*, then moves to piano (*p*) and finally pianissimo (*pp*) dynamics, ending with a *morendo* (morendo) marking. A large crescendo hairpin spans the bottom of the system.