



# Bernard Dewagtere

France, SIN LE NOBLE

## 6 duets for Edvard Munch (1. Jealousy)

### About the artist

Doctor in musicology, conductor and composer.

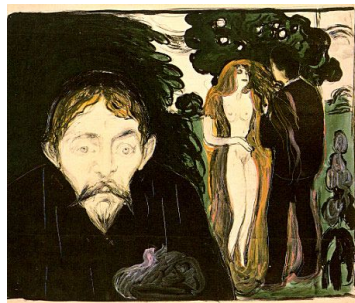
Compositions and arrangements from all eras, in all styles or musical genres and for any instrument or vocal training.

**Qualification:** PhD Musicology

**Associate:** SACEM - IPI code of the artist : 342990

**Artist page :** <https://www.free-scores.com/Download-PDF-Sheet-Music-bernard-dewagtere.htm>

### About the piece



**Title:** 6 duets for Edvard Munch [1. Jealousy]

**Composer:** Dewagtere, Bernard

**Copyright:** Copyright © Dewagtere, Bernard

**Instrumentation:** Vibraphone or Marimba or Xylophone

**Style:** Early 20th century

**Comment:** Jealousy, 1896 ? Lithograph 46.5 x 56.5 cm

### Bernard Dewagtere on [free-scores.com](https://www.free-scores.com)

#### LICENSE

This sheet music requires an authorization  
- for public performances  
- for use by teachers

**Buy this license at :**

<https://www.free-scores.com/licence-partition-uk.php?partition=41604>



- listen to the audio
- share your interpretation
- comment
- pay the licence
- contact the artist

Prohibited distribution on other website.

# 6 duets for Edvard Munch

## 1. Jealousy

Bernard Dewagtere

Giusto tempo ♩ = 160

Mallet 1

Mallet 2

*f* *mf* *mf* *f* *mf*

1

2

*mp* *p* *p* *mp*

1

2

*p* *mp* *p* *mp*

1

2

*f* *f* *subito p* *subito p*

1

2

*pp* *pp* *pp* *pp*

©2012Dewagtere

Duo No1

2  
22

1  
mf

2  
mf

26

Allargando

1  
mf

2  
mf

30

Largo

1  
p mp pp

2  
p pp

34

1  
p

2  
p

38

1  
pp

2  
pp

Duo No1

42

1 *mp* *pp*

2 *mp* *pp*

Measures 42-45. Part 1: *mp* (42-44), *pp* (45). Part 2: *mp* (42-44), *pp* (45). Trills in Part 1 at measures 44 and 45. Triplet markings in Part 2 at measures 43-44.

46

1 *pp* *mf* **Tempo I**

2 *pp* *mf*

Measures 46-49. Part 1: *pp* (46-48), *mf* (49). Part 2: *pp* (46-48), *mf* (49). Triplet markings in Part 2 at measures 47-48. **Tempo I** marking at measure 49.

50

1 *f* *mf* *p* *mp*

2 *f* *mf* *mp*

Measures 50-53. Part 1: *f* (50), *mf* (51), *p* (52), *mp* (53). Part 2: *f* (50), *mf* (51), *mp* (52-53). Trills in Part 1 at measures 52 and 53.

54

1 *p* *p*

2 *p* *mp* *p*

Measures 54-57. Part 1: *p* (54-57). Part 2: *p* (54-55), *mp* (56), *p* (57). Trills in Part 1 at measures 55-57.

58

1 *mp*

2 *mp*

Measures 58-61. Part 1: *mp* (58-61). Part 2: *mp* (58-61). Trills in Part 1 at measures 59-61.

Duo No1

4/62

1 *f* *tr* *subito p*

2 *f* *tr* *subito p*

66

1 *pp*

2 *pp*

70

1 *mf*

2 *mf*

74

1 *mp*

2 *mp*

78

1 *sf sf sf f*

2 *sf sf sf f*