



# Bernard Dewagtere

France, SIN LE NOBLE

## Beau soir (Beautiful Evening) (Transcription pour flûte) Debussy, Claude

### About the artist

Doctor in musicology, conductor and composer.

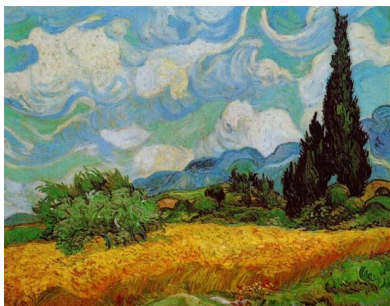
Compositions and arrangements from all eras, in all styles or musical genres and for any instrument or vocal training.

**Qualification:** PhD Musicology

**Associate:** SACEM - IPI code of the artist : 342990

**Artist page :** <https://www.free-scores.com/Download-PDF-Sheet-Music-bernard-dewagtere.htm>

### About the piece



**Title:** Beau soir (Beautiful Evening) [Transcription pour flûte]

**Composer:** Debussy, Claude

**Arranger:** Dewagtere, Bernard

**Copyright:** Copyright © Dewagtere, Bernard

**Instrumentation:** Flute and Piano

**Style:** Early 20th century

**Comment:** When the rivers are rosy in the setting sun, And a warm shiver runs over the wheat fields, Advice to be happy seems to rise up from things And climb toward the troubled heart. Advice to taste the charm of being in the world While one is young and the evening is beautiful, For we are going away, as this stream goes away: The stream to the sea, we to the grave.

### Bernard Dewagtere on [free-scores.com](https://www.free-scores.com)

#### LICENSE

This sheet music requires an authorization  
- for public performances  
- for use by teachers

Buy this license at :

<https://www.free-scores.com/licence-partition-uk.php?partition=33485>



- listen to the audio
- share your interpretation
- comment
- pay the licence
- contact the artist

Prohibited distribution on other website.

# Beau soir (Beautiful Evening)

Transcription pour Flute & piano

Claude Debussy (1883)  
Transc. : Bernard Dewagtere

Andante ma non troppo

The image displays a musical score for Flute and Piano. It is divided into three systems, each with a Flute (Fl.) staff and a Piano (Pno) grand staff. The key signature is three sharps (F#, C#, G#) and the time signature is 3/4. The tempo is marked 'Andante ma non troppo'. The score begins with a piano (pp) dynamic. The piano accompaniment features a repeating pattern of eighth-note triplets in both hands, often with a slur over the right-hand notes. The flute part starts with a whole rest in the first measure, then enters with a melodic line in the second system, marked with a piano (p) dynamic. The score includes various musical notations such as slurs, accents, and dynamic markings.

Beau soir (Beautiful Evening)

Fl. <sup>2</sup>/<sub>13</sub>

Pno <sup>13</sup>

Fl. <sup>18</sup>

Pno <sup>18</sup>

*p*

*poco rit.* *a tempo*

Fl. <sup>23</sup>

Pno <sup>23</sup>

*animato poco a poco cresc.* *f*

Beau soir (Beautiful Evening)

Fl. *dim.* *dim. molto* *p*

Pno *dim.* *dim. molto* *p*

Fl. *Plus lent*

Pno *più p* *pp* *Plus lent*

Fl. *pp*

Pno *morendo.*