



Bernard Dewagtere

France, SIN LE NOBLE

Sonate N°3 en La mineur Cimarosa, Domenico

About the artist

Doctor in musicology, conductor and composer.

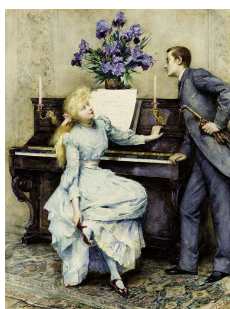
Compositions and arrangements from all eras, in all styles or musical genres and for any instrument or vocal training.

Qualification: PhD Musicology

Associate: SACEM - IPI code of the artist : 342990

Artist page : <https://www.free-scores.com/Download-PDF-Sheet-Music-bernard-dewagtere.htm>

About the piece



Title: Sonate N°3 en La mineur
Composer: Cimarosa, Domenico
Arranger: Dewagtere, Bernard
Copyright: Copyright © Bernard Dewagtere
Publisher: Dewagtere, Bernard
Instrumentation: Organ solo
Style: Classical

Bernard Dewagtere on [free-scores.com](https://www.free-scores.com)

LICENSE

This sheet music requires an authorization
- for public performances
- for use by teachers

Buy this license at :

<https://www.free-scores.com//license?p=arwKUFkYkG>



- listen to the audio
- share your interpretation
- comment
- pay the licence
- contact the artist

Prohibited distribution on other website.

Sonate N°3 en La mineur

Domenico Cimarosa (1749-1801)

Transc. : Bernard Dewagtere

Andantino grazioso

Orgue

mp

5

9

13

f

Sonate N°3 en La mineur

2
17

p *f* *mp*

This system contains measures 17, 18, 19, and 20. Measure 17 starts with a piano (*p*) dynamic and features a sixteenth-note arpeggiated pattern in the right hand. Measure 18 has a forte (*f*) dynamic and continues the arpeggiated pattern. Measure 19 is a whole rest. Measure 20 has a mezzo-piano (*mp*) dynamic and features a half-note chord in the right hand.

21

This system contains measures 21, 22, 23, and 24. Measure 21 has a mezzo-piano (*mp*) dynamic and features a sixteenth-note arpeggiated pattern. Measure 22 has a mezzo-piano (*mp*) dynamic and continues the arpeggiated pattern. Measure 23 has a forte (*f*) dynamic and continues the arpeggiated pattern. Measure 24 has a mezzo-piano (*mp*) dynamic and features a sixteenth-note arpeggiated pattern.

25

p *f*

This system contains measures 25, 26, 27, and 28. Measure 25 has a piano (*p*) dynamic and features a sixteenth-note arpeggiated pattern. Measure 26 has a forte (*f*) dynamic and continues the arpeggiated pattern. Measure 27 has a forte (*f*) dynamic and continues the arpeggiated pattern. Measure 28 has a piano (*p*) dynamic and features a sixteenth-note arpeggiated pattern.

29

This system contains measures 29, 30, 31, and 32. Measure 29 has a piano (*p*) dynamic and features a sixteenth-note arpeggiated pattern. Measure 30 has a piano (*p*) dynamic and continues the arpeggiated pattern. Measure 31 has a piano (*p*) dynamic and continues the arpeggiated pattern. Measure 32 has a piano (*p*) dynamic and features a sixteenth-note arpeggiated pattern.

33

p

This system contains measures 33, 34, 35, and 36. Measure 33 has a piano (*p*) dynamic and features a sixteenth-note arpeggiated pattern. Measure 34 has a piano (*p*) dynamic and continues the arpeggiated pattern. Measure 35 has a piano (*p*) dynamic and continues the arpeggiated pattern. Measure 36 has a piano (*p*) dynamic and features a half-note chord in the right hand.