



Christian Faivre

Arranger, Composer

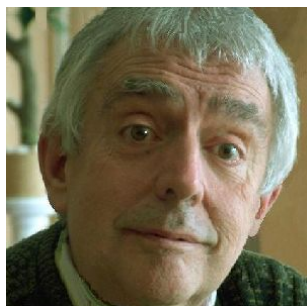
France, Strasbourg

About the artist

All styles composer

Personal web: http://faivre_christian.myriad-users.com/

About the piece



Title: Autumn walking
Composer: Christian Faivre
Licence: Copyright © Faivre Christian
Instrumentation: Piano and Violoncello
Style: Classical

Christian Faivre on [free-scores.com](http://www.free-scores.com)

<http://www.free-scores.com/Download-PDF-Sheet-Music-christian-faivre.htm>

- Contact the artist
- Write feedback comments
- Share your MP3 recording
- Web page and online audio access with QR Code :



This work is not Public Domain. You must contact the artist for any use outside the private area.

Promenade d'automne

Andante moderato en sol majeur

Christian Faivre

1 ♩ = 120 2 3

Cello

Piano

4 *f* 5 6

Cello

Piano

7 8 9

Cello

Piano

10 11 **1** 12

Cello

Piano

13 14 15

Cello

f

Piano

16 17 18

Cello

Piano

19 20 21

Cello

Piano

22

23

24

Cello

Piano

Detailed description: This system contains measures 22, 23, and 24. The Cello part (bass clef, one sharp) has a whole rest in measure 22, followed by a dotted quarter note G2 in measure 23, and a half note G2 in measure 24. The Piano part (treble and bass clefs, one sharp) has a whole rest in the bass clef. The treble clef has a quarter note G4 in measure 22, a dotted quarter note G4 in measure 23, and a half note G4 in measure 24. In measure 23, there is a complex chordal texture with multiple notes in the treble clef.

25

26

27 **1**

Cello

Piano

Detailed description: This system contains measures 25, 26, and 27. The Cello part (bass clef, one sharp) has a half note G2 in measure 25, a quarter note G2 in measure 26, and a half note G2 in measure 27. The Piano part (treble and bass clefs, one sharp) has a whole rest in the bass clef. The treble clef has a quarter note G4 in measure 25, a dotted quarter note G4 in measure 26, and a half note G4 in measure 27. In measure 27, there is a complex chordal texture with multiple notes in the treble clef.

28

29

30

Cello

Piano

Detailed description: This system contains measures 28, 29, and 30. The Cello part (bass clef, one sharp) has a half note G2 in measure 28, a quarter note G2 in measure 29, and a half note G2 in measure 30. The Piano part (treble and bass clefs, one sharp) has a whole rest in the bass clef. The treble clef has a quarter note G4 in measure 28, a dotted quarter note G4 in measure 29, and a half note G4 in measure 30. In measure 30, there is a complex chordal texture with multiple notes in the treble clef.

31

32

33

Cello

Piano

Detailed description: This system contains measures 31, 32, and 33. The Cello part (bass clef, one sharp) has a half note G2 in measure 31, a quarter note G2 in measure 32, and a half note G2 in measure 33. The Piano part (treble and bass clefs, one sharp) has a whole rest in the bass clef. The treble clef has a quarter note G4 in measure 31, a dotted quarter note G4 in measure 32, and a half note G4 in measure 33. In measure 33, there is a complex chordal texture with multiple notes in the treble clef.

34

35

36

Cello

Piano

37

38

39

Cello

Piano

40

41

42

Cello

Piano

43

Ralento

44

45

Cello

Piano

46 *Ritenuato* 47 48

Cello

Piano

49 *Molto espressivo >* 50 51

Cello

Piano

52 53 54

Cello

Piano

55 *Dal Segno* $\text{S}^{\text{C}} : 2$ 56 1^{C} 57

Cello

Piano

58

59

60

Cello

Piano

61

62

63

Cello

Piano

64

65

66

Cello

Piano

67

68

69

Cello

Piano

70 71 72

Cello

Piano

73 74 75

Cello

Piano

76 77 78

Cello

Piano

79 80 81 *Accelerando* > 85

Cello

Piano

82 83 84

Cello

Piano

85 86 87

Cello

Piano

88 89 90

Cello

Piano

91 92 93

Cello

Piano

94 Ralento dal fine 95 *Fine* 96

Cello

Piano

Légèrement arpégé

97 98 99

Cello

Piano

100 101 102

Cello

Piano

103 104 105

Cello

Piano