



# Christian Faivre

Arranger, Composer

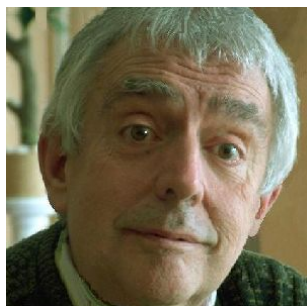
France, Strasbourg

## About the artist

All styles composer

**Personal web:** [http://faivre\\_christian.myriad-users.com/](http://faivre_christian.myriad-users.com/)

## About the piece



**Title:** Greetings out of mountains  
**Composer:** Christian Faivre  
**Licence:** Copyright © Faivre Christian  
**Instrumentation:** Accordion  
**Style:** Traditional

## Christian Faivre on [free-scores.com](http://www.free-scores.com)

<http://www.free-scores.com/Download-PDF-Sheet-Music-christian-faivre.htm>

- Contact the artist
- Write feedback comments
- Share your MP3 recording
- Web page and online audio access with QR Code :



This work is not Public Domain. You must contact the artist for any use outside the private area.

# Grüße aus den Bergen

Variations originales sur des thèmes

Allegro molto giocoso

folkloriques de la province tyrolienne

Christian Faivre

1  $\text{♩} = 120$

Cithare

Accordéon 1

Accordéon 2

2 3

4 5 6

Cithare

Accordéon 1

Accordéon 2

7 8 9

Cithare

Accordéon 1

Accordéon 2

Detailed description: This system covers measures 7, 8, and 9. The Cithare part consists of rests in all three measures. Accordéon 1 (treble and bass clefs) plays a sequence of chords and eighth notes. Accordéon 2 (treble and bass clefs) plays a similar sequence with some grace notes.

10 11 12

Cithare

Accordéon 1

Accordéon 2

Detailed description: This system covers measures 10, 11, and 12. The Cithare part has notes in measures 11 and 12. Accordéon 1 and 2 continue their patterns from the previous system, with some changes in the final measure.

13 14 15

Cithare

Accordéon 1

Accordéon 2

Detailed description: This system covers measures 13, 14, and 15. The guitar (Cithare) and the first accordion (Accordéon 1) play a melody in the treble clef, starting with a repeat sign. The first accordion also plays a bass line in the bass clef. The second accordion (Accordéon 2) is silent, indicated by a whole rest in both staves.

16 17 18

Cithare

Accordéon 1

Accordéon 2

Detailed description: This system covers measures 16, 17, and 18. The guitar (Cithare) and the first accordion (Accordéon 1) play a melody in the treble clef, with a repeat sign at the start of measure 17. The first accordion also plays a bass line in the bass clef. The second accordion (Accordéon 2) plays a bass line in the bass clef, with a repeat sign at the start of measure 17.

19 20 21

Cithare

Accordéon 1

Accordéon 2

22 23 24

Cithare

Accordéon 1

Accordéon 2

25 26 27

Cithare

Accordéon 1

Accordéon 2

28 29 30

Cithare

Accordéon 1

Accordéon 2

31 32 33

Cithare

Accordéon 1

Accordéon 2

34 35 36

Cors nat. 1 & 2

Accordéon 1

Accordéon 2

37 38 39

Cors nat. 1 & 2

Accordéon 1

Accordéon 2

40 41 42

Cors nat. 1 & 2

Accordéon 1

Accordéon 2



43 44 45

Cors nat. 1 & 2

Accordéon 1

Accordéon 2

46 47 48

Cors nat. 1 & 2

Accordéon 1

Accordéon 2

49 50 51

Cors nat. 1 & 2

Accordéon 1

Accordéon 2

52 53 54

Cithare

Accordéon 1

Accordéon 2

55 56 57

Cithare

Accordéon 1

Accordéon 2

58 59 60

Cithare

Accordéon 1

Accordéon 2

61 62 63

Cithare

Accordéon 1

Accordéon 2

64 65 66

Cithare

Accordéon 1

Accordéon 2

67 68 69

Cithare

Accordéon 1

Accordéon 2

70 71 72

Cithare

Accordéon 1

Accordéon 2

73 74 75

Cithare

Accordéon 1

Accordéon 2

76 77 78

Cithare

Accordéon 1

Accordéon 2

79 80 81

Cithare

Accordéon 1

Accordéon 2

Detailed description: This system covers measures 79, 80, and 81. The guitar part (Cithare) is in treble clef with a key signature of one flat. It has a whole rest in measure 79, then begins a melodic line in measure 80: G4 (quarter), A4 (quarter), B4 (quarter), A4-G4 (beamed eighth notes), F4 (quarter), E4 (quarter). In measure 81, it continues: D4 (quarter), C4 (quarter), B3 (quarter), A3 (quarter). The first accordion (Accordéon 1) has a treble and bass staff. The treble staff plays chords and single notes, while the bass staff plays a steady eighth-note bass line. The second accordion (Accordéon 2) has a treble staff with chords and eighth notes, and a bass staff with whole rests.

82 Rall. dal fine 83 84

Cithare

Accordéon 1

Accordéon 2

Detailed description: This system covers measures 82, 83, and 84. The guitar part (Cithare) has a melodic line starting at measure 82: G4 (quarter), A4 (quarter), B4 (quarter), A4-G4 (beamed eighth notes), F4 (quarter), E4 (quarter). In measure 83, it continues: D4 (quarter), C4 (quarter), B3 (quarter), A3 (quarter). In measure 84, it continues: G4 (quarter), F4 (quarter), E4 (quarter), D4 (quarter). The tempo marking 'Rall. dal fine' is placed above measure 82. The first accordion (Accordéon 1) has a treble and bass staff. The treble staff plays chords and single notes, while the bass staff plays a steady eighth-note bass line. The second accordion (Accordéon 2) has a treble staff with chords and eighth notes, and a bass staff with chords and eighth notes.