



Faivre Christian

France, BISCHHEIM

Good Hope

About the artist

All styles composer

Artist page : <https://www.free-scores.com/Download-PDF-Sheet-Music-christian-faivre.htm>

About the piece



Title: Good Hope
Composer: Christian, Faivre
Copyright: Copyright © Faivre Christian
Instrumentation: Orchestra
Style: Classical

Faivre Christian on [free-scores.com](https://www.free-scores.com)



This work is not Public Domain. You must contact the artist for any use outside the private area.



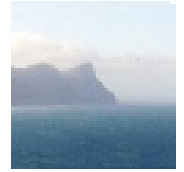
- listen to the audio
- share your interpretation
- comment
- contact the artist



Bonne Espérance

1487

Poème symphonique



1 Andante ♩ = 120

2

3

4

Christian Faivre

Flûtes 1-2

Hautbois 1-2

Clarinettes 1-2

Bassons 1-2

Trompettes 1-2

Cors 1-2

Trombones 1-2

Timbales 1-2

Violons 1-2

Alto

Violoncelles

Contrebasses

5 6 7 8

Flûtes 1-2

Hautbois 1-2

Clarinettes 1-2

Bassons 1-2

5 6 7 8

Trompettes 1-2

Cors 1-2

Trombones 1-2

5 6 7 8

Timbales 1-2

5 6 7 8

Violons 1-2

Alto

Violoncelles

Contrebasses

	9	10	11	12
Flûtes 1-2	■	■	■	■
Hautbois 1-2	■	■	■	■
Clarinettes 1-2	■	■	■	■
Bassons 1-2	■	■	■	■
Trompettes 1-2	■	■	■	■
Cors 1-2	■	■	■	■
Trombones 1-2	■	■	■	■
Timbales 1-2	■	■	■	■
Violons 1-2	■	○	○	■
Alto	■	■	○	■
Violoncelles	○	○	○	○
Contrebasses	○	○	○	○

	13	14	15	16
Flûtes 1-2	■	■	■	■
Hautbois 1-2	■	■	■	■
Clarinettes 1-2	■	■	■	■
Bassons 1-2	■	■	■	■
Trompettes 1-2	■	■	■	■
Cors 1-2	■	■	■	■
Trombones 1-2	■	■	■	■
Timbales 1-2	■	■	■	■
Violons 1-2	○	■	○	○
Alto	○	■	○	○
Violoncelles	■	○	○	○
Contrebasses	○	○	○	○

17 18 19 20

1. Flûtes 1-2

Hautbois 1-2

Clarinettes 1-2

Bassons 1-2

17 18 19 20

Trompettes 1-2

Cors 1-2

Trombones 1-2

17 18 19 20

Timbales 1-2

17 18 19 20

Violons 1-2

Alto

Violoncelles

Contrebasses

21 22 23 24

Flûtes 1-2

Hautbois 1-2

Clarinettes 1-2

Bassons 1-2

21 22 23 24

Trompettes 1-2

Cors 1-2

Trombones 1-2

21 22 23 24

Timbales 1-2

21 22 23 24

Violons 1-2

Alto

Violoncelles

Contrebasses

25 26 27 28

Flûtes 1-2

Hautbois 1-2

Clarinettes 1-2

Bassons 1-2

25 26 27 28

Trompettes 1-2

Cors 1-2

Trombones 1-2

25 26 27 28

Timbales 1-2

25 26 27 28

Violons 1-2

Alto

Violoncelles

Contrebasses

Detailed description: This is a page of a musical score for measures 25 through 28. The score is organized into four systems. The first system includes Flûtes 1-2, Hautbois 1-2, Clarinettes 1-2, and Bassons 1-2. The second system includes Trompettes 1-2, Cors 1-2, and Trombones 1-2. The third system includes Timbales 1-2. The fourth system includes Violons 1-2 (two staves), Alto (one staff), Violoncelles (one staff), and Contrebasses (one staff). Each instrument part shows a whole rest in measures 25 and 26, followed by a repeat sign. In measure 27, there is a double bar line. In measure 28, the woodwinds and brass parts have whole rests, while the strings (Violons, Alto, Violoncelles, and Contrebasses) play a sustained chord of two notes (G and C) in each hand, indicated by a brace and a fermata.

	29	30	31	32
Flûtes 1-2	■	■	■	■
Hautbois 1-2	■	■	■	■
Clarinettes 1-2	■	■	■	■
Bassons 1-2	■	■	■	■
Trompettes 1-2	■	■	■	■
Cors 1-2	■	■	■	■
Trombones 1-2	■	■	■	■
Timbales 1-2	■	■	■	■
Violons 1-2	○	○	○	○
Alto	■	■	■	■
Violoncelles	○	○	○	○
Contrebasses	■	■	■	■

33 Développement 34 35 36

Flûtes 1-2

Hautbois 1-2

Clarinettes 1-2

Bassons 1-2

33 34 35 36

Trompettes 1-2

Cors 1-2

Trombones 1-2

33 34 35 36

Timbales 1-2

33 34 35 36

Violons 1-2

Alto

Violoncelles

Contrebasses

41 42 43 44

Flûtes 1-2

Hautbois 1-2

Clarinettes 1-2

Bassons 1-2

41 42 43 44

Trompettes 1-2

Cors 1-2

Trombones 1-2

41 42 43 44

43 *tr*

Timbales 1-2

41 42 43 44

Violons 1-2

Alto

Violoncelles

Contrebasses

Detailed description of the musical score: The score is arranged in four systems. The first system includes Flutes 1-2, Oboes 1-2, Clarinets 1-2, and Bassoons 1-2. The second system includes Trumpets 1-2, Horns 1-2, and Trombones 1-2. The third system includes Timpani 1-2. The fourth system includes Violins 1-2, Alto, Violoncelles, and Contrabasses. Measure 41 shows a half note in the Flutes and a quarter note in the Trumpets. Measure 42 shows a half note in the Flutes and a quarter note in the Trumpets. Measure 43 shows a half note in the Flutes, a quarter note in the Trumpets, and a triplet of eighth notes in the Timpani. Measure 44 shows a half note in the Flutes and a quarter note in the Trumpets. The string parts (Violins, Alto, Violoncelles, and Contrabasses) play a steady accompaniment of half notes.

	49	50	51	52
Flûtes 1-2				
Hautbois 1-2				
Clarinettes 1-2				
Bassons 1-2				
Trompettes 1-2				
Cors 1-2				
Trombones 1-2				
Timbales 1-2				
Violons 1-2				
Alto				
Violoncelles				
Contrebasses				

	53	54	55	56
Flûtes 1-2	■	■	■	■
Hautbois 1-2	■	■	■	■
Clarinettes 1-2	■	■	■	■
Bassons 1-2	■	■	■	■
Trompettes 1-2	○	■	■	■
Cors 1-2	■	■	■	■
Trombones 1-2	■	■	■	■
Timbales 1-2	■	■	■	■
Violons 1-2	○	○	○	○
Alto	○	○	○	○
Violoncelles	■	○	○	○
Contrebasses	■	○	○	○

57 58 59 60

Flûtes 1-2

Hautbois 1-2

Clarinettes 1-2

Bassons 1-2

57 58 59 60

Trompettes 1-2

Cors 1-2

Trombones 1-2

57 58 59 60

Timbales 1-2

57 58 59 60

Violons 1-2

Alto

Violoncelles

Contrebasses

61 62 63 64

Flûtes 1-2

Hautbois 1-2

Clarinettes 1-2

Bassons 1-2

61 62 63 64

Trompettes 1-2

Cors 1-2

Trombones 1-2

61 62 *tr* 63 64

Timbales 1-2

61 62 63 64

Violons 1-2

Alto

Violoncelles

Contrebasses

Detailed description of the musical score: The score is arranged in systems. The first system includes Flutes 1-2, Oboes 1-2, Clarinets 1-2, and Bassoons 1-2. The second system includes Trumpets 1-2, Horns 1-2, and Trombones 1-2. The third system includes Timpani 1-2, which has a trill (tr) in measure 62. The fourth system includes Violins 1-2, Alto, Cellos, and Double Basses. Measures 61 and 64 contain whole rests for most instruments. Measures 62 and 63 contain sustained notes for the strings and a trill for the timpani.

	65	66	67	68
Flûtes 1-2				
Hautbois 1-2				
Clarinettes 1-2				
Bassons 1-2				
	65	66	67	68
Trompettes 1-2				
Cors 1-2				
Trombones 1-2				
	65	66	67	68
Timbales 1-2				
	65	66	67	68
Violons 1-2				
Alto				
Violoncelles				
Contrebasses				

	69	70	71	72
Flûtes 1-2	■	■	■	■
Hautbois 1-2	■	■	■	■
Clarinettes 1-2	■	■	■	■
Bassons 1-2	■	■	■	■
Trompettes 1-2	■	■	■	■
Cors 1-2	■	■	■	■
Trombones 1-2	■	■	■	■
Timbales 1-2	■	■	■	■
Violons 1-2	■	○	○	■
Alto	■	■	○	■
Violoncelles	○	○	○	○
Contrebasses	○	○	○	○

	73	74	75	76
Flûtes 1-2	■	■	■	■
Hautbois 1-2	■	■	■	■
Clarinettes 1-2	■	■	■	■
Bassons 1-2	■	■	■	■
Trompettes 1-2	■	■	■	■
Cors 1-2	■	■	■	■
Trombones 1-2	■	■	■	■
Timbales 1-2	■	■	■	■
Violons 1-2	○	■	○	○
Alto	○	■	○	○
Violoncelles	■	○	○	○
Contrebasses	○	○	○	○

77 78 79 80

Flûtes 1-2

Hautbois 1-2

Clarinettes 1-2

Bassons 1-2

77 78 79 80

Trompettes 1-2

Cors 1-2

Trombones 1-2

77 78 79 80

Timbales 1-2

77 78 79 80

Violons 1-2

Alto

Violoncelles

Contrebasses

	81	82	83	84
Flûtes 1-2	■	■	■	■
Hautbois 1-2	■	■	■	■
Clarinettes 1-2	■	■	■	■
Bassons 1-2	■	■	■	■
Trompettes 1-2	■	■	■	■
Cors 1-2	■	■	■	■
Trombones 1-2	■	■	■	■
Timbales 1-2	■	■	■	■
Violons 1-2	○	○	○	○
Alto	■	■	■	■
Violoncelles	■	■	○	○
Contrebasses	■	■	○	■

85 86 87 88

Flûtes 1-2

Hautbois 1-2

Clarinettes 1-2

Bassons 1-2

85 86 87 88

Trompettes 1-2

Cors 1-2

Trombones 1-2

85 86 87 88

Timbales 1-2

85 86 87 88

Violons 1-2

Alto

Violoncelles

Contrebasses

The image shows a page of a musical score for measures 85 through 88. The score is organized into four systems. The first system includes Flûtes 1-2, Hautbois 1-2, Clarinettes 1-2, and Bassons 1-2. The second system includes Trompettes 1-2, Cors 1-2, and Trombones 1-2. The third system includes Timbales 1-2. The fourth system includes Violons 1-2, Alto, Violoncelles, and Contrebasses. Each instrument part is represented by a staff with a clef and a key signature. The woodwind and brass parts have a flat key signature and a common time signature. The string parts have a flat key signature and a common time signature. The percussion part (Timbales) has a common time signature. The score is mostly empty, with only a few notes and rests visible. The measures are numbered 85, 86, 87, and 88 at the top of each system.

	89	90	91	92
Flûtes 1-2	■	■	■	■
Hautbois 1-2	■	■	■	■
Clarinettes 1-2	■	■	■	■
Bassons 1-2	■	■	■	■
Trompettes 1-2	■	■	■	■
Cors 1-2	■	■	■	■
Trombones 1-2	■	■	■	■
Timbales 1-2	■	■	■	■
Violons 1-2	○	○	○	○
Alto	■	■	■	○
Violoncelles	○	○	○	○
Contrebasses	■	■	■	■

93 Coda ♩ = 80 94 95 96

Flûtes 1-2

Hautbois 1-2

Clarinettes 1-2

Bassons 1-2

Trompettes 1-2

Cors 1-2

Trombones 1-2

93 94 95 96

Timbales 1-2

93 94 95 96

Violons 1-2

Alto *Pizz.*

Violoncelles

Contrebasses