



# Bernard Dewagtere

France, SIN LE NOBLE

## Prelude No 4 in E minor (op. 28) - Largo (Suffocation) Chopin, Frédéric

### About the artist

Doctor in musicology, conductor and composer.

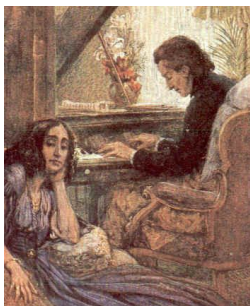
Compositions and arrangements from all eras, in all styles or musical genres and for any instrument or vocal training.

**Qualification:** PhD Musicology

**Associate:** SACEM - IPI code of the artist : 342990

**Artist page :** <https://www.free-scores.com/Download-PDF-Sheet-Music-bernard-dewagtere.htm>

### About the piece



**Title:** Prelude No 4 in E minor (op. 28) - Largo [Suffocation]

**Composer:** Chopin, Frédéric

**Arranger:** Dewagtere, Bernard

**Copyright:** Copyright © Dewagtere, Bernard

**Instrumentation:** Accordeon, piano or organ or guitar

**Style:** Romantic

**Comment:** Chopin wrote the Op. 28 preludes between 1835 and 1839, partly at Valldemossa, Majorca, where the composer spent the winter of 1838-39 and where he had fled with George Sand and her children to escape the damp Paris weather. Prelude No. 4 "Suffocation" is one of the most famous pieces Chopin wrote. It was played at his funeral, with a slow melody in the right hand and repeated block chords in the left hand (Source : Wikipedia)

### Bernard Dewagtere on [free-scores.com](https://www.free-scores.com)

#### LICENSE

This sheet music requires an authorization  
- for public performances  
- for use by teachers

**Buy this license at :**

<https://www.free-scores.com/licence-partition-uk.php?partition=40251>



- listen to the audio
- share your interpretation
- comment
- pay the licence
- contact the artist

Prohibited distribution on other website.

# Prelude No 4 in E minor (op. 28) - Largo

## Suffocation

F. Chopin (1839)

Transc. : Bernard Dewagtere

Largo

Accordeon

*mf* *legato* *espress.*

E m/G A m/F# F#dim

Piano

*mp* *legato*

3

A b m/F D m/F E7/F E7 E m7 A7/E C/E F#dim/E

Pno

6

D#dim D m7 B dim/D

Pno

©2009Dewagtere

9

CM7 A m/C C 3fr. A m7/B B7 A m7/B B7 A m7/B

Pno

12

B7 E m/G A m/F# A b m/F 4fr.

Pno

15

D m/F E7 A 7/E A#m/C# A m/C B 9 B/G E m/G 7fr.

Pno

*f*

*f*

Reo. \*

18

*mf*

A m/F# B A m/C B A m/C E m/B B B 7

Pno

*mp*

21

*dim.*

C/E 3fr. E dim 2fr. A m7/E F#dim/B 4fr. E/B 7fr. E m/B E dim/B<sup>b</sup> 2fr.

Pno

*dim.*

24

*p* *smorz.*

E m/B B E m

Pno

*pp* *smorz.*