



Bernard Dewagtere

France, SIN LE NOBLE

Prelude No 4 in E minor (op. 28) - Largo (Suffocation) Chopin, Frédéric

About the artist

Doctor in musicology, conductor and composer.

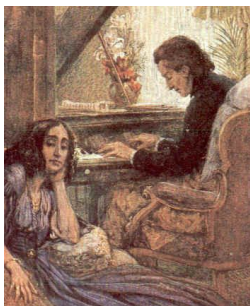
Compositions and arrangements from all eras, in all styles or musical genres and for any instrument or vocal training.

Qualification: PhD Musicology

Associate: SACEM - IPI code of the artist : 342990

Artist page : <https://www.free-scores.com/Download-PDF-Sheet-Music-bernard-dewagtere.htm>

About the piece



Title: Prelude No 4 in E minor (op. 28) - Largo [Suffocation]

Composer: Chopin, Frédéric

Arranger: Dewagtere, Bernard

Copyright: Copyright © Dewagtere, Bernard

Instrumentation: Violin solo

Style: Romantic

Comment: Chopin wrote the Op. 28 preludes between 1835 and 1839, partly at Valldemossa, Majorca, where the composer spent the winter of 1838-39 and where he had fled with George Sand and her children to escape the damp Paris weather. Prelude No. 4 "Suffocation" is one of the most famous pieces Chopin wrote. It was played at his funeral, with a slow melody in the right hand and repeated block chords in the left hand (Source : Wikipedia)

Bernard Dewagtere on [free-scores.com](https://www.free-scores.com)

LICENSE

This sheet music requires an authorization
- for public performances
- for use by teachers

Buy this license at :

<https://www.free-scores.com/licence-partition-uk.php?partition=40198>



- listen to the audio
- share your interpretation
- comment
- pay the licence
- contact the artist

Prohibited distribution on other website.

Prelude No 4 in E minor (op. 28) - Largo

Suffocation

F. Chopin (1839)

Transc. : Bernard Dewagtere

Largo

Violin

Measures 1-3 of the violin part. Measure 1 starts with a half note G4, followed by a quarter note A4, and a quarter note B4. Measure 2 contains a half note C5, and measure 3 contains a half note D5. The piece is in E minor (one sharp) and common time. Performance markings include *mf* (mezzo-forte) and *espress.* (espressivo). The word *legato* is written above the staff.

Measures 4-7. Measure 4: half note E5. Measure 5: quarter note D5, quarter note C5. Measure 6: quarter note B4, quarter note A4. Measure 7: quarter note G4, quarter note F4.

Measures 8-11. Measure 8: quarter note E5, quarter note D5. Measure 9: quarter note C5, quarter note B4. Measure 10: eighth notes A4, G4, F4, E4. Measure 11: quarter note D4.

Measures 12-15. Measure 12: quarter note C4, quarter note B3, quarter note A3, quarter note G3. Measure 13: quarter note F3, quarter note E3, quarter note D3. Measure 14: quarter note C3, quarter note B2, quarter note A2. Measure 15: quarter note G2, quarter note F2.

Measures 16-19. Measure 16: quarter note E4, quarter note D4, quarter note C4, quarter note B3. Measure 17: quarter note A3, quarter note G3, quarter note F3, quarter note E3. Measure 18: quarter note D3, quarter note C3, quarter note B2, quarter note A2. Measure 19: quarter note G2, quarter note F2, quarter note E2. Performance markings include *f* (forte), *dim.* (diminuendo), and *mf* (mezzo-forte).

Measures 20-22. Measure 20: quarter note D2, quarter note C2, quarter note B1. Measure 21: quarter note A1, quarter note G1, quarter note F1. Measure 22: quarter note E1, quarter note D1.

Measures 23-25. Measure 23: quarter note C1, quarter note B0. Measure 24: quarter note A0, quarter note G0, quarter note F0. Measure 25: quarter note E0, quarter note D0. Performance markings include *p* (piano) and *smorz.* (smorzando).