



Blanche de Brion

Composer

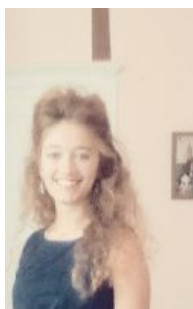
France

About the artist

Etudiante en lettres classiques je suis au conservatoire du 7ème arrondissement de Paris, Erick Satie, en chant lyrique. j'ai commencé le piano à 7ans puis j'ai bifurqué vers le clavecin et l'orgue. Mon époque de prédilection est l'époque baroque bien que j'apprécie aussi d'autres pièces de d'autres époques plus modernes.

Artist page : <http://www.free-scores.com/Download-PDF-Sheet-Music-hlisabette.htm>

About the piece



Title: valse tricastine
Composer: de Brion, Blanche
Copyright: Copyright © Blanche de Brion
Publisher: de Brion, Blanche
Instrumentation: Piano solo
Style: Classical

Blanche de Brion on [free-scores.com](https://www.free-scores.com)



- listen to the audio
- share your interpretation
- comment
- contact the artist

Valse tricastine

Blanche de Brion

Andante

Measures 1-9 of the piece. The tempo is marked 'Andante'. The music is in 3/4 time. The first staff (treble clef) begins with a piano (*p*) dynamic. The second staff (bass clef) provides a harmonic accompaniment. Trill ornaments are indicated above the notes in measures 4, 5, 6, and 8.

Measures 10-19. The tempo remains 'Andante'. The first staff (treble clef) features a forte (*f*) dynamic starting in measure 10. The second staff (bass clef) continues the accompaniment. Trill ornaments are present above notes in measures 11, 12, 13, 14, 15, 16, and 17.

Measures 20-28. The tempo is 'Andante'. The first staff (treble clef) starts with a piano (*p*) dynamic in measure 20 and ends with a forte (*f*) dynamic in measure 28. The second staff (bass clef) provides accompaniment. Trill ornaments are placed above notes in measures 21, 23, and 25.

Measures 29-36. The tempo is 'Andante'. The first staff (treble clef) features trill ornaments above notes in measures 30, 32, and 34. The second staff (bass clef) continues the accompaniment. The tempo changes to 'Moderato' at the beginning of measure 37.

Measures 37-44. The tempo is 'Allegretto'. The first staff (treble clef) begins with a mezzo-forte (*mf*) dynamic and contains six triplet markings over eighth notes. The second staff (bass clef) provides accompaniment.

41

mf *p*

46

Andante

cresc.-----

54

mf

63

Moderato

mf

67

mp

72

mf

