



Bernard Dewagtere

France, SIN LE NOBLE

Menuet from "String quintet in E" (G.275 ; Op.11 No.5) Boccherini, Luigi

About the artist

Doctor in musicology, conductor and composer.

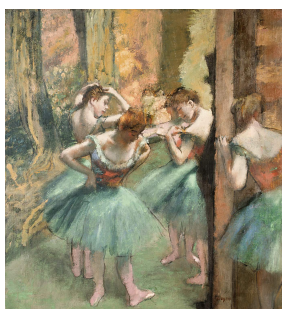
Compositions and arrangements from all eras, in all styles or musical genres and for any instrument or vocal training.

Qualification: PhD Musicology

Associate: SACEM - IPI code of the artist : 342990

Artist page : <https://www.free-scores.com/Download-PDF-Sheet-Music-bernard-dewagtere.htm>

About the piece



Title: Menuet from "String quintet in E" [G.275 ; Op.11 No.5]

Composer: Boccherini, Luigi

Arranger: Dewagtere, Bernard

Copyright: Copyright © Bernard Dewagtere

Publisher: Dewagtere, Bernard

Instrumentation: Trumpet (Ut), piano or organ

Style: Classical

Bernard Dewagtere on [free-scores.com](https://www.free-scores.com)

LICENSE

This sheet music requires an authorization
- for public performances
- for use by teachers

Buy this license at :

<https://www.free-scores.com//license?p=a7geX4zEOT>



- listen to the audio
- share your interpretation
- comment
- pay the licence
- contact the artist

Prohibited distribution on other website.

Menuet du "Quintette à cordes en Mi"

G.275 ; Op.11 No.5

Luigi Boccherini (1743-1805)

Transc. : Bernard Dewagtere

Tempo di Menuetto con un poco di moto

Trompette en Ré

Piano

mp

p

This system contains the first four measures of the piece. The Trompette en Ré part (top staff) begins with a melodic phrase marked *mp*. The Piano part (bottom staves) features a rhythmic accompaniment of eighth notes, marked *p*. The key signature is one sharp (F#) and the time signature is 3/4.

Trp. (Ré)

Pno

This system contains measures 5 through 8. The Trp. (Ré) part (top staff) continues the melodic line with slurs and accents. The Pno part (bottom staves) maintains the eighth-note accompaniment. The key signature and time signature remain the same.

Trp. (Ré)

Pno

This system contains measures 9 through 12. The Trp. (Ré) part (top staff) includes a trill (*tr*) and two first/second endings. The Pno part (bottom staves) continues the accompaniment. The key signature and time signature remain the same.

Menuet du "Quintette à cordes en Mi"

Trp. (Ré) ²/₁₀

Pno ¹⁰

Detailed description: This system covers measures 10 to 12. The Trp. (Ré) part is in a treble clef with a key signature of two sharps (F# and C#). It features a melodic line with eighth notes and quarter notes, including accents and a flat sign in measure 11. The Pno part consists of two staves: the right hand plays a rhythmic accompaniment of eighth notes with chords, and the left hand plays a simple bass line of quarter notes.

Trp. (Ré) ¹³

mf

Pno ¹³

mp

Detailed description: This system covers measures 13 to 15. The Trp. (Ré) part continues its melodic line, marked with a mezzo-forte (*mf*) dynamic. The Pno part's right hand features a more active eighth-note accompaniment, marked mezzo-piano (*mp*), while the left hand maintains a steady quarter-note bass line.

Trp. (Ré) ¹⁶

Pno ¹⁶

Detailed description: This system covers measures 16 to 18. The Trp. (Ré) part continues with its melodic line, featuring accents. The Pno part's right hand has a consistent eighth-note accompaniment, and the left hand continues with a quarter-note bass line.

Trp. (Ré) ¹⁹

Pno ¹⁹

Detailed description: This system covers measures 19 to 21. The Trp. (Ré) part concludes with a melodic phrase that includes a first ending (marked '1.') and a second ending (marked '2.'). The Pno part also features first and second endings in the right hand, while the left hand continues with a quarter-note bass line.