



Bernard Dewagtere

France, SIN LE NOBLE

Menuet from "String quintet in E" (G.275 ; Op.11 No.5) Boccherini, Luigi

About the artist

Doctor in musicology, conductor and composer.

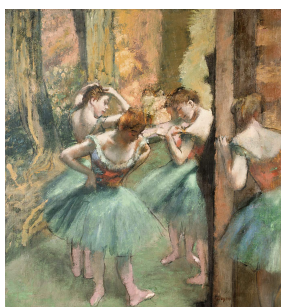
Compositions and arrangements from all eras, in all styles or musical genres and for any instrument or vocal training.

Qualification: PhD Musicology

Associate: SACEM - IPI code of the artist : 342990

Artist page : <https://www.free-scores.com/Download-PDF-Sheet-Music-bernard-dewagtere.htm>

About the piece



Title: Menuet from "String quintet in E" [G.275 ; Op.11 No.5]

Composer: Boccherini, Luigi

Arranger: Dewagtere, Bernard

Copyright: Copyright © Bernard Dewagtere

Publisher: Dewagtere, Bernard

Instrumentation: Flute and Organ

Style: Classical

Bernard Dewagtere on [free-scores.com](https://www.free-scores.com)

LICENSE

This sheet music requires an authorization
- for public performances
- for use by teachers

Buy this license at :

<https://www.free-scores.com//license?p=a9HAYhtlWB>



- listen to the audio
- share your interpretation
- comment
- pay the licence
- contact the artist

Prohibited distribution on other website.

Menuet du "Quintette à cordes en Mi"

G.275 ; Op.11 No.5

Luigi Boccherini (1743-1805)

Transc. : Bernard Dewagtere

Tempo di Menuetto con un poco di moto

The image displays a musical score for Flute and Organ, measures 1 through 6. The score is written in G major (one sharp) and 3/4 time. The tempo is 'Tempo di Menuetto con un poco di moto'. The organ part features a rhythmic accompaniment of eighth notes in the right hand and quarter notes in the left hand. The flute part has a melodic line with slurs and accents. Dynamics include *mp* (mezzo-piano) and *p* (piano). Measure 6 includes first endings for both parts.

Flûte

Orgue

Fl.

Org.

Menuet du "Quintette à cordes en Mi"

The image displays a musical score for a Minuet from the String Quintet in E major. The score is arranged in four systems, each featuring a Flute (Fl.) and Organ (Org.) part. The key signature is E major (two sharps) and the time signature is 2/9. The first system (measures 2-9) includes a first ending bracket and a second ending bracket. The second system (measures 12-15) includes dynamic markings *mf* and *mp*. The third system (measures 15-19) includes a *tr* marking. The fourth system (measures 19-22) includes first and second ending brackets. The Organ part consists of a continuous accompaniment of eighth notes in the right hand and quarter notes in the left hand.