



Bernard Dewagtere

France, SIN LE NOBLE

L'Arlésienne (Suite n°2) – 7. Menuet Bizet, Georges

About the artist

Doctor in musicology, conductor and composer.

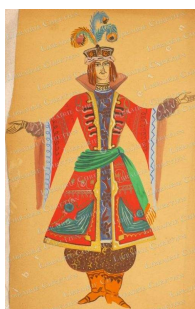
Compositions and arrangements from all eras, in all styles or musical genres and for any instrument or vocal training.

Qualification: PhD Musicology

Associate: SACEM - IPI code of the artist : 342990

Artist page : <https://www.free-scores.com/Download-PDF-Sheet-Music-bernard-dewagtere.htm>

About the piece



Title: L'Arlésienne (Suite n°2) – 7. Menuet

Composer: Bizet, Georges

Arranger: Dewagtere, Bernard

Copyright: Copyright © Bernard Dewagtere

Publisher: Dewagtere, Bernard

Instrumentation: Cello, Harp

Style: Romantic

Bernard Dewagtere on [free-scores.com](https://www.free-scores.com)

LICENSE

This sheet music requires an authorization
- for public performances
- for use by teachers

Buy this license at :

<https://www.free-scores.com//license?p=aeX4zgeyCn>



- listen to the audio
- share your interpretation
- comment
- pay the licence
- contact the artist

Prohibited distribution on other website.

L'Arlésienne (Suite n°2)

7. Menuet

Georges Bizet (1872)
Transc. : Bernard Dewagtere

Andantino quasi Allegretto ♩ = 74

Violoncelle

dolce

Harpe

pp *leggiero*

Vlc.

pp *p*

6

Vlc.

12

L'Arlesienne (Suite n°2)

2
17

Vlc.

più f

17

più f

23

Vlc.

cres - - cen - - do sf p

23

cres - - cen - - do sf p

28

Vlc.

più f

28

più f

33

Vlc.

poco sf p

33

poco sf p

Vlc. 37

Violin part: Measures 37-39. The violin plays a continuous eighth-note pattern in the bass clef. Measure 37 starts with a sharp sign above the staff. Measure 38 has a flat sign above the staff. Measure 39 has a flat sign above the staff.

Piano part: Measures 37-39. The piano accompaniment consists of chords in the bass clef. Measure 37 has a sharp sign above the staff. Measure 38 has a flat sign above the staff. Measure 39 has a flat sign above the staff.

Vlc. 40

Violin part: Measures 40-43. The violin continues with eighth-note patterns. Measure 40 has a sharp sign above the staff. Measure 41 has a flat sign above the staff. Measure 42 has a flat sign above the staff. Measure 43 has a flat sign above the staff. Dynamic markings *f* and *ff* are present.

Piano part: Measures 40-43. The piano accompaniment features chords and some melodic lines. Measure 40 has a sharp sign above the staff. Measure 41 has a flat sign above the staff. Measure 42 has a flat sign above the staff. Measure 43 has a flat sign above the staff. Dynamic markings *f* and *ff* are present.

Vlc. 44

Violin part: Measures 44-47. The violin continues with eighth-note patterns. Measure 44 has a sharp sign above the staff. Measure 45 has a flat sign above the staff. Measure 46 has a flat sign above the staff. Measure 47 has a flat sign above the staff. Dynamic marking *ff* is present.

Piano part: Measures 44-47. The piano accompaniment features chords and some melodic lines. Measure 44 has a sharp sign above the staff. Measure 45 has a flat sign above the staff. Measure 46 has a flat sign above the staff. Measure 47 has a flat sign above the staff. Dynamic marking *ff* is present.

Vlc. 48

Violin part: Measures 48-51. The violin continues with eighth-note patterns. Measure 48 has a sharp sign above the staff. Measure 49 has a flat sign above the staff. Measure 50 has a flat sign above the staff. Measure 51 has a flat sign above the staff. Dynamic marking *ff* is present.

Piano part: Measures 48-51. The piano accompaniment features chords and some melodic lines. Measure 48 has a sharp sign above the staff. Measure 49 has a flat sign above the staff. Measure 50 has a flat sign above the staff. Measure 51 has a flat sign above the staff. Dynamic marking *ff* is present.

L'Arlésienne (Suite n°2)

4
52

Vlc.

This system covers measures 4 to 52. The Violin part (Vlc.) is written in a single staff with a bass clef and a key signature of two flats. It features a continuous eighth-note pattern with various articulations. The Piano part is written in two staves (treble and bass clefs) and includes complex chordal textures and melodic lines. Measure numbers 4 and 52 are indicated at the beginning of the system.

56

Vlc.

This system covers measures 56 to 60. The Violin part continues with its eighth-note pattern. The Piano part shows a change in texture, with more prominent chords and melodic fragments. Measure number 56 is indicated at the beginning of the system.

60

Vlc.

This system covers measures 60 to 64. The Violin part maintains the eighth-note pattern. The Piano part continues with its complex accompaniment. Measure number 60 is indicated at the beginning of the system.

64

Vlc.

This system covers measures 64 to 68. The Violin part concludes with a final eighth-note pattern. The Piano part also concludes with a final chordal texture. A dynamic marking of *p* (piano) is present in the Violin part at measure 68 and in the Piano part at measure 67. Measure number 64 is indicated at the beginning of the system.

L'Arlésienne (Suite n°2)

6
84

Vlc.

f *pp dolcissimo*

88

Vlc.

f *pp dolcissimo*

91

Vlc.

smor - - zan - - do

94

Vlc.

smor - - zan - - do