



Bernard Dewagtere

France, SIN LE NOBLE

L'Arlésienne (Suite n°2) – 7. Menuet Bizet, Georges

About the artist

Doctor in musicology, conductor and composer.

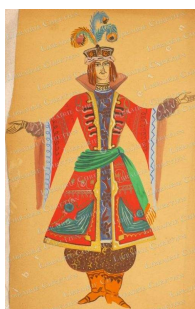
Compositions and arrangements from all eras, in all styles or musical genres and for any instrument or vocal training.

Qualification: PhD Musicology

Associate: SACEM - IPI code of the artist : 342990

Artist page : <https://www.free-scores.com/Download-PDF-Sheet-Music-bernard-dewagtere.htm>

About the piece



Title: L'Arlésienne (Suite n°2) – 7. Menuet

Composer: Bizet, Georges

Arranger: Dewagtere, Bernard

Copyright: Copyright © Bernard Dewagtere

Publisher: Dewagtere, Bernard

Instrumentation: Viola and Harp

Style: Romantic

Bernard Dewagtere on [free-scores.com](https://www.free-scores.com)

LICENSE

This sheet music requires an authorization
- for public performances
- for use by teachers

Buy this license at :

<https://www.free-scores.com//license?p=a6q56JS3Ya>



- listen to the audio
- share your interpretation
- comment
- pay the licence
- contact the artist

Prohibited distribution on other website.

L'Arlésienne (Suite n°2)

7. Menuet

Georges Bizet (1872)

Transc. : Bernard Dewagtere

Andantino quasi Allegretto ♩ = 74

Alto

dolce

Harpe

pp *leggiero*

Alt.

pp *p*

6

Alt.

12

L'Arlesienne (Suite n°2)

2
17

Alt.

piùf

17

piùf

23

Alt.

cres - - cen - - do sf p

23

cres - - cen - - do sf p

28

Alt.

piùf

28

piùf

33

Alt.

poco sf p

33

poco sf p

Alt. 37

37

Alt. 40

40

f *ff*

f *ff*

Alt. 44

44

ff

ff

Alt. 48

48

ff

L'Arlésienne (Suite n°2)

4
52

Alt.

52

This system covers measures 52 to 55. The Alto saxophone part (labeled 'Alt.') is in the bass clef and features a melodic line with eighth-note patterns and slurs. The piano accompaniment consists of two staves: the right hand plays chords and eighth-note patterns, while the left hand plays a bass line with eighth notes and chords. Dynamic markings include accents (>) and a piano (*p*) marking at the end of the system.

56

Alt.

56

This system covers measures 56 to 59. The Alto saxophone part continues with a melodic line. The piano accompaniment maintains the eighth-note patterns. Dynamic markings include accents (>) and a piano (*p*) marking at the end of the system.

60

Alt.

60

This system covers measures 60 to 63. The Alto saxophone part continues with a melodic line. The piano accompaniment maintains the eighth-note patterns. Dynamic markings include accents (>) and a piano (*p*) marking at the end of the system.

64

Alt.

64

This system covers measures 64 to 67. The Alto saxophone part continues with a melodic line. The piano accompaniment maintains the eighth-note patterns. Dynamic markings include accents (>) and a piano (*p*) marking at the end of the system.

Alt. 68

68

This system covers measures 68 to 71. The Alto part (left) features a melodic line with eighth-note patterns and slurs. The Piano part (right) consists of a steady eighth-note accompaniment in the right hand and a bass line of quarter notes in the left hand.

Alt. 72

72

più f

This system covers measures 72 to 75. The Alto part continues with its melodic line. The Piano part includes dynamic markings: *più f* (piano fortissimo) is indicated in both the right and left hands starting at measure 74.

Alt. 76

76

poco sf *p*

This system covers measures 76 to 79. The Alto part features a more complex melodic line with slurs. The Piano part includes dynamic markings: *poco sf* (piano poco fortissimo) and *p* (piano) are indicated in both the right and left hands.

Alt. 80

80

This system covers measures 80 to 83. The Alto part continues with its melodic line. The Piano part features a complex accompaniment with many sixteenth notes in the right hand and a bass line in the left hand.

L'Arlésienne (Suite n°2)

6
84

Alt.

f *pp dolcissimo*

88

Alt.

91

Alt.

smor - - zan - - do

94

Alt.