



Bernard Dewagtere

France, SIN LE NOBLE

L'Arlésienne (Suite n°1) - 3. Entr'acte Bizet, Georges

About the artist

Doctor in musicology, conductor and composer.

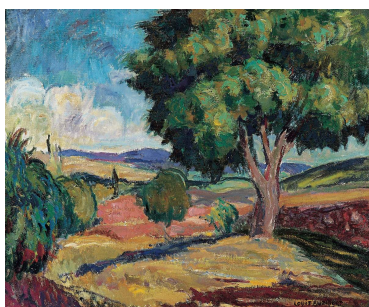
Compositions and arrangements from all eras, in all styles or musical genres and for any instrument or vocal training.

Qualification: PhD Musicology

Associate: SACEM - IPI code of the artist : 342990

Artist page : <https://www.free-scores.com/Download-PDF-Sheet-Music-bernard-dewagtere.htm>

About the piece



Title: L'Arlésienne (Suite n°1) - 3. Entr'acte
Composer: Bizet, Georges
Arranger: Dewagtere, Bernard
Copyright: Copyright © Bernard Dewagtere
Publisher: Dewagtere, Bernard
Instrumentation: Viola and Piano (or organ)
Style: Romantic

Bernard Dewagtere on [free-scores.com](https://www.free-scores.com)

LICENSE

This sheet music requires an authorization
- for public performances
- for use by teachers

Buy this license at :

<https://www.free-scores.com//license?p=awxwEBelXD>



- listen to the audio
- share your interpretation
- comment
- pay the licence
- contact the artist

Prohibited distribution on other website.

L'Arlésienne (Suite n°1)

3. Entr'acte

Georges Bizet (1872)

Transc. : Bernard Dewagtere

Adagio ♩ = 60

Alto

Piano

Alt.

Pno

Alt.

Pno

Alt. ¹⁸

Pno

Detailed description: This system covers measures 18 to 23. The Alto part (bass clef) features a melodic line with eighth and sixteenth notes, often beamed together. The Piano accompaniment (treble and bass clefs) consists of chords and rhythmic patterns, including a triplet in the bass line at measure 20. Dynamics include *ppp* and *pp*. Hairpins indicate volume changes.

Alt. ²⁴

Pno

Detailed description: This system covers measures 24 to 29. The Alto part continues with a melodic line. The Piano accompaniment features a triplet in the bass line at measure 24 and a *ppp* dynamic marking. The music concludes with a double bar line at the end of measure 29.

Alt. ³⁰

Pno

Detailed description: This system covers measures 30 to 34. The Alto part has a melodic line that ends with a double bar line at measure 34. The Piano accompaniment features a triplet in the bass line at measure 30 and a *smorzando* dynamic marking. The music concludes with a double bar line at the end of measure 34.