



MAURIZIO MACHELLA

Arranger, Interpreter, Publisher

Italia

About the artist

Famous musician and organist, known throughout the world.

Italian publisher, researcher and organist.

The I.net Greatest Organ Music Resource in the World.

The most complete private library of music scores for organ and harpsichord.

Published rare scores of organ and harpsichord music with Armelin Musica of Padova (www.armelin.it) and with the sheet music world center: "Free-scores.com".

More than 1,8 million downloads!

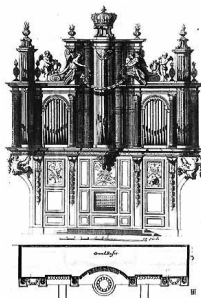
Remember ... all this work, if you can, make me an offer on Paypal.

Thanks!

Qualification: Organist

Personal web: <http://www.facebook.com/home.php?ref=home#/profile.php?id=100000082741780&ref=name>

About the piece



Title: TUI SUNT COELI per Canto e Alto e Organo Obbligato
["per il giorno del Santissimo Natale"]

Composer: Bellinzani, Paolo Benedetto

Licence: Public domain

Publisher: MACHELLA, MAURIZIO

Instrumentation: Organ, Voice

Style: Classical

MAURIZIO MACHELLA on free-scores.com

<http://www.free-scores.com/Download-PDF-Sheet-Music-giordaniello.htm>

- Contact the artist
- Write feedback comments
- Share your MP3 recording
- Web page and online audio access with QR Code :



Paolo Benedetto Bellinzani (1680 c.- 1757)

Maestro di Cappella del Duomo di Recanati dal Dicembre 1737 al Febbraio 1757

Tui sunt Coeli per Canto e Alto con Organo obbligato per il giorno del S.S.mo Natale

a cura di Maurizio Machella



Adagio

Canto

Alto

Organo

Pedale

1 Adagio

mano destra

mano sinistra

12/8

12/8

12/8

12/8

12/8

3

12/8

7

Tu - i sunt coe - li et

10

tu - a est ter -

13

ra et tu - a est

Tu - i sunt coe - li et tu - a est ter -

ter - ra et tu - a est ter - ra et tu - a est ter - ra tu -

16 ra et tu - a est ter - ra et tu - a est ter - ra

a est ter -

19 tu - a est ter -

ra tu - a est ter - ra tu - a est ter -

22 ra tu - a est ter - ra tu - a est ter -

6 6 6 4 5 3

ra

ra

25

or - bis ter - ra - rum et ple - ni - tu - dinem e - jus tu fun - da -

or - bis ter - ra - rum et ple - ni - tu - dinem e - jus tu fun - da -

28

sti ju - sti tia et ju - di - ci - um

sti ju - sti - tia et ju -

31

prae - pa - ra - tio se - dis tu - ae

34 di - ci - um prae - pa - ra - tio se - dis tu - ae

ju - sti - tia et ju - di - ci - um

37 ju - sti - tia et ju -

prae - pa - ra - tio se - dis tu - ae prae - pa - ra - tio se - dis tu -

40 di - ci - um prae - pa - ra - tio se - dis tu - ae prae - pa - ra - tio se - dis tu -

ae
ae

43

Piano

Piano

ju - sti - tia et ju -
ju - sti - tia et ju - di - ci - um prae - pa - ra - tio se - dis

46

di - ci - um prae - pa - ra - tio se - dis tu - ae.
tu - ae prae - pa - ra - tio se - dis tu - ae.

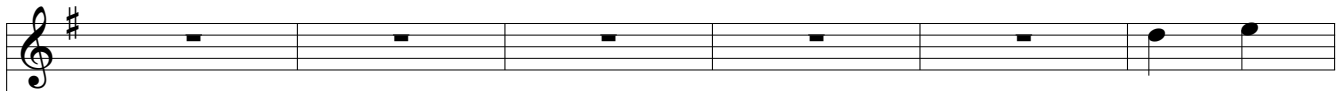
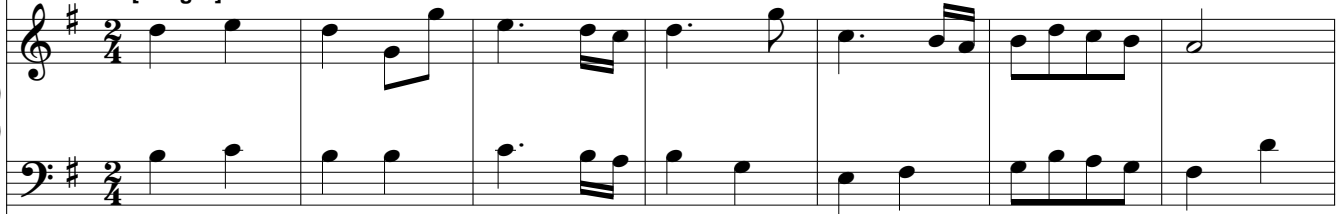
48

[Allegro]



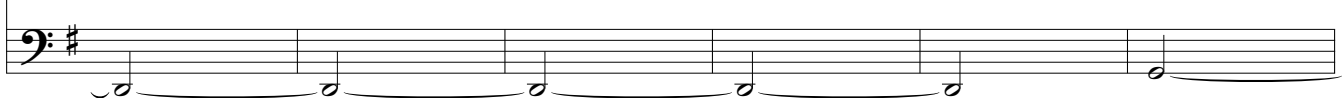
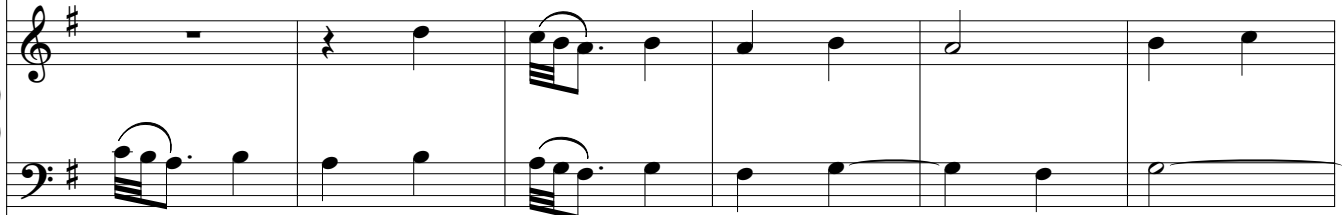
51

[Allegro]



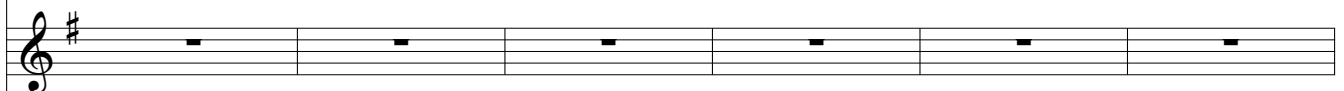
Al - le -

58

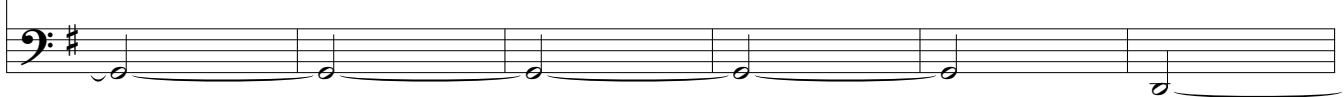
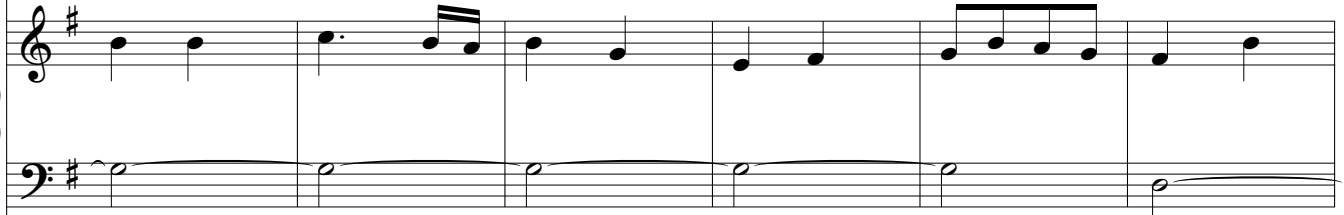


lu - ja al

le - lu - ja al -



64



le - lu - ja al - le - lu - ja

70 Al - le - lu - ja al -

al - le - lu -

76 le - lu - ja al - le - lu - ja al - le - lu -

al - le - lu -

ja al - le - lu - ja

82 ja al - le - lu - ja

7 7 6 5

87 al -

88

94 le - lu - ja al - le - lu - ja al -

95 al - le - lu - ja al -

96

97

98

99

100

101 al - le - lu - ja

102 le - lu - ja al - le - lu - ja

103

104

105

106

106

al - le - lu -

112

al - le - lu - ja al -

ja al - le - lu - ja al -

6 5 6 5 6 5 6

118

le - lu - ja

le - lu - ja

5 6 5 6 5

Piano

al -

124

al -

le - lu - ja.

130

le - lu - ja.