



Chris G. Pantazelos

United States (USA), Lowell

Sonata quasi una fantasia (I.Adagio) (moonlight op. 27 no. 2) Beethoven, Ludwig van

About the artist

He was born in the beautiful village of Georgitsi, near Sparta in Greece. At age 16 he began his Classical Guitar lessons. When he immigrated to the USA, In the early 1980's he studied Classical Guitar under Luis Arnold and Neil Anderson at the Boston Conservatory. He left the program to pursue studies in composition and arranging with Rouben Gregorian. Studied Byzantine music with Fotios Ketsetzis of Hellenic College in Brookline MA. He has researched extensively and studied the music and instruments of ancient Greece. He has been working as a professional Luthier (maker of stringed instruments) since the late 1980's. Has reconstructed ancient Greek instruments based on his research. He has built early instruments, folk instruments of the middle east and Greece as well as Guitars (Classical, Folk, Jazz) successfully expanding the plain range of these instruments to 4 or even 4, ½ octaves. He has also developed a 4, ½ octave version of the Gree... (more online)

Artist page : <https://www.free-scores.com/Download-PDF-Sheet-Music-cgp-music.htm>

About the piece



Title:	Sonata quasi una fantasia (I.Adagio) [moonlight op. 27 no. 2]
Composer:	Beethoven, Ludwig van
Arranger:	Pantazelos, Chris G.
Copyright:	- Copyright © Chris G. Pantazelos
Publisher:	Pantazelos, Chris G.
Instrumentation:	Guitar solo (standard notation)
Style:	Classical
Comment:	original for Piano

Chris G. Pantazelos on [free-scores.com](https://www.free-scores.com)



- listen to the audio
- share your interpretation
- comment
- contact the artist

Sonata quasi una fantasia

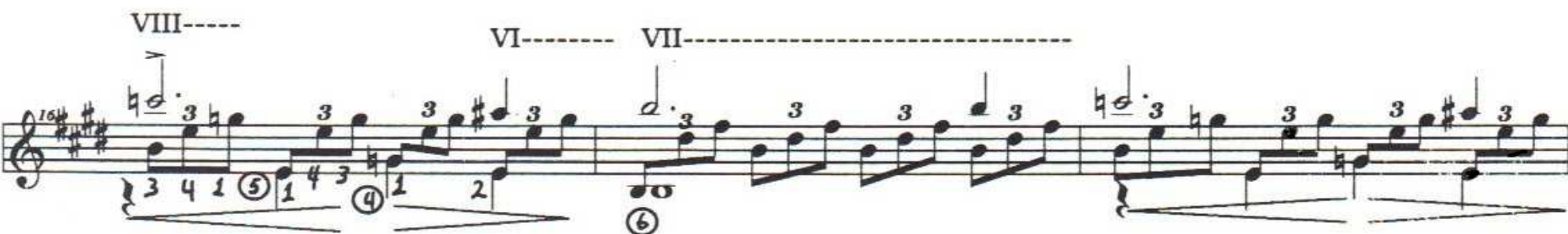
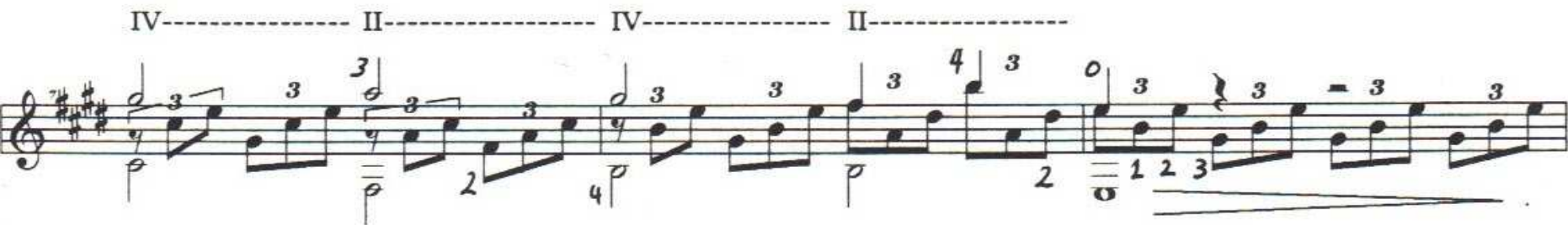
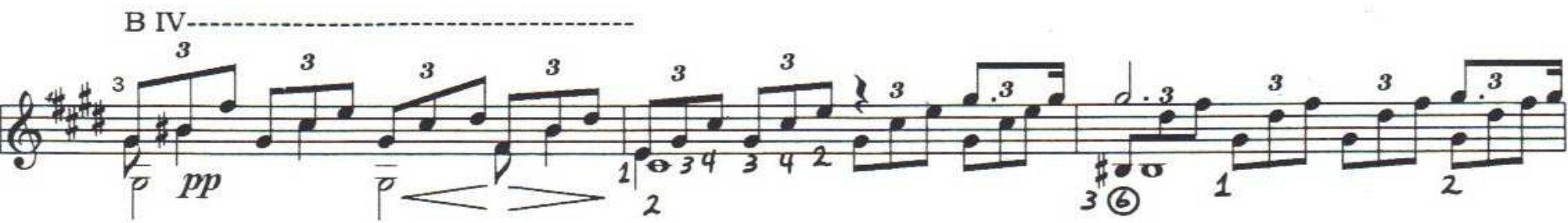
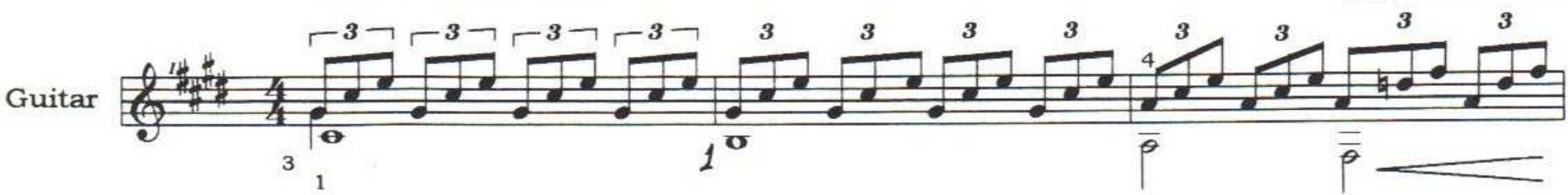
moonlight op. 27 no2

C.G.Pantazelos

L.van BEETHOVEN

Adagio Sostenuto (♩ = 52)

B II-----



2

VII-----

II----- III----- II-----

19

pp

II----- II----- IX-----

22

pp

p

IX----- IX----- IX----- IX-----

25

cresc.

dim.

IV----- IV----- IX-----

29

p

pp

31

pp

pp

IV-----

34

p

cresc.

dim.

A musical score for the song "The Rose Tree". The score is written on a single staff in treble clef, with a key signature of one sharp (F#) and a 4/4 time signature. The melody is written in a simple, folk-like style, featuring a series of eighth and sixteenth notes. The lyrics "The Rose Tree" are written below the staff, with the words "The", "Rose", "Tree", "The", "Rose", "Tree", "The", "Rose", "Tree", "The", "Rose", "Tree" aligned with the notes. The score includes a variety of musical notations, including a treble clef, a key signature of one sharp, a 4/4 time signature, and a series of notes and rests. There are also some decorative elements, such as a small "X" above the first note and a small "v" above the last note. The score is presented in a clear, legible format, suitable for a music book or a teaching resource.

