



# van der Wal Reinier

Netherlands, Gouda

## Weihnacht+Passionen Bach, Johann Sebastian

### About the artist

I was clarinetist in the "Koninklijke Militaire Kapel" (the Royal Military Band of the Netherlands) from 1972 till 2003. I also taught clarinet in the school of music in Gouda for more than 30 years. I arranged a lot of music for clarinet. In 1996 I started to study the cello for pleasure, which I still enjoy very much.

**Artist page :** <https://www.free-scores.com/Download-PDF-Sheet-Music-reinier-van-der-wal.htm>

### About the piece



**Title:** Weihnacht+Passionen  
**Composer:** Bach, Johann Sebastian  
**Arranger:** Reinier, van der Wal  
**Copyright:** free download  
**Instrumentation:** Cello solo  
**Style:** Classical

van der Wal Reinier on [free-scores.com](https://www.free-scores.com)



- share your interpretation
- comment
- contact the artist

# Weihnachts-Oratorium

## No. 4 Aria

J. S. Bach

Bew. Reinier

*Cello*  $\frac{3}{8}$

7

13

18

24

30

35

41

47

52

57

62

*f* *tr* *f* *tr* *Fin*

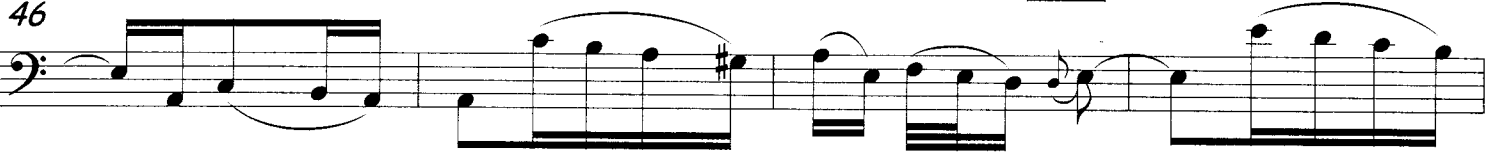
*p* *f* *tr* *f* *p* *D.C.*

# Weihnachts-Oratorium

## No.15 Aria

J.S. Bach

Bew. Reinier



# Weihnachts-Oratorium

## No.19 Aria

J.S.Bach

Bew. Reinier



# Weihnachts-Oratorium

No. 31 Aria

J.S. Bach

Bew. Reinier







# Mattheus-Passion

No. 39 Aria *impressie*

J.S. Bach

Bew. Reinier van der Wal

Cello  $\frac{12}{8}$



# Mattheus-Passion

No. 49 Aria impressie

J.S. Bach

Bew. Reinier van der Wal

Cello

5

8

11

14 *Fin*

17

20 *tr.*

23 *tr.*

26

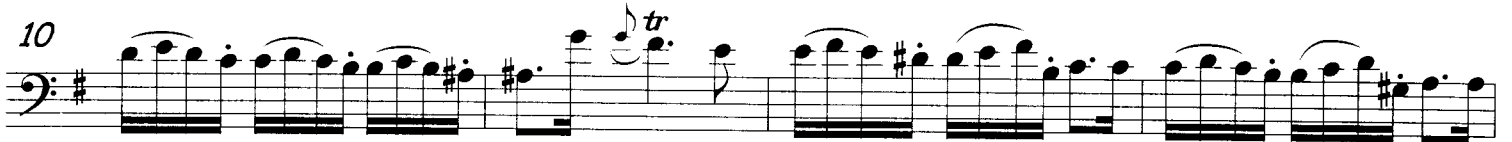
29 *DC*

# Johannes-Passion

## No.19 Aria impressie

J.S.Bach

Bew. Reinier van der Wal



# Clavier-Concert Nr. 5

Largo

J. S. Bach

Bew. Reinier

Cello

Measures 1-3: Cello part, bass clef, key signature of one sharp (F#), common time signature (C). The music features a melodic line with a trill (tr) and a fermata.

4

Measures 4-5: Continuation of the melodic line with a fermata.

6

Measures 6-7: Continuation of the melodic line with a fermata.

8

Measures 8-9: Continuation of the melodic line with a fermata and a triplet (3).

10

Measures 10-11: Continuation of the melodic line with a triplet (3) and a fermata.

12

Measures 12-13: Continuation of the melodic line with a fermata and four triplets (3).

14

Measures 14-15: Continuation of the melodic line with a triplet (3) and a fermata.

16

Measures 16-17: Continuation of the melodic line with a trill (tr) and a fermata.

18

Measures 18-19: Continuation of the melodic line with a trill (tr) and a fermata.

20

Measures 20-21: Continuation of the melodic line with a fermata and a final cadence.