



Mike Magatagan

United States (USA), SierraVista

Prelude & Fugue in D Minor for Woodwind Quartet (BWV 539) Bach, Johann Sebastian

About the artist

I'm a software engineer. Basically, I'm computer geek who loves to solve problems. I have been developing software for the last 25+ years but have recently rekindled my love of music.

Many of my scores are posted with individual parts and matching play-along however, this is not always practical. If you would like individual parts to any of my scores or other specific tailoring, please contact me directly and I will try to accommodate your specific needs.

Artist page : <https://www.free-scores.com/Download-PDF-Sheet-Music-magataganm.htm>

About the piece



Title:	Prelude & Fugue in D Minor for Woodwind Quartet [BWV 539]
Composer:	Bach, Johann Sebastian
Arranger:	Magatagan, Mike
Copyright:	Public Domain
Publisher:	Magatagan, Mike
Instrumentation:	Wind Quartet: Flute, Oboe, Clarinet, Bassoon
Style:	Baroque
Comment:	When one contemplates Johann Sebastian Bach and his role in the development of the prelude and fugue, one naturally thinks of the Well-Tempered Clavier, the famous collection in which he explored the possibilities of prelude and fugue writing in an encompassing, encyclopedic way. But the Well-Tempered Clavier represents Bach's summary of a genre that he codified and refined at an earlier point in his life, in a series of adventurous and increasin... (more online)

Mike Magatagan on [free-scores.com](https://www.free-scores.com)



- listen to the audio
- share your interpretation
- comment
- contact the artist



Prelude & Fugue

in D Minor

J.S. Bach (BWV 539)

Arranged for Woodwind Quartet by Mike Magatagan 2013

Prelude (♩ = 70)

Flute *mf*

Oboe *mf*

Bb Clarinet *mf*

Bassoon *mf*

6

F

O

C

B

11

F

O

C

B

16

F

O

C

B

21

F

O

C

B

27

F

O

C

B

33

F

O

C

B

38

F

O

C

B

Fugue (♩ = 72)

Flute

Oboe

Bb Clarinet

Bassoon

5

F

O

C

B

mf

8

F

O

C

B

11

F

O

C

B

14

F
O
C
B

18

F
O
C
B

22

F
O
C
B

25

F

O

C

B

29

F

O

C

B

32

F

O

C

B

35

F
O
C
B

39

F
O
C
B

43

F
O
C
B

46

F
O
C
B

49

F
O
C
B

53

F
O
C
B

57

F
O
C
B

62

F
O
C
B

66

F
O
C
B

70

F
O
C
B

73

F
O
C
B

76

F
O
C
B

79

F
O
C
B

82

F
O
C
B

86

F
O
C
B

90

F
O
C
B

93

F
O
C
B

95

F
O
C
B

string.
espressivo
tr

Flute

Prelude & Fugue

in D Minor

J.S. Bach (BWV 539)

Arranged for Woodwind Quartet by Mike Magatagan 2013

Prelude (♩ = 70)

10

19

27

37

mf

tr

tr

The Prelude section consists of 37 measures. It begins with a treble clef, a key signature of two flats (B-flat and E-flat), and a common time signature (C). The tempo is marked as quarter note = 70. The first measure starts with a mezzo-forte (*mf*) dynamic. The melody features a series of eighth and sixteenth notes, with some measures containing trills. Measure numbers 10, 19, 27, and 37 are indicated at the start of their respective staves.

Fugue (♩ = 72)

2

9

13

18

25

31

mf

tr

The Fugue section consists of 31 measures. It begins with a treble clef, a key signature of two flats (B-flat and E-flat), and a common time signature (C). The tempo is marked as quarter note = 72. The first measure starts with a mezzo-forte (*mf*) dynamic. The melody is more complex, featuring many sixteenth and thirty-second notes, with some measures containing trills. Measure numbers 2, 9, 13, 18, 25, and 31 are indicated at the start of their respective staves.

35

41

46

53

59

64

69

74

78

82

87

93

string.

espressivo

Oboe

Prelude & Fugue in D Minor

J.S. Bach (BWV 539)

Arranged for Woodwind Quartet by Mike Magatagan 2013

Prelude (♩ = 70)

14

23

34

Fugue (♩ = 72)

8

13

19

24

34

41

46

50

56

62

68

73

78

82

89

93

string.

Bb Clarinet

Prelude & Fugue

in D Minor

J.S. Bach (BWV 539)

Arranged for Woodwind Quartet by Mike Magatagan 2013

Prelude (♩ = 70)

14

2

26

35

Fugue (♩ = 72)

10

17

23

27

34

40

46

51

57

63

68

73

79

86

92

string.

Bassoon

Prelude & Fugue

in D Minor

J.S. Bach (BWV 539)

Arranged for Woodwind Quartet by Mike Magatagan 2013

Prelude (♩ = 70)

mf

9

16

25

36

43

Fugue (♩ = 72)

mf

11

18

22

27

33



39



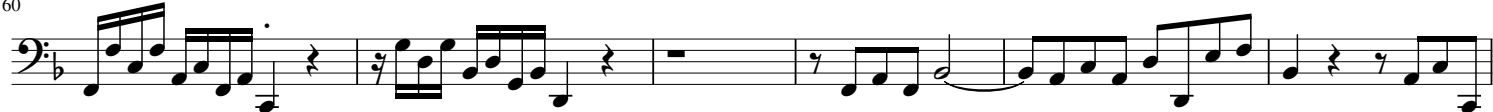
47



54



60



66



73



80



86



93

*string.*