



Mike Magatagan

United States (USA), SierraVista

Fantasia & Fugue in A Minor for Piano (BWV 944) Bach, Johann Sebastian

About the artist

I'm a software engineer. Basically, I'm computer geek who loves to solve problems. I have been developing software for the last 25+ years but have recently rekindled my love of music.

Many of my scores are posted with individual parts and matching play-along however, this is not always practical. If you would like individual parts to any of my scores or other specific tailoring, please contact me directly and I will try to accommodate your specific needs.

Artist page : <https://www.free-scores.com/Download-PDF-Sheet-Music-magataganm.htm>

About the piece



Title:	Fantasia & Fugue in A Minor for Piano [BWV 944]
Composer:	Bach, Johann Sebastian
Arranger:	Magatagan, Mike
Copyright:	Public Domain
Publisher:	Magatagan, Mike
Instrumentation:	Piano solo
Style:	Baroque
Comment:	Johann Sebastian Bach was a German composer, organist, harpsichordist, violist, and violinist whose sacred and secular works for choir, orchestra, and solo instruments drew together the strands of the Baroque period and brought it to its ultimate maturity. Although he did not introduce new forms, he enriched the prevailing German style with a robust contrapuntal technique, an unrivalled control of harmonic and motivic organisation, and the adapta... (more online)

Mike Magatagan on [free-scores.com](https://www.free-scores.com)



- listen to the audio
- share your interpretation
- comment
- contact the artist



Fantasia & Fugue *in A Minor*

J. S. Bach (BWV 944)

Transcribed for Piano by Mike Magatagan 2017

I. Fantasia (♩ = 60)

Piano

mf

Red. * Red. * Red. * Red. * Red. *

2

Red. * Red. * Red. * Red. * Red. *

3

Red. * Red. * Red. * Red. * Red. *

4

Red. * Red. * Red. * Red. * Red. *

5

Ped. * Ped. * Ped. * Ped. * Ped. *

6

Ped. * Ped. * Ped. * Ped. * Ped. *

7

Ped. * Ped. * Ped. * Ped. * Ped. *

8

Ped. * Ped. * Ped. * Ped. * Ped. *

9

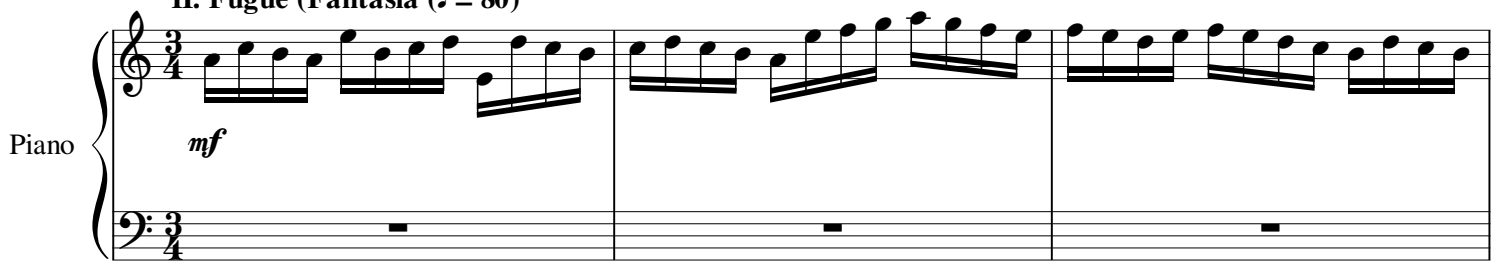
rit.

Ped. * Ped. * Ped. * Ped. * Ped. *

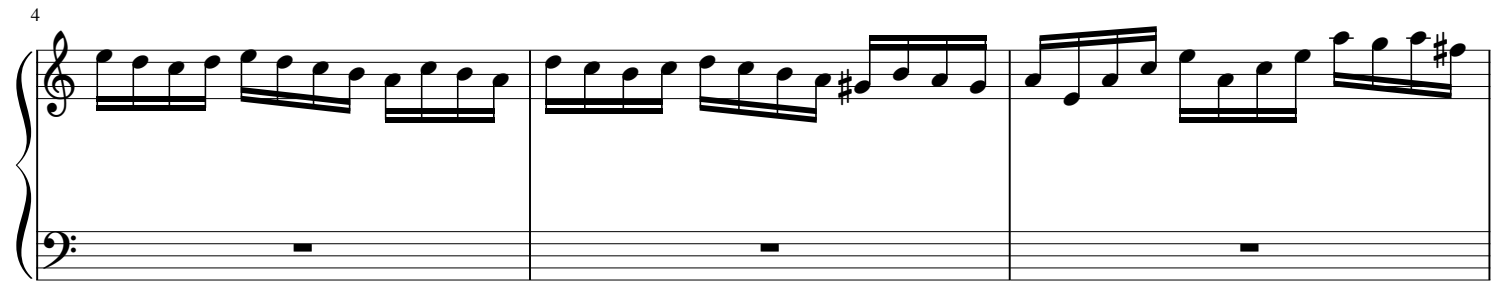
II. Fugue (Fantasia (♩ = 80))

Piano

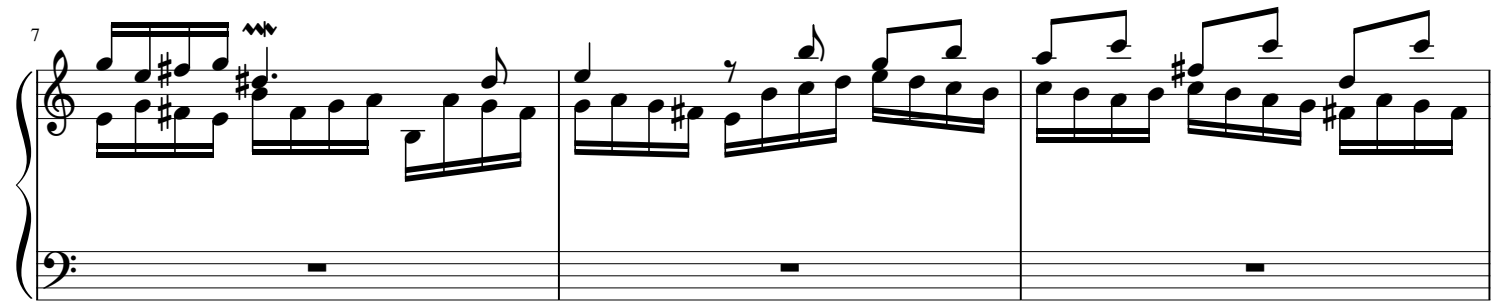
mf



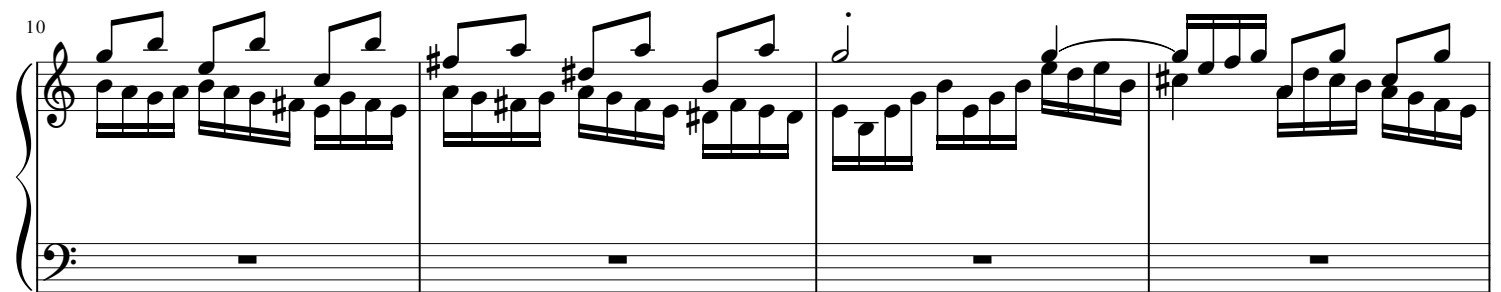
4



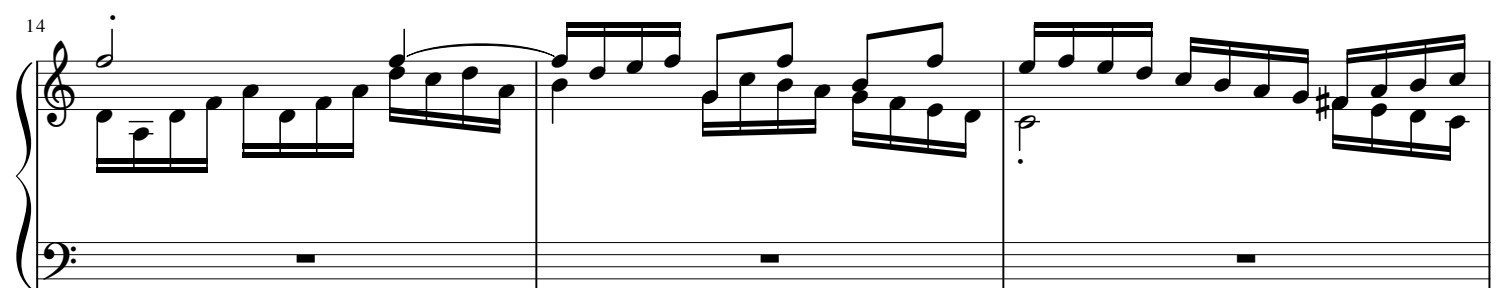
7



10



14



17

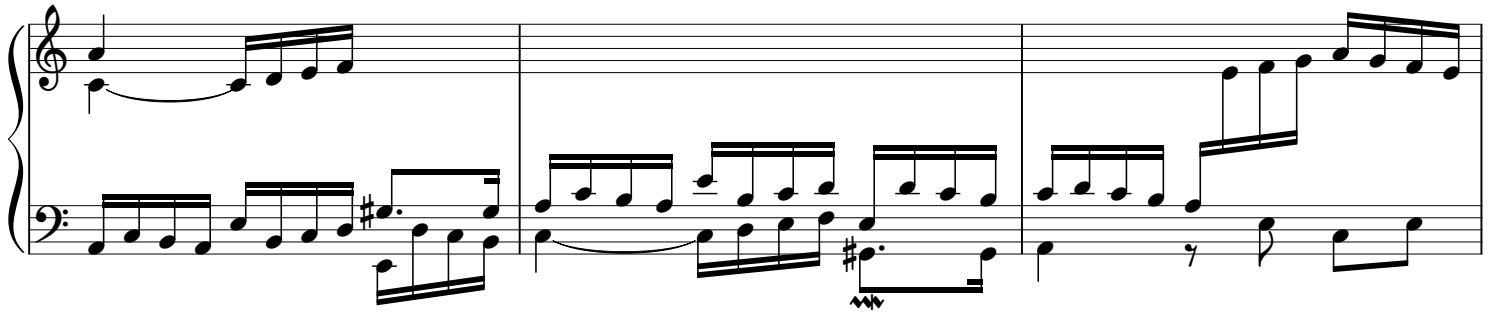
20

23

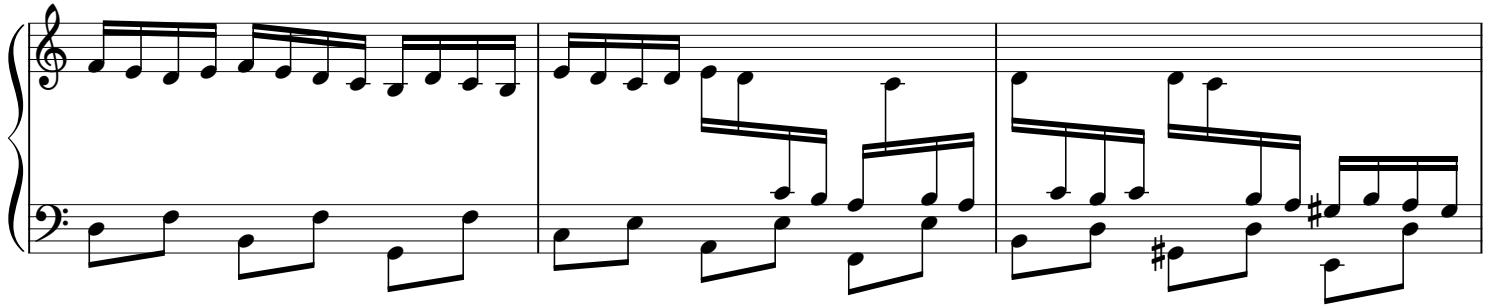
26

29

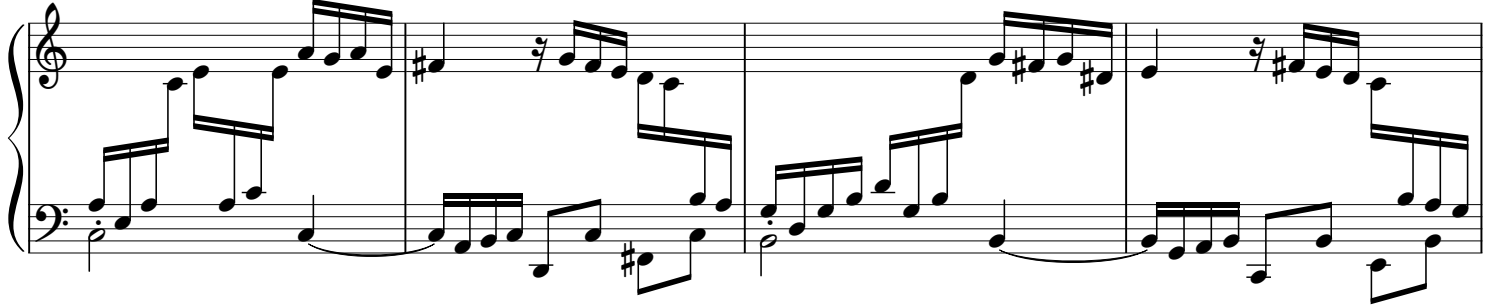
33



36



39



43



46



49

Measures 49-51 of the musical score. The treble clef staff contains a series of eighth and sixteenth notes, some with accidentals (sharps and naturals). The bass clef staff features a steady eighth-note accompaniment pattern.

52

Measures 52-54 of the musical score. The treble clef staff continues with melodic lines, including some beamed sixteenth notes. The bass clef staff maintains the eighth-note accompaniment.

55

Measures 55-57 of the musical score. The treble clef staff shows a continuous flow of eighth notes. The bass clef staff has a more varied accompaniment with some rests and longer note values.

58

Measures 58-60 of the musical score. The treble clef staff features a melodic line with a long, sweeping slur across measures 59 and 60. The bass clef staff continues with eighth-note accompaniment.

61

Measures 61-63 of the musical score. The treble clef staff has a melodic line with a slur over measures 62 and 63. The bass clef staff continues with eighth-note accompaniment.

64

67

70

73

77

81

85

88

92

96

100

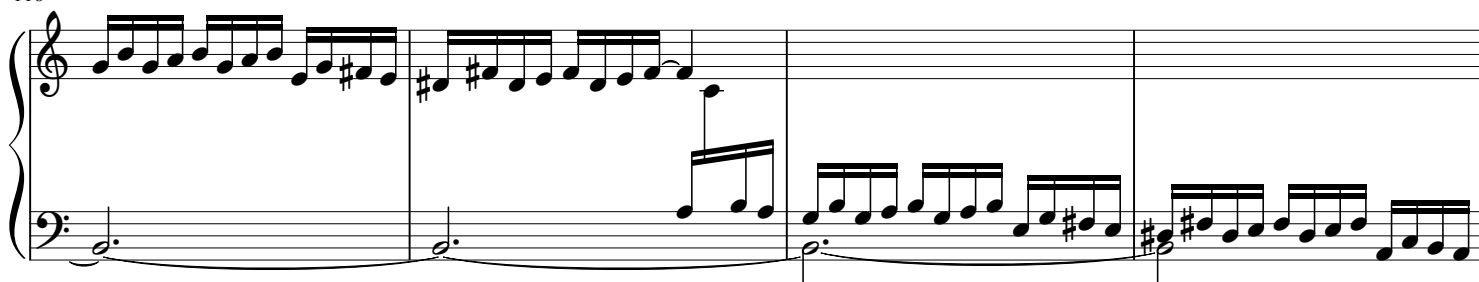
104

108

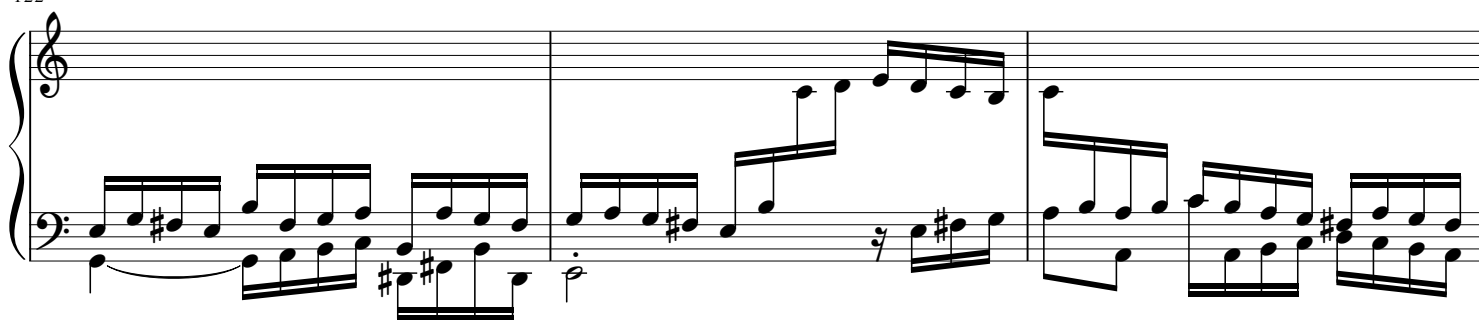
112

115

118



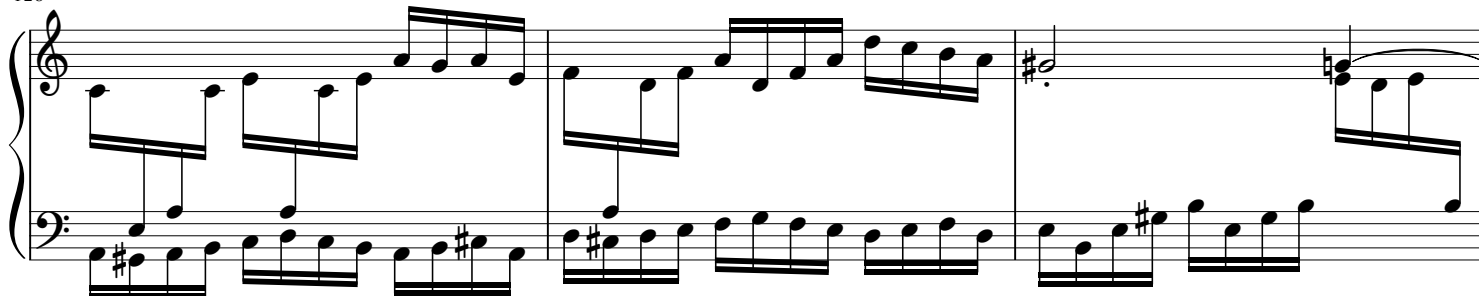
122



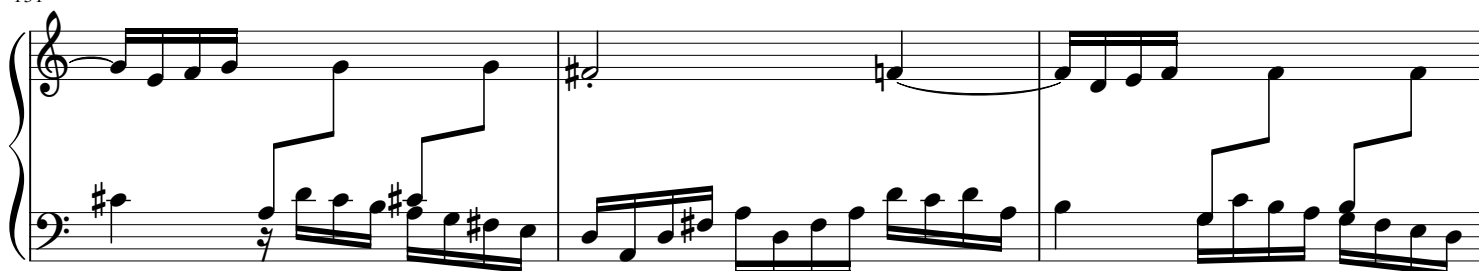
125



128



131



134

Measures 134-136 of the Fantasia & Fugue in A Minor. Measure 134 features a treble clef with a half note G4 and a quarter rest, and a bass clef with a half note F#3 and a quarter rest. Measure 135 continues with a treble clef half note G4 and a quarter rest, and a bass clef half note F#3 and a quarter rest. Measure 136 has a treble clef half note G4 and a quarter rest, and a bass clef half note F#3 and a quarter rest, with a trill (tr) marked over the G4.

137

Measures 137-140 of the Fantasia & Fugue in A Minor. Measure 137 has a treble clef half note G4 and a quarter rest, and a bass clef half note F#3 and a quarter rest. Measure 138 has a treble clef half note G4 and a quarter rest, and a bass clef half note F#3 and a quarter rest. Measure 139 has a treble clef half note G4 and a quarter rest, and a bass clef half note F#3 and a quarter rest. Measure 140 has a treble clef half note G4 and a quarter rest, and a bass clef half note F#3 and a quarter rest.

141

Measures 141-143 of the Fantasia & Fugue in A Minor. Measure 141 has a treble clef half note G4 and a quarter rest, and a bass clef half note F#3 and a quarter rest. Measure 142 has a treble clef half note G4 and a quarter rest, and a bass clef half note F#3 and a quarter rest. Measure 143 has a treble clef half note G4 and a quarter rest, and a bass clef half note F#3 and a quarter rest.

144

Measures 144-146 of the Fantasia & Fugue in A Minor. Measure 144 has a treble clef half note G4 and a quarter rest, and a bass clef half note F#3 and a quarter rest. Measure 145 has a treble clef half note G4 and a quarter rest, and a bass clef half note F#3 and a quarter rest. Measure 146 has a treble clef half note G4 and a quarter rest, and a bass clef half note F#3 and a quarter rest.

147

Measures 147-149 of the Fantasia & Fugue in A Minor. Measure 147 has a treble clef half note G4 and a quarter rest, and a bass clef half note F#3 and a quarter rest. Measure 148 has a treble clef half note G4 and a quarter rest, and a bass clef half note F#3 and a quarter rest. Measure 149 has a treble clef half note G4 and a quarter rest, and a bass clef half note F#3 and a quarter rest.

150

Measures 150-152 of the Fantasia & Fugue in A Minor. Measure 150 features a treble staff with a half note G4, a quarter note A4, and a half note B4, with a slur over the last two. The bass staff has a half note A3, a quarter note G3, and a half note F3, with a slur over the last two. Measure 151 has a whole note G4 in the treble and a whole note A3 in the bass. Measure 152 has a treble staff with a half note G4, a quarter note A4, and a half note B4, with a slur over the last two. The bass staff has a half note A3, a quarter note G3, and a half note F3, with a slur over the last two.

153

Measures 153-155 of the Fantasia & Fugue in A Minor. Measure 153 has a treble staff with a half note G4, a quarter note A4, and a half note B4, with a slur over the last two. The bass staff has a half note A3, a quarter note G3, and a half note F3, with a slur over the last two. Measure 154 has a treble staff with a half note G4, a quarter note A4, and a half note B4, with a slur over the last two. The bass staff has a half note A3, a quarter note G3, and a half note F3, with a slur over the last two. Measure 155 has a treble staff with a half note G4, a quarter note A4, and a half note B4, with a slur over the last two. The bass staff has a half note A3, a quarter note G3, and a half note F3, with a slur over the last two.

156

Measures 156-158 of the Fantasia & Fugue in A Minor. Measure 156 has a treble staff with a half note G4, a quarter note A4, and a half note B4, with a slur over the last two. The bass staff has a half note A3, a quarter note G3, and a half note F3, with a slur over the last two. Measure 157 has a treble staff with a half note G4, a quarter note A4, and a half note B4, with a slur over the last two. The bass staff has a half note A3, a quarter note G3, and a half note F3, with a slur over the last two. Measure 158 has a treble staff with a half note G4, a quarter note A4, and a half note B4, with a slur over the last two. The bass staff has a half note A3, a quarter note G3, and a half note F3, with a slur over the last two.

159

Measures 159-161 of the Fantasia & Fugue in A Minor. Measure 159 has a treble staff with a half note G4, a quarter note A4, and a half note B4, with a slur over the last two. The bass staff has a half note A3, a quarter note G3, and a half note F3, with a slur over the last two. Measure 160 has a treble staff with a half note G4, a quarter note A4, and a half note B4, with a slur over the last two. The bass staff has a half note A3, a quarter note G3, and a half note F3, with a slur over the last two. Measure 161 has a treble staff with a half note G4, a quarter note A4, and a half note B4, with a slur over the last two. The bass staff has a half note A3, a quarter note G3, and a half note F3, with a slur over the last two.

162

Measures 162-164 of the Fantasia & Fugue in A Minor. Measure 162 has a treble staff with a half note G4, a quarter note A4, and a half note B4, with a slur over the last two. The bass staff has a half note A3, a quarter note G3, and a half note F3, with a slur over the last two. Measure 163 has a treble staff with a half note G4, a quarter note A4, and a half note B4, with a slur over the last two. The bass staff has a half note A3, a quarter note G3, and a half note F3, with a slur over the last two. Measure 164 has a treble staff with a half note G4, a quarter note A4, and a half note B4, with a slur over the last two. The bass staff has a half note A3, a quarter note G3, and a half note F3, with a slur over the last two.

165

168

171

175

179

182

Measures 182-184. The right hand has a whole rest in measure 182. In measure 183, the right hand plays a half note G4. In measure 184, the right hand plays a half note A4. The left hand plays a continuous eighth-note pattern in A minor throughout these measures.

185

Measures 185-187. The right hand plays a half note G4 in measure 185, a half note A4 in measure 186, and a half note B4 in measure 187. The left hand continues the eighth-note pattern.

188

Measures 188-190. The right hand plays a half note C5 in measure 188, a half note D5 in measure 189, and a half note E5 in measure 190. The left hand continues the eighth-note pattern.

191

Measures 191-193. The right hand plays a half note F5 in measure 191, a half note G5 in measure 192, and a half note A5 in measure 193. The left hand continues the eighth-note pattern.

194

Measures 194-196. The right hand plays a half note B5 in measure 194, a half note C6 in measure 195, and a half note D6 in measure 196. The left hand continues the eighth-note pattern. The piece ends with a double bar line in measure 196.