



# Gianfranco Gioia

Italia, Palermo

## Contrapunctus II from "The Art of the Fugue" BWV 1080 Bach, Johann Sebastian

### About the artist

Born on the 16th of August 1971 in Palermo. He is saxophonist, clarinetist and composer.  
For contact visit [www.gianfrancogioia.it](http://www.gianfrancogioia.it)

All compositions of Gianfranco Gioia are covered by copyright and are deposited at the Società Italiana Autori Editori (SIAE)

**Qualification:** Clarinet, saxophone

**Associate:** SIAE

**Artist page :** <https://www.free-scores.com/Download-PDF-Sheet-Music-gianfranco-gioia.htm>

### About the piece



**Title:** Contrapunctus II from "The Art of the Fugue" BWV 1080  
**Composer:** Bach, Johann Sebastian  
**Arranger:** Gioia, Gianfranco  
**Copyright:** Domaine Public  
**Instrumentation:** Saxophone quartet  
**Style:** Baroque

### Gianfranco Gioia on [free-scores.com](http://free-scores.com)



This work is not Public Domain. You must contact the artist for any use outside the private area.



- listen to the audio
- share your interpretation
- comment
- contact the artist

# Art of the Fugue

## Contrapunctus II

J.S. Bach, BWV 1080

Trascrizione di Gianfranco Gioia

Sax soprano

Sax contralto

Sax tenore

Sax baritono

7

Sax S.

Sax C.

Sax T.

Sax B.

12

Sax S.

Sax C.

Sax T.

Sax B.

Art of the Fugue

2

17

Sax S.

Sax C.

Sax T.

Sax B.

This system of music covers measures 17 through 21. It features four staves: Saxophone Soprano (Sax S.), Saxophone Contralto (Sax C.), Saxophone Tenor (Sax T.), and Saxophone Baritone (Sax B.). The key signature is one sharp (F#). The Soprano part begins with a long note and a slur over the next two measures. The Contralto and Tenor parts play a rhythmic eighth-note pattern. The Baritone part plays a similar pattern but with a different melodic line. The system concludes with a final measure where the Soprano and Contralto parts have rests, while the Tenor and Baritone parts continue their lines.

22

Sax S.

Sax C.

Sax T.

Sax B.

This system of music covers measures 22 through 25. The Soprano part has a rest in measure 22, followed by a melodic line in measure 23. The Contralto part has a rest in measure 22 and then plays a melodic line. The Tenor part has a rest in measure 22 and then plays a melodic line. The Baritone part has a rest in measure 22 and then plays a melodic line. The system concludes with a final measure where the Soprano and Contralto parts have rests, while the Tenor and Baritone parts continue their lines.

26

Sax S.

Sax C.

Sax T.

Sax B.

This system of music covers measures 26 through 29. The Soprano part plays a melodic line. The Contralto part plays a melodic line. The Tenor part plays a melodic line. The Baritone part plays a melodic line. The system concludes with a final measure where the Soprano and Contralto parts have rests, while the Tenor and Baritone parts continue their lines.

30

Sax S.

Sax C.

Sax T.

Sax B.

34

Sax S.

Sax C.

Sax T.

Sax B.

39

Sax S.

Sax C.

Sax T.

Sax B.

Art of the Fugue

4

43

Sax S.

Sax C.

Sax T.

Sax B.

This system of music covers measures 43 to 47. It features four staves: Saxophone Soprano (Sax S.), Saxophone Contralto (Sax C.), Saxophone Tenor (Sax T.), and Saxophone Bass (Sax B.). The key signature is one sharp (F#). The Sax S. part begins with a melodic line marked with a fermata. The Sax C. part has a more active, rhythmic line. The Sax T. part provides harmonic support with a steady eighth-note pattern. The Sax B. part is mostly silent, indicated by a flat line.

48

Sax S.

Sax C.

Sax T.

Sax B.

This system of music covers measures 48 to 52. The Sax S. part continues its melodic line with some chromaticism. The Sax C. part has a more active, rhythmic line. The Sax T. part provides harmonic support with a steady eighth-note pattern. The Sax B. part is mostly silent, indicated by a flat line.

53

Sax S.

Sax C.

Sax T.

Sax B.

This system of music covers measures 53 to 57. The Sax S. part continues its melodic line with some chromaticism. The Sax C. part has a more active, rhythmic line. The Sax T. part provides harmonic support with a steady eighth-note pattern. The Sax B. part is mostly silent, indicated by a flat line.

58

Sax S.

Sax C.

Sax T.

Sax B.

63

Sax S.

Sax C.

Sax T.

Sax B.

68

Sax S.

Sax C.

Sax T.

Sax B.

Art of the Fugue

6

72

Sax S.

Sax C.

Sax T.

Sax B.

77

Sax S.

Sax C.

Sax T.

Sax B.

81

Sax S.

Sax C.

Sax T.

Sax B.

Partitura

# Art of the Fugue

Contrapunctus II

J.S. Bach, BWV 1080

Trascrizione di Gianfranco Gioia

Sax soprano

12

Sax S.

Sax S.

Sax S.

22

2

Sax S.

Sax S.

Sax S.

Sax S.

Sax S.

Sax S.

Sax S.



Art of the Fugue

2  
52

Sax S.

58

Sax S.

62

Sax S.

66

Sax S.

70

Sax S.

73

Sax S.

77

Sax S.

80

Sax S.

84

Sax S.

Partitura

# Art of the Fugue

Contrapunctus II

J.S. Bach, BWV 1080

Trascrizione di Gianfranco Gioia

Sax contralto



Sax C.



Sax C.



Sax C.



Sax C.



Sax C.



Sax C.



Sax C.




Sax C.



Sax C.



Sax C.



Art of the Fugue

2  
63

Sax C.



69

Sax C.



74

Sax C.



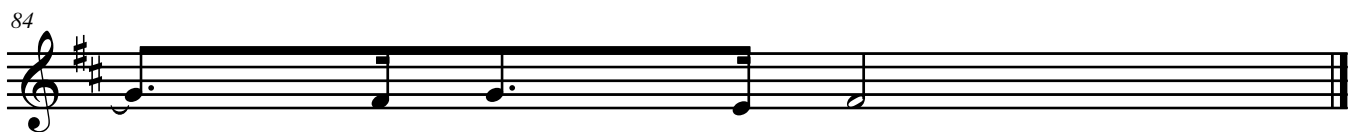
79

Sax C.



84

Sax C.



Partitura

# Art of the Fugue

Contrapunctus II

J.S. Bach, BWV 1080

Trascrizione di Gianfranco Gioia

Sax tenore

4

Sax T.

Sax T.

Sax T.

Sax T.

Sax T.

Sax T.

Sax T.

Sax T.

Sax T.

Sax T.

Art of the Fugue

2  
61

Sax T.



66

Sax T.



73

Sax T.



78

Sax T.



83

Sax T.



Partitura

# Art of the Fugue

Contrapunctus II

J.S. Bach, BWV 1080

Trascrizione di Gianfranco Gioia

Sax baritono



Musical staff for Sax baritono, measures 1-4. The staff is in treble clef with a key signature of two sharps (F# and C#) and a common time signature. It begins with a whole note G4, followed by a half note A4, a half note B4, and a quarter note C5. The final measure contains a half note G4 and a quarter note C5.

Sax B. 5



Musical staff for Sax B., measures 5-8. The staff is in treble clef with a key signature of two sharps. It begins with a quarter note G4, followed by a quarter note A4, a quarter note B4, and a quarter note C5. The notes are grouped in pairs with slurs and ties.

Sax B. 9



Musical staff for Sax B., measures 9-12. The staff is in treble clef with a key signature of two sharps. It begins with a quarter note G4, followed by a quarter note A4, a quarter note B4, and a quarter note C5. The notes are grouped in pairs with slurs and ties.

Sax B. 13



Musical staff for Sax B., measures 13-16. The staff is in treble clef with a key signature of two sharps. It begins with a quarter note G4, followed by a quarter note A4, a quarter note B4, and a quarter note C5. The notes are grouped in pairs with slurs and ties.

Sax B. 18



Musical staff for Sax B., measures 18-21. The staff is in treble clef with a key signature of two sharps. It begins with a quarter note G4, followed by a quarter note A4, a quarter note B4, and a quarter note C5. The notes are grouped in pairs with slurs and ties.

Sax B. 24



Musical staff for Sax B., measures 24-27. The staff is in treble clef with a key signature of two sharps. It begins with a quarter note G4, followed by a quarter note A4, a quarter note B4, and a quarter note C5. The notes are grouped in pairs with slurs and ties.

Sax B. 29



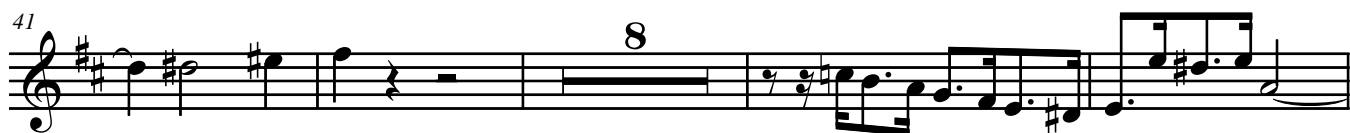
Musical staff for Sax B., measures 29-32. The staff is in treble clef with a key signature of two sharps. It begins with a quarter note G4, followed by a quarter note A4, a quarter note B4, and a quarter note C5. The notes are grouped in pairs with slurs and ties.

Sax B. 35



Musical staff for Sax B., measures 35-38. The staff is in treble clef with a key signature of two sharps. It begins with a quarter note G4, followed by a quarter note A4, a quarter note B4, and a quarter note C5. The notes are grouped in pairs with slurs and ties. A fermata is placed over the final measure.

Sax B. 41



Musical staff for Sax B., measures 41-44. The staff is in treble clef with a key signature of two sharps. It begins with a quarter note G4, followed by a quarter note A4, a quarter note B4, and a quarter note C5. The notes are grouped in pairs with slurs and ties. A fermata is placed over the final measure.

Sax B. 53



Musical staff for Sax B., measures 53-56. The staff is in treble clef with a key signature of two sharps. It begins with a quarter note G4, followed by a quarter note A4, a quarter note B4, and a quarter note C5. The notes are grouped in pairs with slurs and ties.

Sax B. 59



Musical staff for Sax B., measures 59-62. The staff is in treble clef with a key signature of two sharps. It begins with a quarter note G4, followed by a quarter note A4, a quarter note B4, and a quarter note C5. The notes are grouped in pairs with slurs and ties.

Art of the Fugue

2  
65

Sax B.



70

Sax B.



76

Sax B.



81

Sax B.

