



Serge Robert

Arranger, Interpreter

Canada, Mont Saint-Grégoire

About the artist

Maths teacher retired;
guitarist and luthier amateur.

Personal web: <http://www.guitares-robert.ca>

About the piece



Title:	Concerto italien [BWV 971]
Composer:	Bach, Johann Sebastian
Arranger:	Robert, Serge
Licence:	Domaine public
Publisher:	Robert, Serge
Instrumentation:	2 Guitars (Duet)
Style:	Classical

Serge Robert on [free-scores.com](http://www.free-scores.com)

<http://www.free-scores.com/Download-PDF-Sheet-Music-serge-robert.htm>

- Contact the artist
- Write feedback comments
- Share your MP3 recording
- Web page access with QR Code :



Concerto italien

I

Johann Sebastian Bach

Guitare 1

The image displays a musical score for guitar 1, consisting of ten staves of music. The score is written in treble clef with a key signature of one flat (B-flat) and a time signature of 2/4. The music is characterized by intricate sixteenth-note patterns and various articulations. The staves are numbered 9, 15, 20, 26, 33, 39, 45, 50, and 59, indicating the starting measure of each line. The notation includes slurs, accents, and dynamic markings such as *mf* and *ff*. The piece concludes with a final cadence on the tenth staff.

66



73



78



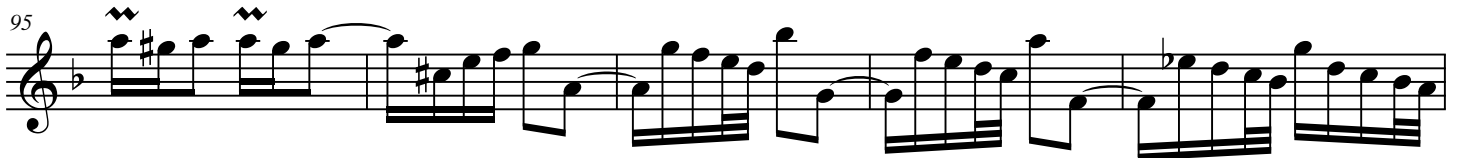
83



89



95



100



107



116



124



130



136 *tr*

144

151

157

163

172

178

183

189

II

Musical score for section II, measures 3-23. The score is written in treble clef, 3/4 time, and B-flat major. It features a complex melodic line with many sixteenth and thirty-second notes, often beamed together. Measure 3 begins with a triplet of eighth notes. Measures 6, 9, 12, 15, 17, 19, 21, and 23 contain dense sixteenth-note passages. Various articulations such as accents and slurs are used throughout. The key signature has one flat (B-flat), and the time signature is 3/4.

A musical score for guitar, consisting of ten staves of music. The score is written in a single system with a key signature of one flat (B-flat) and a common time signature (C). The music is primarily composed of eighth and sixteenth notes, often beamed together in groups. There are several instances of triplets and slurs. The score begins at measure 25 and ends at measure 48. The notation includes various accidentals (sharps, flats, naturals) and dynamic markings such as *tr* (trills) and *tr* (trills) with a flourish. The piece concludes with a final chord and a double bar line.

III

Presto

⑥=D



2
52



57



63



68



74



79



84



89



94

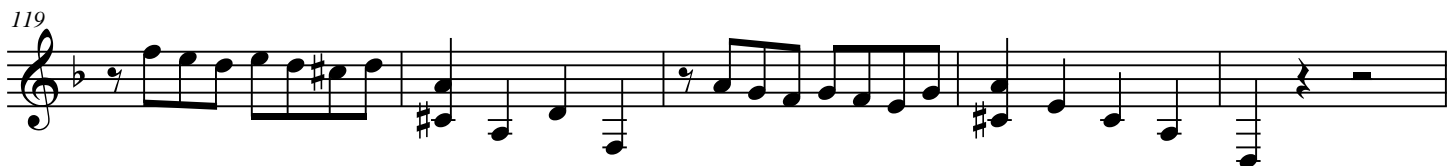


99



104





4
163



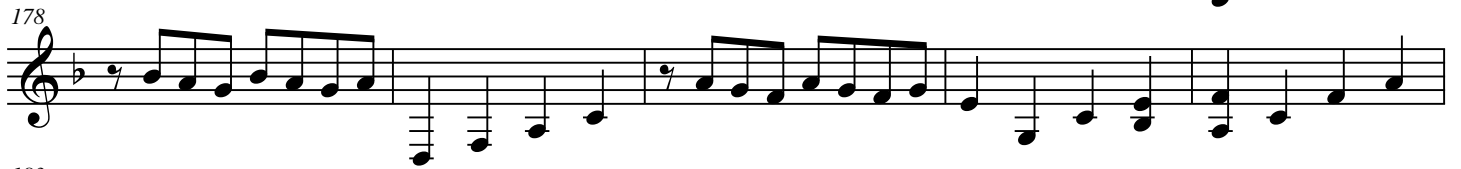
168



173



178



183



188



193



198



204



210

