

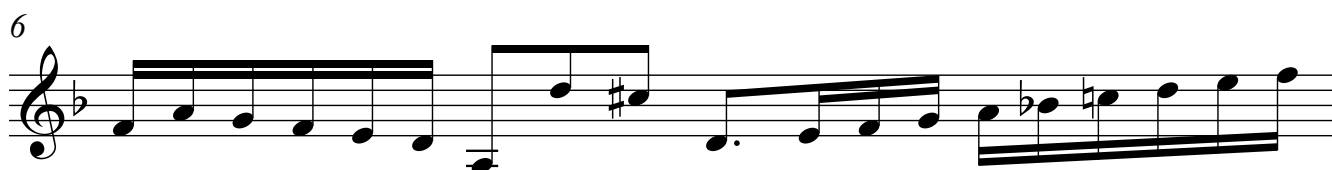
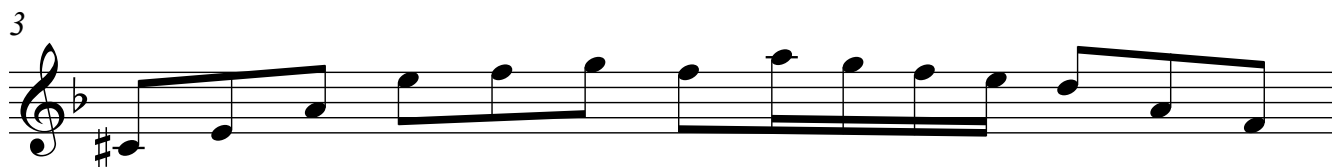
BWV - 1004 SONATA

4.- GIGA

ARMONIZADA POR LUIS ALVAREZ

J.S. BACH

$\text{♩} = 80$



2

7

8

9

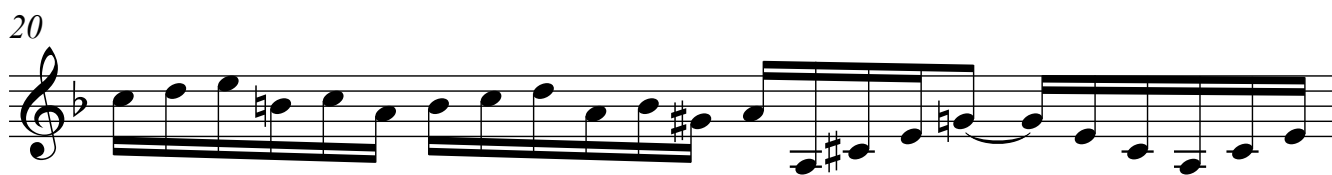
10

11

12

13

Detailed description: The image displays seven staves of musical notation, each containing a single measure of music. The notation is in treble clef with a key signature of one flat (B-flat). The first staff (measure 7) features a complex rhythmic pattern with sixteenth and thirty-second notes. The second staff (measure 8) shows a sequence of eighth notes. The third staff (measure 9) continues with eighth notes. The fourth staff (measure 10) includes sixteenth notes and a triplet. The fifth staff (measure 11) features a sequence of eighth notes with a sharp sign above the first note. The sixth staff (measure 12) shows a sequence of eighth notes. The seventh staff (measure 13) features a sequence of eighth notes.



4

21

22

24

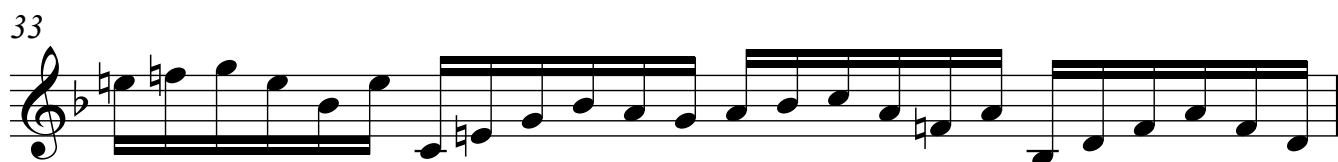
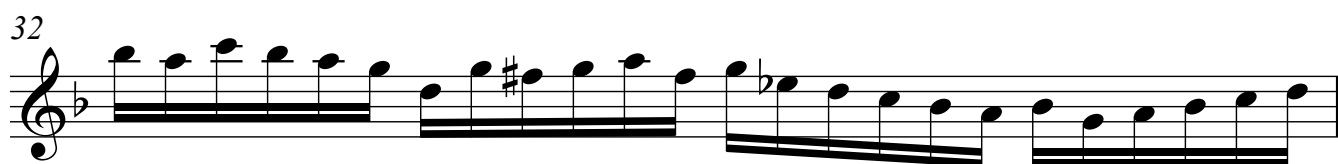
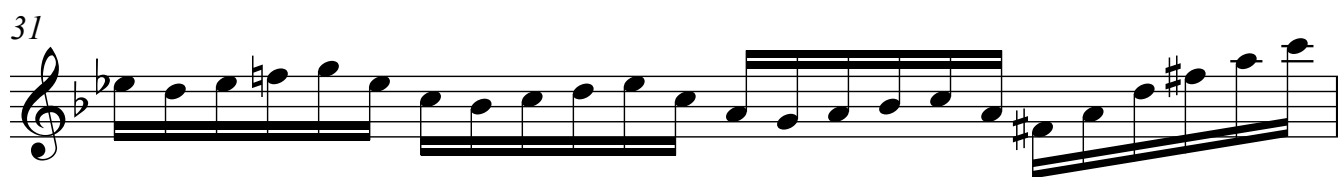
25

26

27

28

The image displays seven staves of musical notation for a violin piece. Each staff begins with a treble clef and a key signature of one flat (B-flat). The first staff (measures 21-23) includes a repeat sign at the end. The second staff (measure 22) starts with a repeat sign. The third staff (measure 24) continues the melodic line. The fourth staff (measure 25) features a double bar line. The fifth staff (measure 26) shows a change in the bass line. The sixth staff (measure 27) and seventh staff (measure 28) consist of eighth-note patterns. The page number '4' is located at the top left.



6

36

37

38

39

40

41

42

Detailed description: This image shows seven staves of musical notation for a violin sonata. Each staff begins with a measure number (36, 37, 38, 39, 40, 41, 42) and contains a single line of music. The notation includes treble clefs, a key signature of one flat (B-flat), and various rhythmic values such as eighth and sixteenth notes. The music features complex rhythmic patterns, including triplets and sixteenth-note runs. The final measure of the seventh staff (measure 48) ends with a double bar line and repeat dots.