



# Mike Magatagan

United States (USA), SierraVista

## Aria: "Die Schätzbarkeit der weiten Erden" for Harp (BWV 204 No 4) Bach, Johann Sebastian

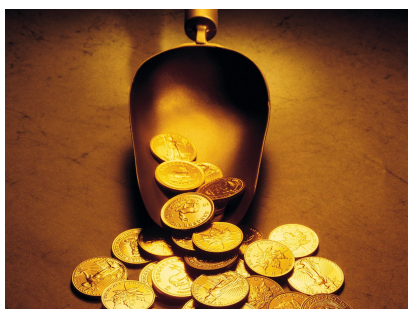
### About the artist

I'm a software engineer. Basically, I'm computer geek who loves to solve problems. I have been developing software for the last 25+ years but have recently rekindled my love of music.

Many of my scores are posted with individual parts and matching play-along however, this is not always practical. If you would like individual parts to any of my scores or other specific tailoring, please contact me directly and I will try to accommodate your specific needs.

**Artist page :** <https://www.free-scores.com/Download-PDF-Sheet-Music-magataganm.htm>

### About the piece



<b>Title:</b>	Aria: "Die Schätzbarkeit der weiten Erden" for Harp [BWV 204 No 4]
<b>Composer:</b>	Bach, Johann Sebastian
<b>Arranger:</b>	Magatagan, Mike
<b>Copyright:</b>	Public Domain
<b>Publisher:</b>	Magatagan, Mike
<b>Instrumentation:</b>	Harp
<b>Style:</b>	Baroque
<b>Comment:</b>	One of Bach's lesser-known cantatas, this work was evidently written in 1726 or 1727 for the regular concerts of the Collegium Musicum in Leipzig. This was an organization associated with the University of Leipzig that gave concerts during the summer months at an outdoor coffee garden and in other seasons in a coffee house. Bach was its musical director. It is an unusually demanding solo cantata for soprano, with orchestra of strings, flute, ob... (more online)

### Mike Magatagan on [free-scores.com](https://www.free-scores.com)



- listen to the audio
- share your interpretation
- comment
- contact the artist



# Aria: "Die Schätzbarkeit der weiten Erden"

J.S. Bach (BWV 204 No. 4)

Arranged for Harp by Mike Magatagan 2014

Andante  
mf

Harp

4

7

10

13

16

3

Measures 19-21 of the harp arrangement. The right hand features a melodic line with eighth and sixteenth notes, while the left hand provides a steady bass accompaniment with eighth notes.

Measures 22-24. The right hand continues with a more active melodic pattern, including some sixteenth-note runs. The left hand maintains a consistent eighth-note accompaniment.

Measures 25-27. The right hand has a melodic line with some grace notes and slurs. The left hand accompaniment remains consistent with eighth notes.

Measures 28-30. The right hand features a melodic line with eighth-note patterns. The left hand accompaniment continues with eighth notes.

Measures 31-33. The right hand has a melodic line with some grace notes and slurs. The left hand accompaniment includes some rests and eighth notes.

Measures 34-36. The right hand features a melodic line with eighth-note patterns. The left hand accompaniment continues with eighth notes.

Measures 37-39 of the harp arrangement. The music is in G minor (one flat) and 3/4 time. Measure 37 features a treble clef with a melodic line of eighth notes and a bass clef with a steady eighth-note accompaniment. Measure 38 continues the melodic development. Measure 39 concludes with a final chord in the treble clef.

Measures 40-42. Measure 40 shows a more active treble clef with sixteenth-note patterns. Measure 41 continues this texture. Measure 42 features a melodic phrase in the treble clef and a bass clef accompaniment.

Measures 43-45. Measure 43 has a treble clef with a melodic line and a bass clef accompaniment. Measure 44 continues the melodic line. Measure 45 features a melodic phrase in the treble clef and a bass clef accompaniment.

Measures 46-48. Measure 46 has a treble clef with a melodic line and a bass clef accompaniment. Measure 47 continues the melodic line. Measure 48 features a melodic phrase in the treble clef and a bass clef accompaniment.

Measures 49-51. Measure 49 has a treble clef with a melodic line and a bass clef accompaniment. Measure 50 continues the melodic line. Measure 51 features a melodic phrase in the treble clef and a bass clef accompaniment.

Measures 52-54. Measure 52 has a treble clef with a melodic line and a bass clef accompaniment. Measure 53 continues the melodic line. Measure 54 features a melodic phrase in the treble clef and a bass clef accompaniment.

Measures 55-57 of the harp arrangement. Measure 55 features a triplet of eighth notes in the right hand. The piece is in G major and 3/4 time.

Measures 58-60. The right hand continues with a melodic line, and the left hand provides a steady accompaniment.

Measures 61-63. The right hand has a melodic phrase with a fermata over the final note. The left hand continues with a simple accompaniment.

Measures 64-66. The right hand features a more complex melodic line with some grace notes. The left hand accompaniment remains consistent.

Measures 67-69. The right hand has a melodic phrase with a fermata. The left hand accompaniment continues.

Measures 70-72. The right hand has a melodic phrase with a fermata. The left hand accompaniment continues.

Measures 73-75 of the harp arrangement. Measure 73 features a complex sixteenth-note pattern in the right hand and a simple eighth-note bass line. Measure 74 includes a trill in the right hand. Measure 75 shows a continuation of the sixteenth-note pattern in the right hand.

Measures 76-78. Measure 76 has a sixteenth-note pattern in the right hand and a simple bass line. Measure 77 features a trill in the right hand. Measure 78 continues the sixteenth-note pattern in the right hand.

Measures 79-81. Measure 79 has a sixteenth-note pattern in the right hand and a simple bass line. Measure 80 features a trill in the right hand. Measure 81 continues the sixteenth-note pattern in the right hand.

Measures 82-84. Measure 82 has a sixteenth-note pattern in the right hand and a simple bass line. Measure 83 features a trill in the right hand. Measure 84 continues the sixteenth-note pattern in the right hand.

Measures 85-87. Measure 85 has a sixteenth-note pattern in the right hand and a simple bass line. Measure 86 features a trill in the right hand. Measure 87 continues the sixteenth-note pattern in the right hand.

Measures 88-90. Measure 88 has a sixteenth-note pattern in the right hand and a simple bass line. Measure 89 features a trill in the right hand and a *rit.* marking. Measure 90 ends with a final chord in the right hand and a simple bass line.