



Mike Magatagan

United States (USA), SierraVista

Intrada XII: "Ein feste Burg" for Wind Sextet Altenburg, Michael

About the artist

I'm a software engineer. Basically, I'm computer geek who loves to solve problems. I have been developing software for the last 25+ years but have recently rekindled my love of music.

Many of my scores are posted with individual parts and matching play-along however, this is not always practical. If you would like individual parts to any of my scores or other specific tailoring, please contact me directly and I will try to accommodate your specific needs.

Artist page : <https://www.free-scores.com/Download-PDF-Sheet-Music-magataganm.htm>

About the piece



Title: Intrada XII: "Ein feste Burg" for Wind Sextet
Composer: Altenburg, Michael
Arranger: Magatagan, Mike
Copyright: Public Domain
Publisher: Magatagan, Mike
Instrumentation: Sextet
Style: Renaissance
Comment:

Michael Altenburg (1584 – 1640) was a German theologian and composer. He was born at Alach, near Erfurt. He began attending school in Erfurt in 1590; he began studying theology at the University of Erfurt in 1598, and was awarded a bachelor's degree in 1599 and a master's in 1603. From 1600 he taught at the Reglerschule in Erfurt; he was Kantor at St. Andreas from 1601 and rector of the school at St. Andreas in Erfurt from 1603. In 1609 he quit t... (more online)

Mike Magatagan on [free-scores.com](https://www.free-scores.com)



- listen to the audio
- share your interpretation
- comment
- contact the artist



Intrada XII

"Ein feste Burg"

Michael Altenburg (1584 - 1640)

Interpretation for Wind Sextet by Mike Magatagan 2021

Andante ($\text{♩} = 55$)

Flute *mf*

Oboe *mf*

B \flat Clarinet *mf*

English Horn *mf*

Horn in F *mf*

Bassoon *mf*

7

Fl

Ob

Cl

Eh

Fh

Ba

16

Fl
Ob
Cl
Eh
Fh
Ba

This system of musical notation covers measures 16 through 20. It features six staves: Flute (Fl), Oboe (Ob), Clarinet (Cl), English Horn (Eh), French Horn (Fh), and Bassoon (Ba). The key signature is one sharp (F#). The music is written in a common time signature. Measures 16 and 17 contain complex rhythmic patterns with eighth and sixteenth notes. Measures 18 and 19 show a transition to a more melodic style with quarter and half notes. Measure 20 concludes the system with a final cadence.

21

Fl
Ob
Cl
Eh
Fh
Ba

This system of musical notation covers measures 21 through 25. It features the same six staves as the previous system. The music continues with a melodic line in the flute and oboe, supported by the woodwinds. Measure 21 starts with a rest for the flute and oboe. Measures 22 and 23 show a steady melodic progression. Measure 24 features a long, sustained note in the French horn. Measure 25 ends with a final cadence, marked by a double bar line and repeat dots.

26

Fl
Ob
Cl
Eh
Fh
Ba

This musical score covers measures 26 through 32. It features six staves: Flute (Fl), Oboe (Ob), Clarinet (Cl), English Horn (Eh), French Horn (Fh), and Bassoon (Ba). The key signature is one sharp (F#). The Flute part begins with a trill (tr) in measure 26. The Oboe and Bassoon parts have melodic lines with various rhythmic values. The Clarinet and English Horn parts provide harmonic support with sustained notes and some rhythmic patterns. The French Horn part is mostly silent in the first few measures before entering with a sustained note.

33

Fl
Ob
Cl
Eh
Fh
Ba

This musical score covers measures 33 through 39. It features the same six staves as the previous system. The Flute part continues its melodic line with a trill in measure 33. The Oboe part has a melodic line with a trill in measure 34. The Clarinet part has a melodic line with a trill in measure 35. The English Horn part has a melodic line with a trill in measure 36. The French Horn part has a melodic line with a trill in measure 37. The Bassoon part has a melodic line with a trill in measure 38.

41

Fl
Ob
Cl
Eh
Fh
Ba

47

Detailed description: This system of music covers measures 41 through 47. It features six staves: Flute (Fl), Oboe (Ob), Clarinet (Cl), English Horn (Eh), French Horn (Fh), and Bassoon (Ba). The key signature is one sharp (F#). The music is written in a common time signature. The flute part has a trill-like flourish in measure 45. The bassoon part has a trill-like flourish in measure 46. The music concludes with a double bar line at the end of measure 47.

48

Fl
Ob
Cl
Eh
Fh
Ba

rit.

Detailed description: This system of music covers measures 48 through 54. It features the same six staves as the previous system. The key signature remains one sharp (F#). The music is written in a common time signature. A 'rit.' (ritardando) marking is placed above the flute staff in measure 48. The music concludes with a double bar line at the end of measure 54.



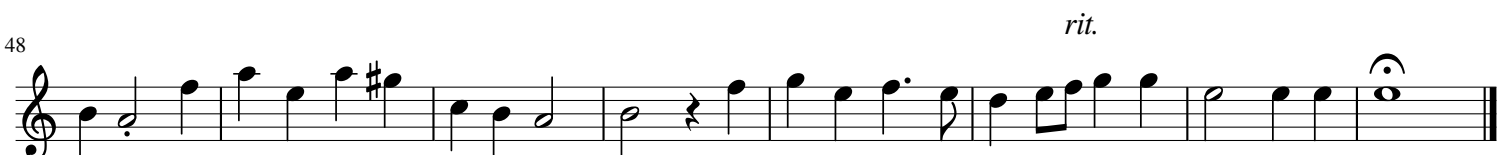
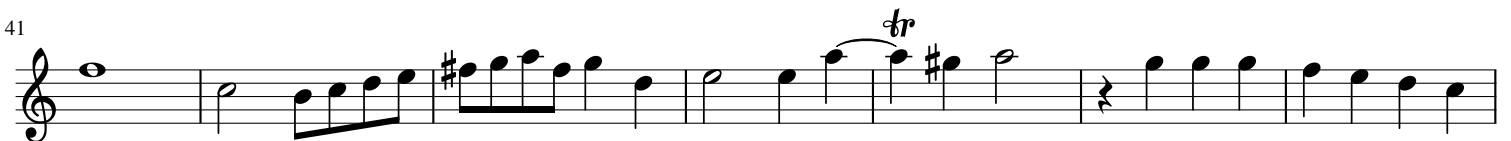
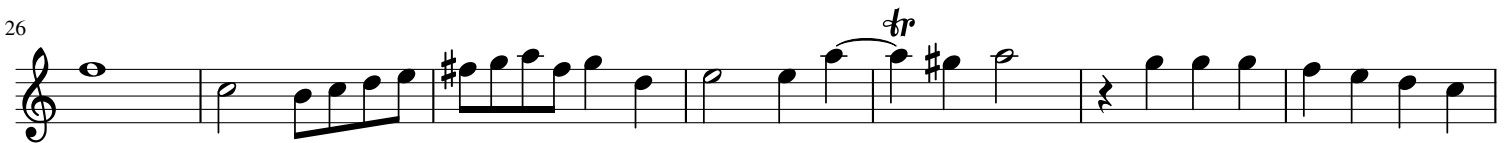
Intrada XII

"Ein feste Burg"

Michael Altenburg (1584 - 1640)

Interpretation for Wind Sextet by Mike Magatagan 2021

Andante ($\text{♩} = 55$)





Intrada XII

"Ein feste Burg"

Michael Altenburg (1584 - 1640)

Interpretation for Wind Sextet by Mike Magatagan 2021

Andante ($\text{♩} = 55$)





Intrada XII

"Ein feste Burg"

Michael Altenburg (1584 - 1640)

Interpretation for Wind Sextet by Mike Magatagan 2021

Andante ($\text{♩} = 55$)





Intrada XII

"Ein feste Burg"

Michael Altenburg (1584 - 1640)

Interpretation for Wind Sextet by Mike Magatagan 2021

Andante ($\text{♩} = 55$)





Intrada XII

"Ein feste Burg"

Michael Altenburg (1584 - 1640)

Interpretation for Wind Sextet by Mike Magatagan 2021

Andante ($\text{♩} = 55$)

4



10



16



26



33



41



48

rit.



