



Gustav Anderson

United States (USA), Norwalk

DONIZETTI SONATA IN F

About the artist

A ROSE BY ANY OTHER NAME.....Hello...in order to keep my sheet music separate from my MP3 music on Freescores I, LEONARD ANDERSON, have established this second account...GUSTAV is my middle name.....to hear my MP3's click on LEONARD ANDERSON under INTERPRETER

Qualification: BA, MA, Ed.D, Ph.D in music and education

Artist page : <https://www.free-scores.com/Download-PDF-Sheet-Music-gustavanderson.htm>

About the piece



Title:	DONIZETTI SONATA IN F
Composer:	Anderson, Gustav
Arranger:	Anderson, Gustav
Copyright:	Copyright © Gustav Anderson
Publisher:	Anderson, Gustav
Instrumentation:	Oboe
Style:	Classical
Comment:	Performed on a C-Melody Saxophone

Gustav Anderson on [free-scores.com](https://www.free-scores.com)



- listen to the audio
- share your interpretation
- comment
- contact the artist

SONATE

Gaetano Donizetti (1797-1848)

Herausgegeben von Raymond Meylan

Andante

9

14

21

26

32

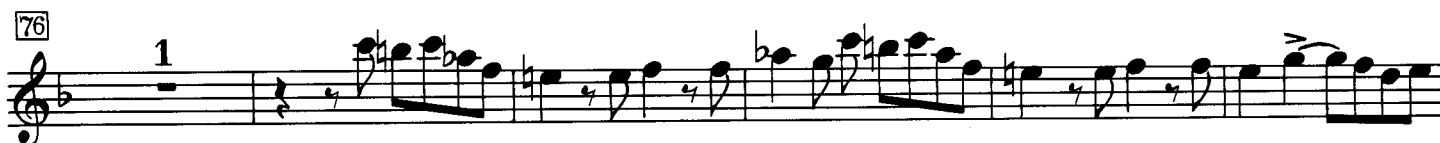
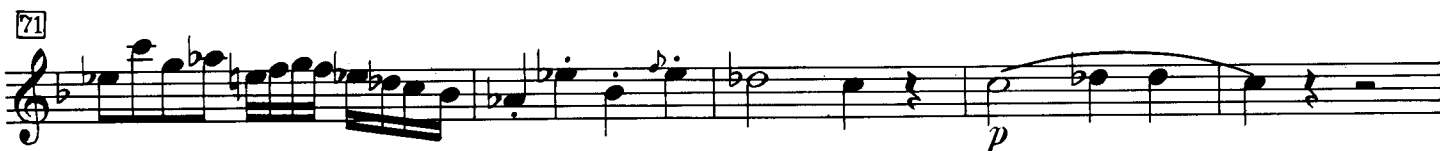
40

44

48

53

Oboe



Oboe

137 Pno.

144

152 5 *f*

164 1

171 4 *p*

182 7

196 1 *p*

203 1 *b*

211 15

233 Pno. 17 Pno. *p* *f*

256 1

264

The image shows a musical score for Oboe and Piano (Pno.). The Oboe part is written on a single staff in G major (one sharp) and 4/4 time. It consists of ten lines of music, with measure numbers 137, 144, 152, 164, 171, 182, 196, 203, 211, and 233 marked at the beginning of each line. The Piano part is indicated by 'Pno.' and appears in measures 137, 233, and 256. Dynamics include *f* (forte) at measure 152, *p* (piano) at measures 171 and 196, and *p* and *f* at measure 233. Fingerings (1, 4, 5, 7) are indicated above certain notes. The score ends at measure 264.

SONATE

Gaetano Donizetti (1797-1848)

Herausgegeben von Raymond Meylan

Andante

Oboe

Klavier

p

4

8

12

16

p *ff*

21

f *p*

25

f

28

p *ff*

32

f

35



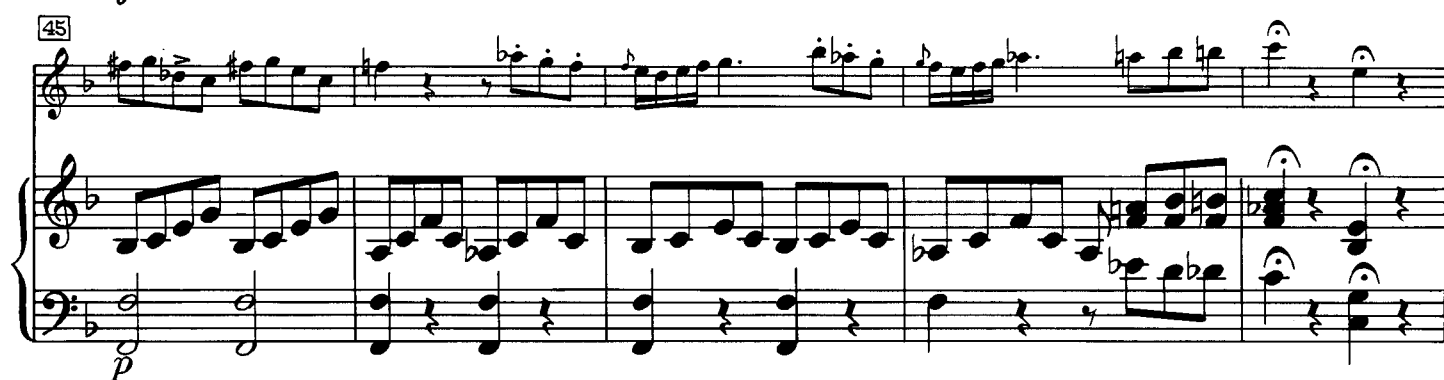
38



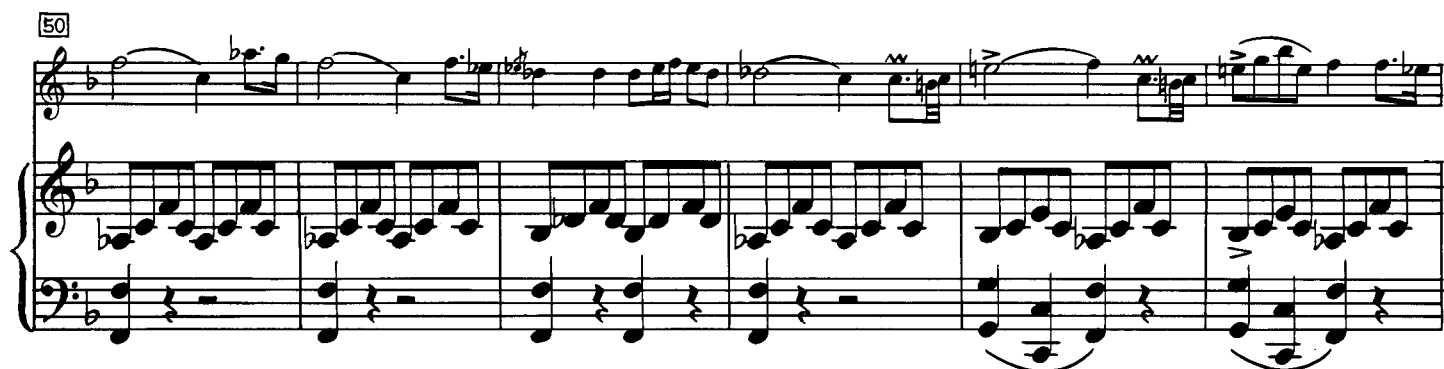
41



45



50



56

61

66

72

76

82

88

93 *Allegro*

98

104

110

p

116

122

129

134

140

147

154

161

168

176

p

f

p

182

p

p

189

p

196

p

f

p

202

f

p

209

216

222

227

232

239

Measures 239-245. The score is in 3/4 time. The right hand (treble clef) has a melodic line with eighth and sixteenth notes, often beamed together. The left hand (bass clef) plays a steady eighth-note accompaniment. The key signature has one sharp (F#).

246

Measures 246-252. The right hand continues the melodic line. The left hand accompaniment changes in measure 250 to a more active pattern. A piano (*p*) dynamic marking appears in measure 251.

253

Measures 253-258. The right hand has a more active melodic line. The left hand accompaniment is a steady eighth-note pattern. Dynamics include *cresc.* (crescendo) in measure 253, *f* (forte) in measures 254, 255, and 257, and *fp* (fortissimo piano) in measure 256.

259

Measures 259-264. The right hand has a melodic line with some rests. The left hand accompaniment is a steady eighth-note pattern. Dynamics include *fp* (fortissimo piano) in measures 259 and 261, and *f* (forte) in measures 260, 262, and 263.

265

Measures 265-271. The right hand has a melodic line with some rests. The left hand accompaniment is a steady eighth-note pattern. The piece ends with a double bar line in measure 271.