



Alexandre Pappas

Greece, athenes

FUNNY STREET THEATER

About the artist

Alexandros Pappas is a classically trained composer based in Athens, Greece. He holds a Bachelor degree of arts in music composition; he studied Composition and harmony with Prof. Nestor Taylor and many other respected teachers. He has composed several orchestral pieces for audiovisual productions and music to accompany poetic collections. In 2007 he received the 2nd prize in the UNESCO composition challenge (Greece) and in 2008, 2009, 2010, & 2011, he was awarded with several prizes in the international Fundulis Composition Contest in Bolos-Greece. His collaborations include a world premiere performance by the Sphere Ensemble, in Brazil, as well as performances by the Nigun Quartet in Calabria, Italy. He has released several CD s with his works on AMAZON, and selections of his music may be heard also on SOUNDCLLOUD.(mymusicworld)

Qualification: AUTODIDACTE
BACHELOR OF ARTS IN MUSIC-COMPOSITION/IAA/

Artist page : <https://www.free-scores.com/Download-PDF-Sheet-Music-alexandre-pappas.htm>

About the piece



Title: FUNNY STREET THEATER
Composer: Pappas, Alexandre
Copyright: Alexandre Pappas © All rights reserved
Publisher: Pappas, Alexandre
Style: Modern classical
Comment: A COMPO IN BAROQUE OR MEDIEVAL STYLE, FOR A IMAJINAIRY STREET THEATER. THE TEMPO IS ON YOUR CHOICE. HERE 120.

Alexandre Pappas on [free-scores.com](https://www.free-scores.com)



- listen to the audio
- share your interpretation
- comment
- contact the artist

THE FUNNY STREET THEATER

Score

ALEX.PAPPAS/26/12/11

ANIMATO

[Arranger]

Oboe

Clarinet in B \flat

Bassoon

Cello

This system contains the first five measures of the score. The Oboe part (treble clef) plays a melodic line with eighth and quarter notes. The Clarinet in B \flat (treble clef) is mostly silent, with a few notes in the fifth measure. The Bassoon (bass clef) and Cello (bass clef) play a low, sustained accompaniment with a few notes in the fifth measure. The time signature is common time (C).

Ob.

B \flat Cl.

Bsn.

Vc.

This system contains measures 6 through 10. The Oboe (treble clef) has a more active role with eighth and sixteenth notes. The Clarinet in B \flat (treble clef) and Bassoon (bass clef) play rhythmic accompaniment. The Violoncello (bass clef) plays a steady bass line. A rehearsal mark '6' is placed above the first measure of each part. The time signature is common time (C).

[Title]

2
11

Ob.

B♭ Cl.

Bsn.

Vc.

11

15

Ob.

B♭ Cl.

Bsn.

Vc.

15

20

Ob.

B \flat Cl.

Bsn.

Vc.

25

Ob.

B \flat Cl.

Bsn.

Vc.

[Title]

4
30

Ob.

B \flat Cl.

Bsn.

Vc.

30

35

Ob.

B \flat Cl.

Bsn.

Vc.

35

39

Ob.

B \flat Cl.

Bsn.

Vc.

43

Ob.

B \flat Cl.

Bsn.

Vc.

[Title]

6
48

Ob.

B \flat Cl.

Bsn.

48

Vc.

52

Ob.

B \flat Cl.

Bsn.

52

Vc.

56

Ob.

B \flat Cl.

Bsn.

Detailed description: This system contains measures 56 through 59. The Oboe (Ob.) part starts with a repeat sign at measure 56, followed by a melodic line of eighth notes. The B-flat Clarinet (B \flat Cl.) part has a repeat sign at measure 56 and a melodic line starting in measure 57. The Bassoon (Bsn.) part has a repeat sign at measure 56 and a melodic line starting in measure 57, featuring a long slur over measures 57 and 58.

56

Vc.

Detailed description: This system contains measure 56 for the Violoncello (Vc.) part. It features a repeat sign and a melodic line of eighth notes with a long slur extending across the measure.

60

Ob.

B \flat Cl.

Bsn.

Detailed description: This system contains measures 60 through 63. The Oboe (Ob.) part has a melodic line of eighth notes. The B-flat Clarinet (B \flat Cl.) part has a melodic line of eighth notes. The Bassoon (Bsn.) part has a melodic line of eighth notes. There are repeat signs at the beginning and end of the system.

60

Vc.

Detailed description: This system contains measure 60 for the Violoncello (Vc.) part. It features a repeat sign and a melodic line of eighth notes.

[Title]

8
64

Ob.

B♭ Cl.

Bsn.

Vc.

This system of music covers measures 8 to 64. It features four staves: Oboe (Ob.), B♭ Clarinet (B♭ Cl.), Bassoon (Bsn.), and Violoncello (Vc.). The Oboe part begins with a melodic line in the treble clef, marked with a fermata over the first measure. The woodwinds (B♭ Cl. and Bsn.) play a rhythmic accompaniment of eighth notes in the treble and bass clefs, respectively. The Violoncello part provides a harmonic foundation with a pattern of eighth notes in the bass clef. The key signature has one sharp (F#) and the time signature is 4/4.

68

Ob.

B♭ Cl.

Bsn.

Vc.

This system of music covers measures 68 to 72. It features the same four staves as the previous system. The Oboe part continues its melodic line, with a fermata over the first measure of this system. The woodwinds and Violoncello parts continue their respective rhythmic and harmonic patterns. The key signature and time signature remain the same as in the first system.

72

Ob.

B \flat Cl.

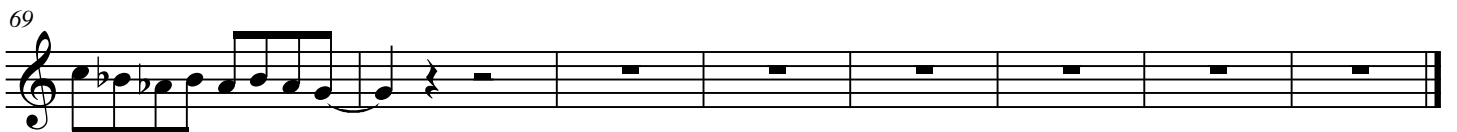
Bsn.

Vc.

72

[Title]

2



[Title]

2

50

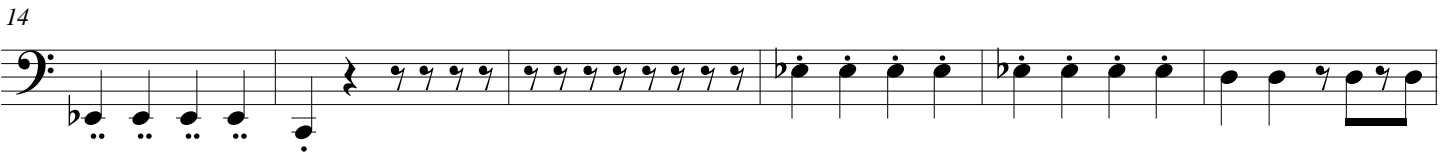
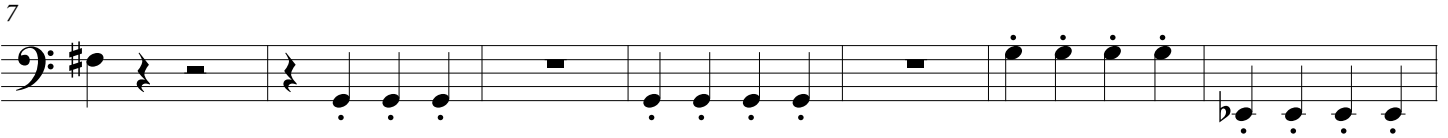
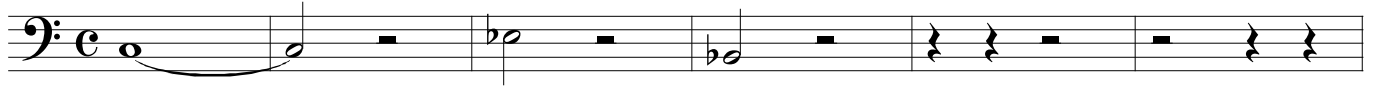
THE FUNNY STREET THEATER

Bassoon

ALEX.PAPPAS/26/12/11

ANIMATO

[Arranger]



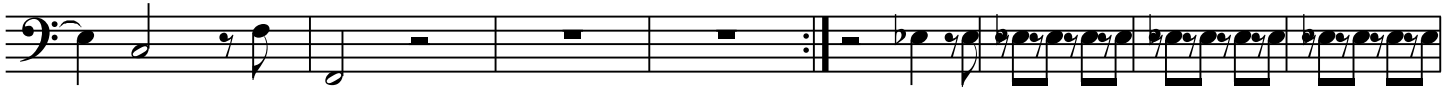
[Title]

2

51



59



67



74



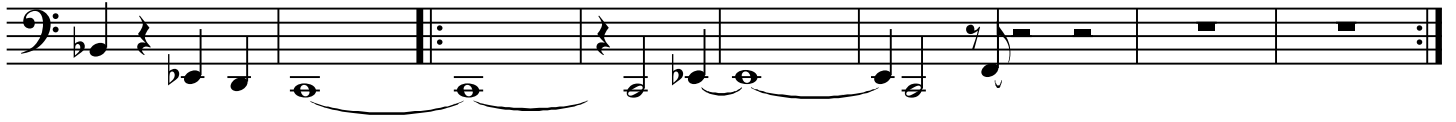
[Title]

2

49



54



63



72

