



Liana Alexandra

Roumania, Bucarest

ANCESTRALE

About the artist

Liana Alexandra Composer Born: May 27, 1947, Bucharest, Romania Married to Serban Nichifor, composer: http://www.free-scores.com/partitions_gratuites_serbannichifor.htm

Studies

1965-1971 - "Ciprian Porumbescu" University of Music, Bucharest, Composition Department. Awarded the special scholarship "George Enescu"

1974, 1978, 1980, 1984 - international courses of composition at Darmstadt, West Germany

1983 - an USIA stipendium in USA

PhD in Musicology

AT PRESENT: Master in music; Professor at the National University of Music of Bucharest, (teaching composition, orchestration and musical analyses), Member of Duo Intermedia and co-director of the NUOVA MUSICA CONSONANTE-LIVING MUSIC FOUNDATION INC.(U.S.A) Festival, with Serban Nichifor

Selected Works

Symphonic, vocal-symphonic and concert music, music for opera

Symphony I (1971)

Cantata for women's choir and... (more online)

Qualification: PROFESSOR DOCTOR IN COMPOSITION AND MUSICOLOGY

Associate: GEMA - IPI code of the artist : I-000402252-8

Artist page : <https://www.free-scores.com/Download-PDF-Sheet-Music-lianaalexandra.htm>

About the piece



Title: ANCESTRALE
Composer: Alexandra, Liana
Copyright: Copyright © Liana Alexandra
Instrumentation: Clarinet solo
Style: Contemporary

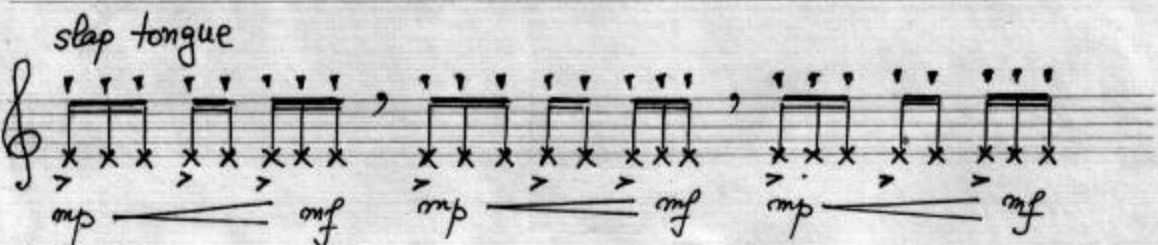
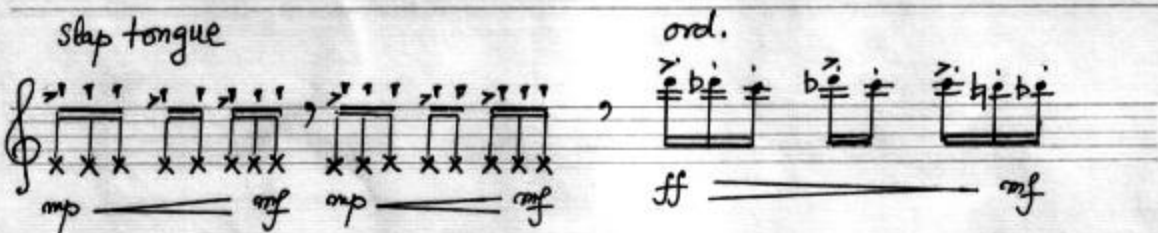
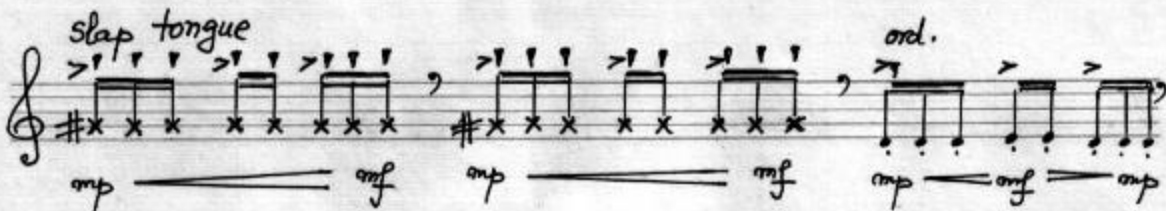
Liana Alexandra on [free-scores.com](https://www.free-scores.com)



- listen to the audio
- share your interpretation
- comment
- contact the artist

"ANCESTRALE"
for clarinetto in Sib
(1996)

LIANA ALEXANDRA



- 2 -

ord.

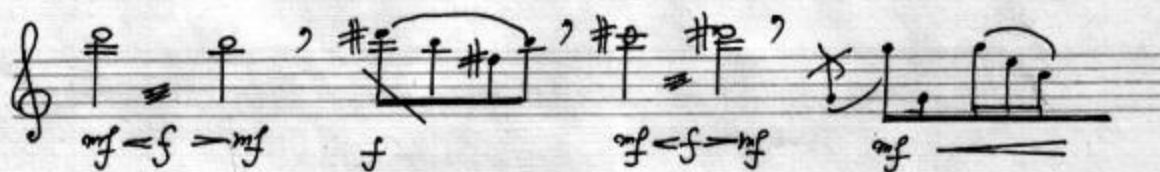
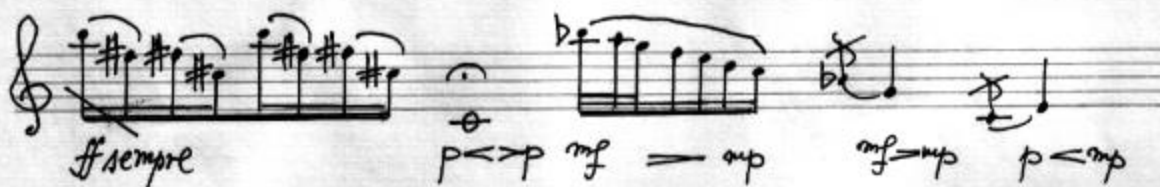
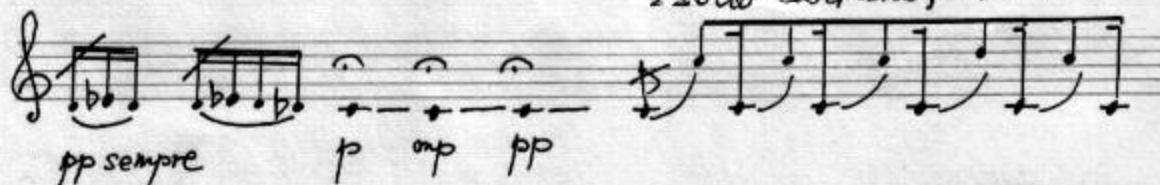


-3-

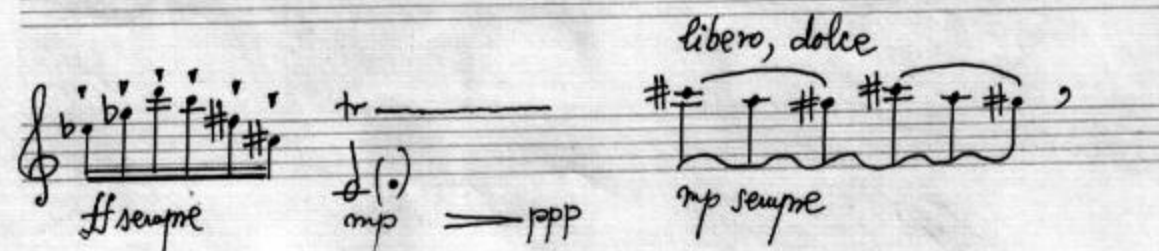
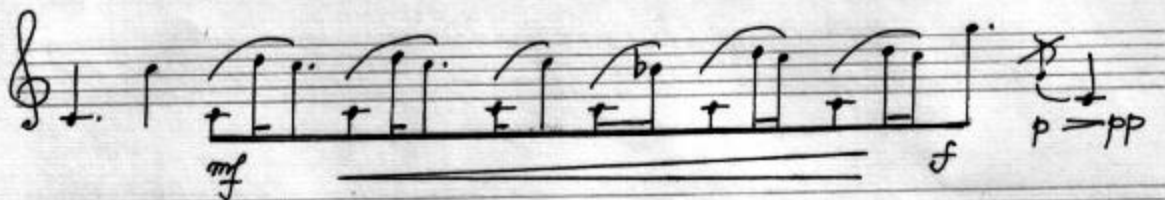


-4-

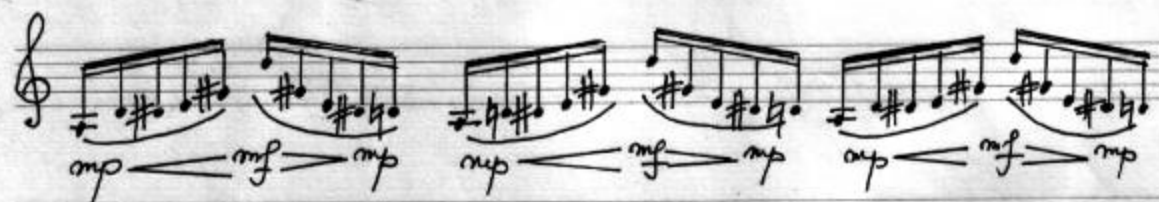
Molto cantabile, rubato



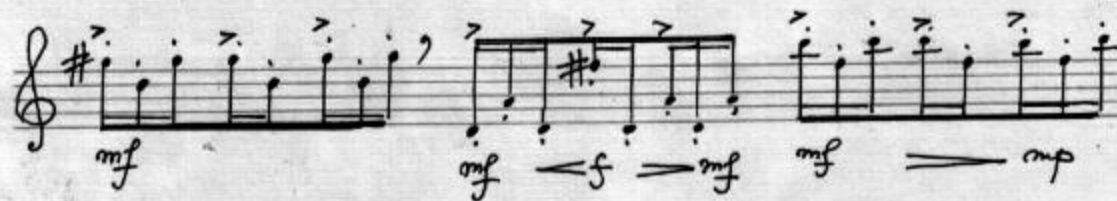
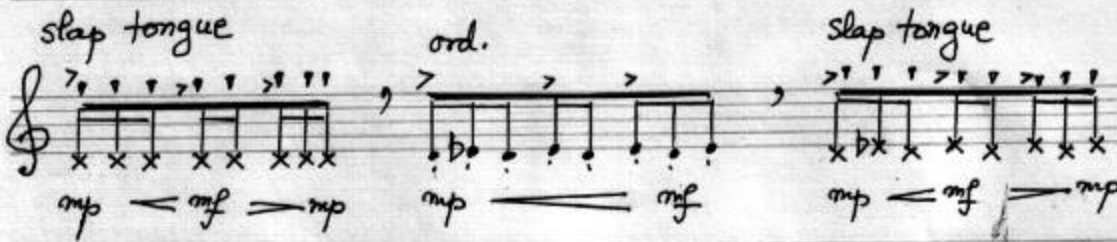
-5-



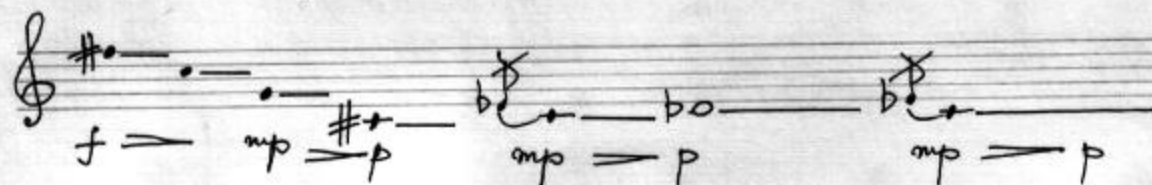
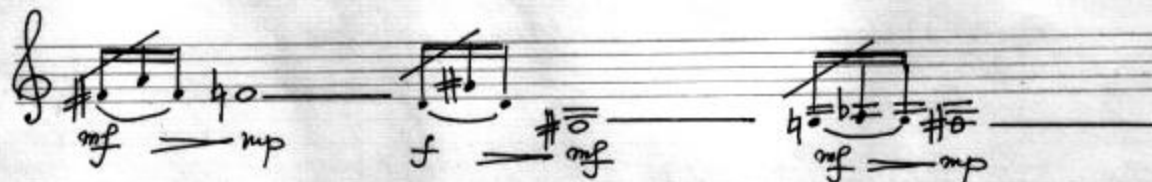
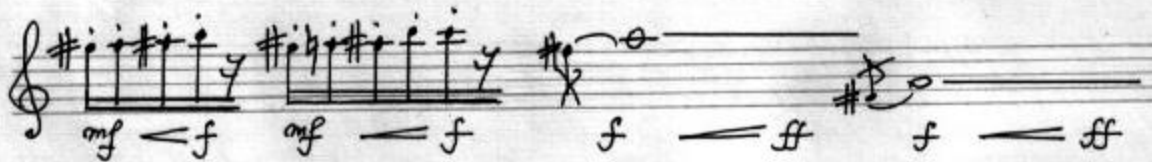
- 6 -

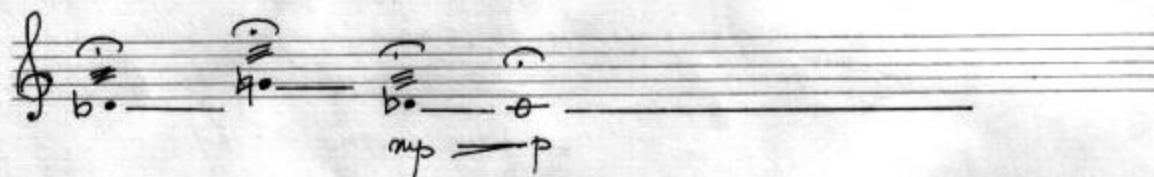


-7-



-8-





Handwritten musical notation for two measures of a piano exercise. The first measure is marked *mp sempre* and the second *f sempre*. Both measures feature a series of eighth notes on a treble clef staff, with dynamic markings and articulation symbols above the notes.



UCMR-ADA
1-072.969535
1-072.969537

Tele mobil: 0721-97 38 90