

Ach Frewlein zart.

Organ transcription

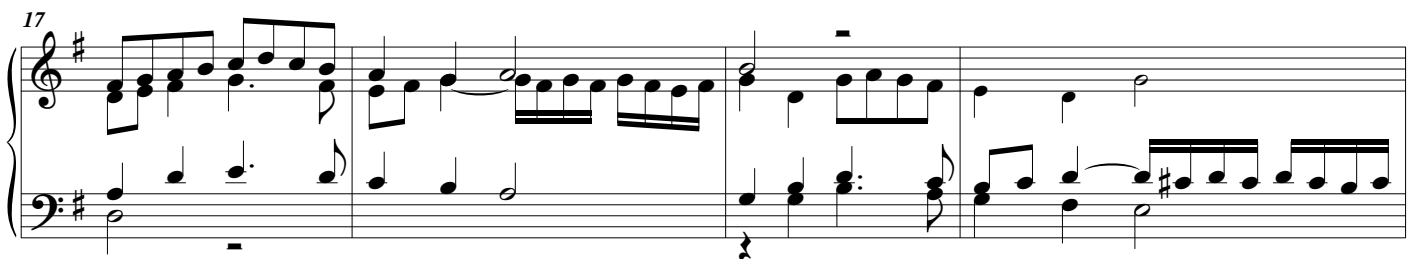
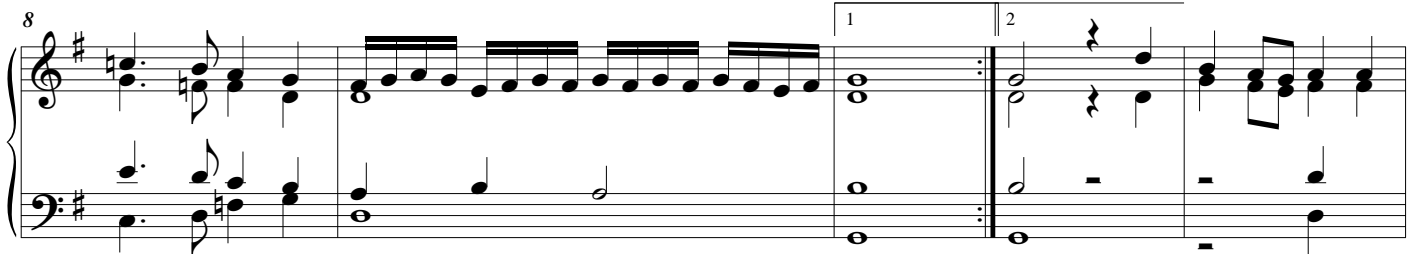
edited by
Maurizio Machella



Hans Johann Leo Hassler
(1564-1612)



aus dem "Lustgarten neuer teutscher Gesang"



21

System 1: Measures 21-26. Treble clef, key signature of one sharp (F#). The right hand features a melodic line with eighth and sixteenth notes, while the left hand provides a harmonic accompaniment with chords and single notes.

27

System 2: Measures 27-30. Continuation of the piece. The right hand has a more active melodic line with sixteenth-note runs, and the left hand features a prominent sixteenth-note accompaniment in the lower register.

31

System 3: Measures 31-34. The right hand continues with a melodic line, and the left hand has a more sparse accompaniment with chords and single notes.

35

System 4: Measures 35-38. The right hand has a melodic line with some grace notes, and the left hand features a steady accompaniment with chords.

39

System 5: Measures 39-42. The right hand has a melodic line with grace notes, and the left hand features a steady accompaniment with chords.

43

System 6: Measures 43-46. The right hand has a melodic line with grace notes, and the left hand features a steady accompaniment with chords.

47

System 7: Measures 47-50. The right hand has a melodic line with grace notes, and the left hand features a steady accompaniment with chords. The system ends with a double bar line and repeat signs.