

# WEST CALLING

## Impressioni Americane

Tuba

by ILIO VOLANTE

♩ = 110

A

Musical notation for section A, starting with a 4/4 time signature and a dynamic marking of *f*. The notation includes various rhythmic values and accents.

B

Musical notation for section B, continuing the piece with similar rhythmic patterns and dynamics.

C

Musical notation for section C, featuring a change in time signature to 6/4.

D

E

Musical notation for sections D and E, including a double bar line and a dynamic marking of *mp*.

### FOG IN SAN FRANCISCO

rall. ♩ = 90

Musical notation for 'FOG IN SAN FRANCISCO', featuring a 7/4 time signature, a dynamic marking of *p*, and a *mp* marking.

F

G

Musical notation for sections F and G, including a dynamic marking of *p* and an *accel.* marking.

accel.

♩ = 112

*fp*

*f*

Musical notation for section H, continuing the piece with a steady rhythmic pattern.

H

I

Musical notation for sections H and I, including a dynamic marking of *mf* and a final 4/4 time signature.

### THE SIGHT OF TWIN PEAKS

♩ = 116

J

Musical notation for 'THE SIGHT OF TWIN PEAKS', featuring a dynamic marking of *mf* and a consistent rhythmic pattern.

WEST CALLING - Ilio Volante - TUBA

K

L

M

N

1. 2. REDSKINS SHADOWS

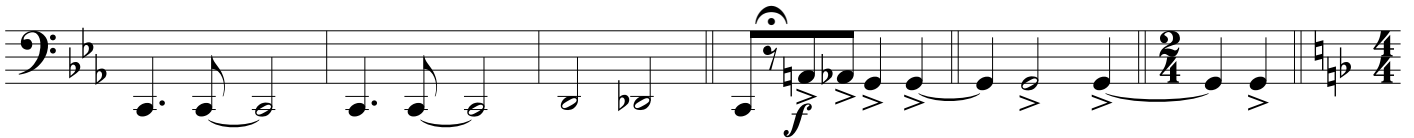
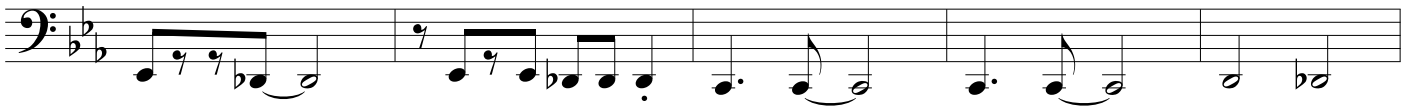
O

1. 2.

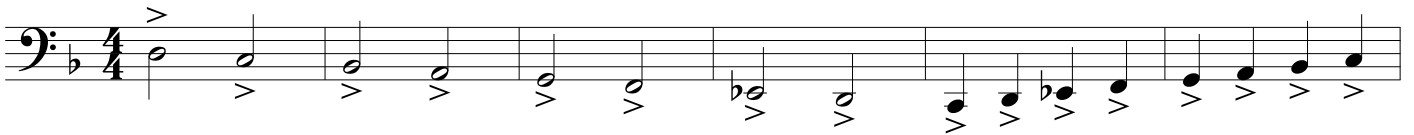
SACRAMENTO UNION

accel. ♩ = 130

WEST CALLING - Ilio Volante - TUBA

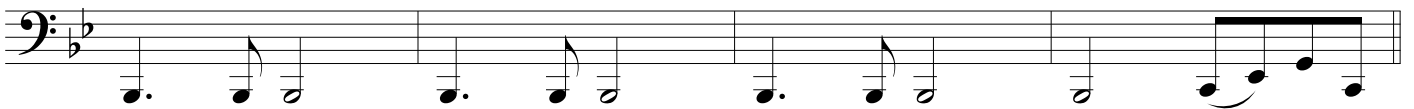
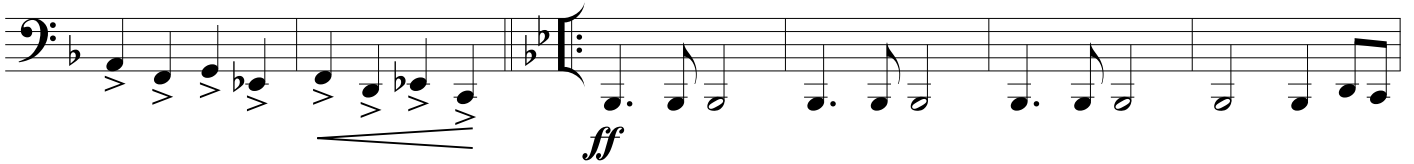


P



*rall.*

*a tempo*



Q

