

# SUNNY SUMMER

Bassoon

"Fantasia" for Wind Orchestra

Caribbean Tempo ♩ = 114

A

by ILIO VOLANTE

12

Section A consists of two staves of music. The first staff begins with a bass clef, a key signature of two flats (B-flat and E-flat), and a 4/4 time signature. It starts with a whole rest followed by a fermata. The music then proceeds with a series of eighth and quarter notes, some beamed together, and includes a dynamic marking of *mf* (mezzo-forte).

B

Section B consists of two staves of music. The first staff begins with a bass clef, a key signature of two flats, and a 4/4 time signature. It features a series of eighth and quarter notes with a dynamic marking of *mf*. A hairpin crescendo is shown below the staff. The second staff continues the melodic line with various note values and rests.

C

Section C consists of two staves of music. The first staff begins with a bass clef, a key signature of two flats, and a 4/4 time signature. It starts with a whole note, followed by a key signature change to three flats (B-flat, E-flat, and A-flat). The music then features a series of eighth and quarter notes with a dynamic marking of *mf*. A hairpin crescendo is shown below the staff. The second staff continues the melodic line with various note values and rests, including a triplet of eighth notes.

D

Section D consists of one staff of music. It begins with a bass clef, a key signature of three flats, and a 4/4 time signature. The music features a series of eighth and quarter notes with a dynamic marking of *mf*.

SUNNY SUMMER - Ilio Volante - BASSOON

E

Two staves of musical notation in bass clef, 3/4 time, and key signature of three flats (B-flat, E-flat, A-flat). The first staff begins with a whole note G2, followed by a quarter rest, another quarter rest, and a whole note G2. The second staff contains a series of eighth and quarter notes, including a triplet of eighth notes.

F

One staff of musical notation in bass clef, 3/4 time, and key signature of three flats. It features a sequence of eighth and quarter notes.

G

Three staves of musical notation in bass clef, 3/4 time, and key signature of three flats. The first staff includes a forte (*f*) dynamic marking and triplet markings. The second and third staves continue the melodic line with various note values and triplet markings.

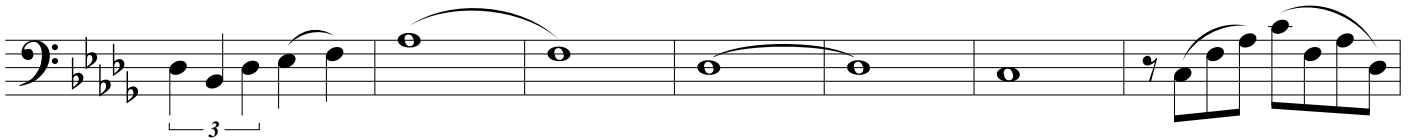
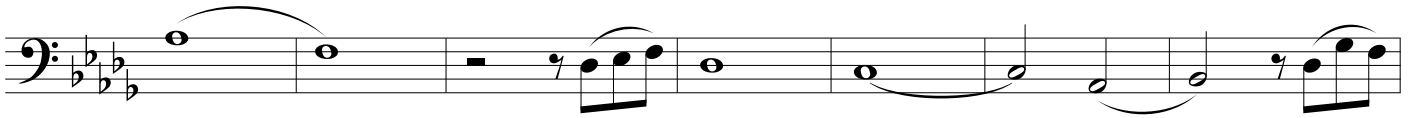
H

Three staves of musical notation in bass clef, 3/4 time, and key signature of three flats. The first staff features triplet markings. The second and third staves show a rhythmic pattern of eighth notes.

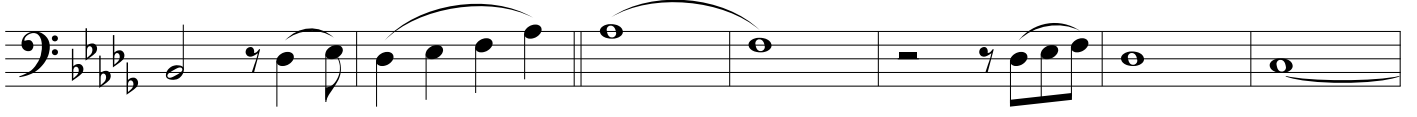
SUNNY SUMMER - Ilio Volante - BASSOON



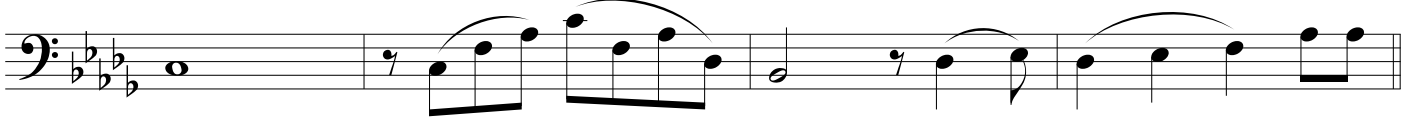
I



J



*rall.*



K

