

SULLE CIME BIANCHE

For Wind Orchestra

Horn in F 2

$\text{♩} = 110$

by ILIO VOLANTE

A

Musical notation for section A, starting with a treble clef and common time signature. It begins with a triplet of eighth notes, followed by a rest, and then a melodic line starting with a forte (*f*) dynamic. The notation includes various note values, rests, and slurs.

B

Musical notation for section B, continuing the melodic line. It features a mezzo-forte (*mf*) dynamic and ends with a piano (*p*) dynamic. A triplet of eighth notes is present at the end of the section.

Musical notation for section C, consisting of a continuous eighth-note accompaniment pattern.

C

Musical notation for section C, continuing the eighth-note accompaniment pattern.

Musical notation for section D, featuring a melodic line with a forte (*f*) dynamic. It includes triplet markings and various note values.

D

Musical notation for section D, continuing the melodic line with a piano (*p*) dynamic. It features triplet markings.

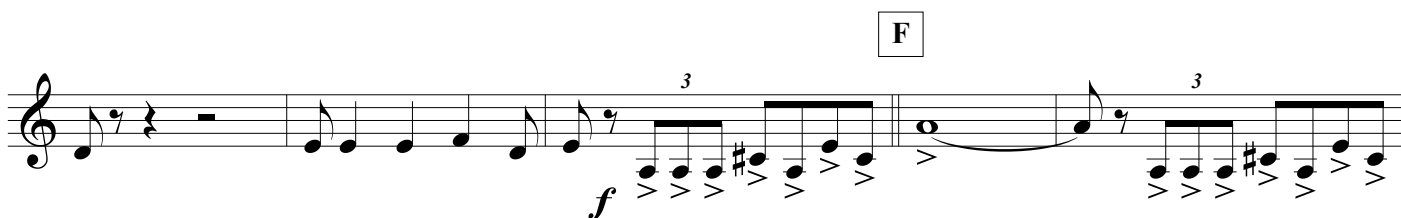
Musical notation for section D, continuing the melodic line with a piano (*p*) dynamic. It features triplet markings.

Musical notation for section D, continuing the melodic line with a piano (*p*) dynamic. It features triplet markings.

E

Musical notation for section E, consisting of a melodic line with a mezzo-forte (*mf*) dynamic.

SULLE CIME BIANCHE - Ilio Volante - HORN in F 2



G

