

# STRAIGHT CUT

Tromba in Sib 2  
(Trumpet in Bb 2)

by ILIO VOLANTE

♩ = 160

A

Musical notation for section A, starting with a fermata marked '8' and a dynamic marking of *f*. The notation is on a single staff in treble clef with a key signature of one sharp (F#).

B

Musical notation for section B, consisting of two staves. The first staff contains a melodic line with a fermata, and the second staff contains a bass line with accents. The key signature remains one sharp.

C

Musical notation for section C, consisting of two staves. The first staff contains a melodic line with a fermata, and the second staff contains a bass line with accents. The key signature remains one sharp.

D

Musical notation for section D, consisting of two staves. The first staff contains a melodic line with accents, and the second staff contains a bass line with accents. The key signature remains one sharp.

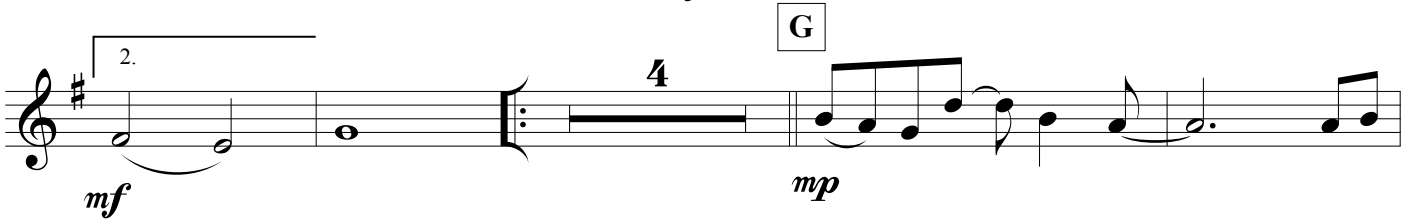
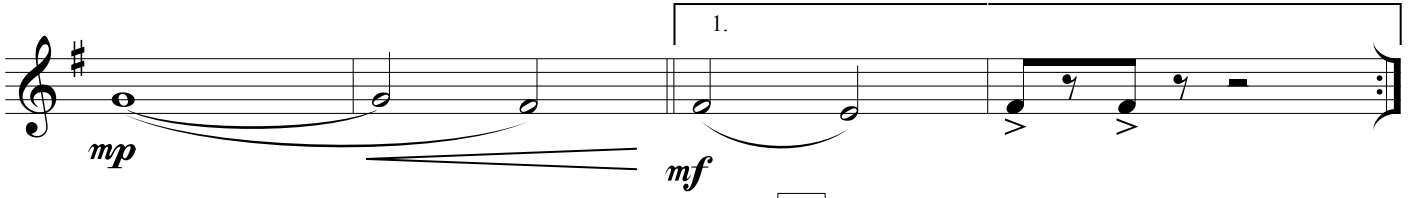
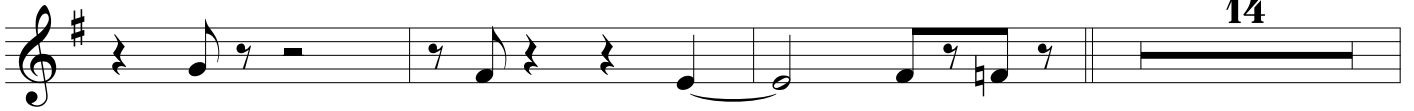
E

Musical notation for section E, consisting of two staves. The first staff contains a melodic line with a fermata marked '8' and a dynamic marking of *mp*. The second staff contains a bass line with accents. The key signature remains one sharp.

STRAIGHT CUT - Ilio Volante - TRUMPET in Bb 2

F

14



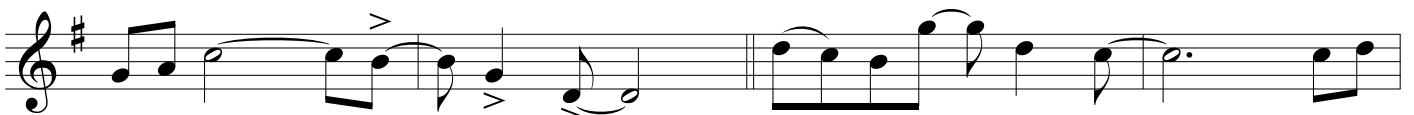
G



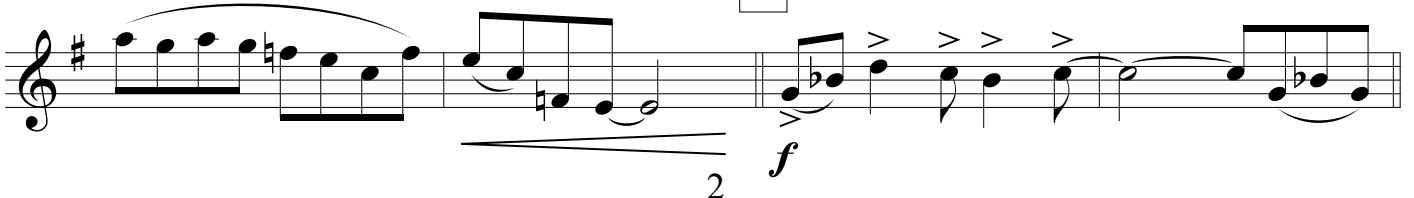
H



I



J



STRAIGHT CUT - Ilio Volante - TRUMPET in Bb 2

Musical notation for the first system, featuring two first and second endings. The first ending is marked with a '1.' and the second ending with a '2.'. Both endings include accents (>) over the notes.

Musical notation for the second system, a single staff with eighth and quarter notes, including slurs and accents.

Musical notation for the third system, a single staff with quarter and eighth notes, including slurs and accents.

**K**

Musical notation for the fourth system, marked with a 'K' box. It features a single staff with quarter and eighth notes, including slurs and accents.

Musical notation for the fifth system, a single staff with quarter and eighth notes, including slurs and accents.

**L**

Musical notation for the sixth system, marked with an 'L' box. It features a single staff with eighth and quarter notes, including slurs and accents.

Musical notation for the seventh system, a single staff with eighth and quarter notes, including slurs and accents.

**M**

Musical notation for the eighth system, marked with an 'M' box. It features a single staff with eighth and quarter notes, including slurs and accents. Dynamic markings *fp* and *ff* are present at the bottom of the system.