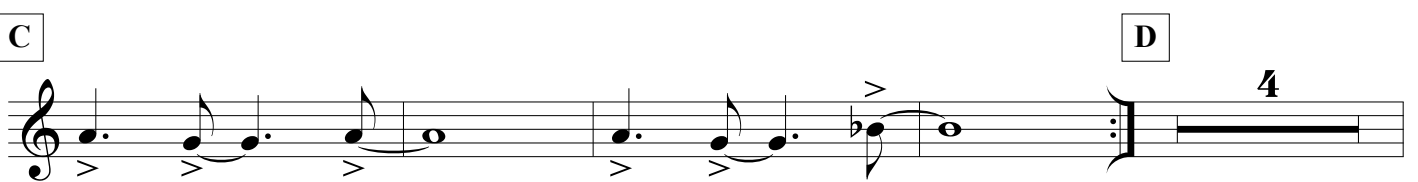


STRAIGHT CUT

Corno in Fa 1
(Horn in F 1)

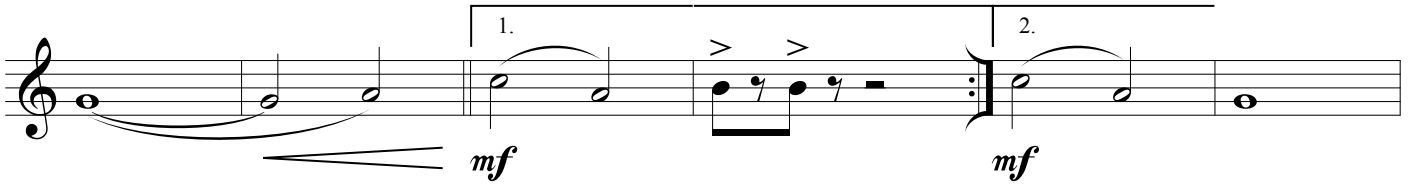
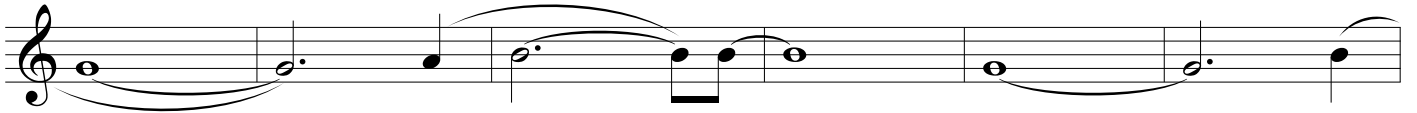
by ILIO VOLANTE

$\text{♩} = 160$



STRAIGHT CUT - Ilio Volante - HORN in F 1

F



G



H



I



STRAIGHT CUT - Illo Volante - HORN in F 1

J

First line of musical notation for section J, featuring a treble clef, a key signature of one flat, and a 3/4 time signature. The staff contains a sequence of notes with accents and a dynamic marking of *f* (forte) indicated by a wedge-shaped hairpin.

Second line of musical notation for section J, including first and second endings marked with '1.' and '2.' above the notes. The staff continues with notes and accents, ending with a double bar line.

Third line of musical notation for section J, continuing the melodic line with notes and accents.

K

Single line of musical notation for section K, consisting of a sequence of notes with accents.

L

Single line of musical notation for section L, consisting of a sequence of notes with accents.

M

First line of musical notation for section M, featuring a treble clef, a key signature of one flat, and a 3/4 time signature. The staff contains a sequence of notes with accents and a dynamic marking of *fp* (forzando) indicated by a wedge-shaped hairpin.

Second line of musical notation for section M, continuing the melodic line with notes and accents. It includes a dynamic marking of *ff* (fortissimo) indicated by a wedge-shaped hairpin.