

Sassofono Contralto
(Alto Sax)

STRAIGHT CUT

by ILIO VOLANTE

♩ = 160

A

Section A, first two staves. The first staff begins with a treble clef, a key signature of two sharps (F# and C#), and a common time signature (C). It features a whole rest with an '8' above it, followed by a double bar line and a repeat sign. The music then continues with eighth notes and quarter notes, marked with a forte (*f*) dynamic. The second staff continues the melodic line with eighth notes and quarter notes, some with accents (>).

B

Section B, two staves. The first staff starts with a treble clef, two sharps key signature, and common time. It begins with a forte (*f*) dynamic and contains a series of eighth and quarter notes, some with accents. The second staff continues the melodic line with eighth notes and quarter notes, some with accents.

C

Section C, one staff. It continues the melodic line with eighth and quarter notes, some with accents, ending with a double bar line and repeat sign.

D

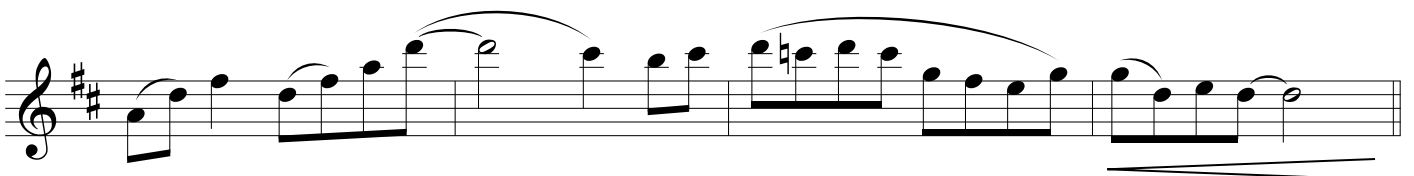
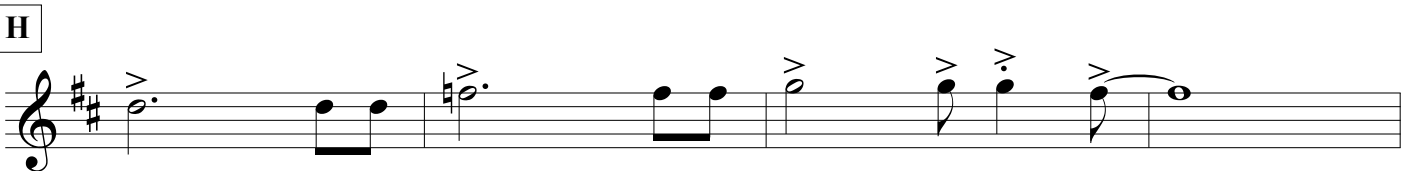
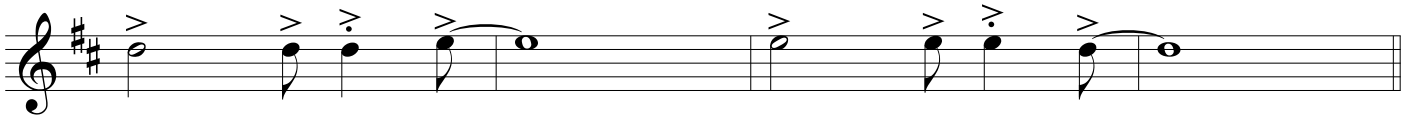
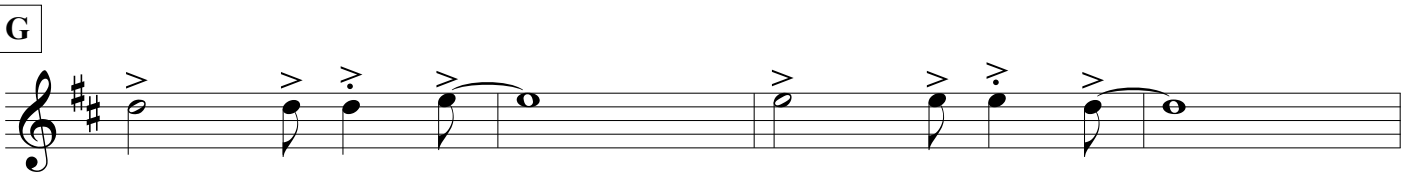
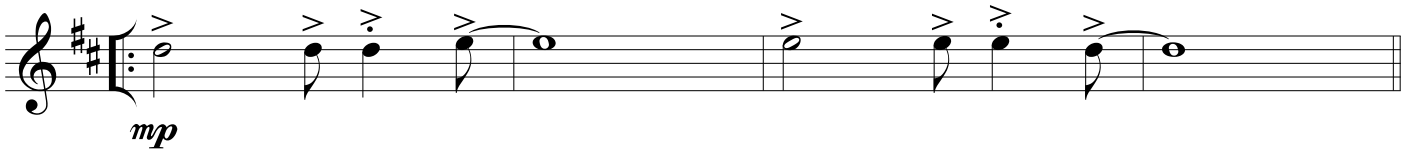
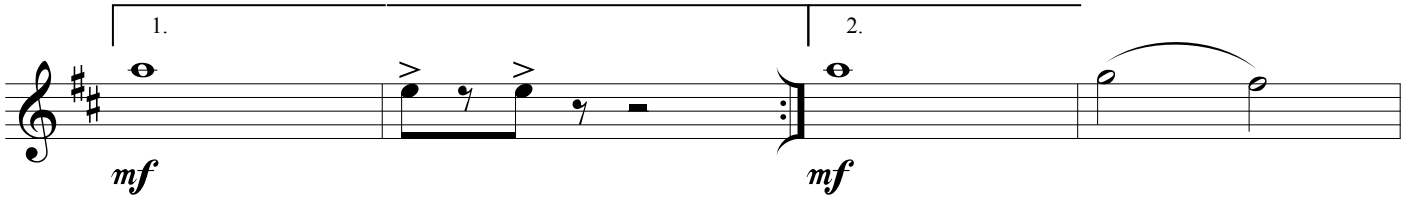
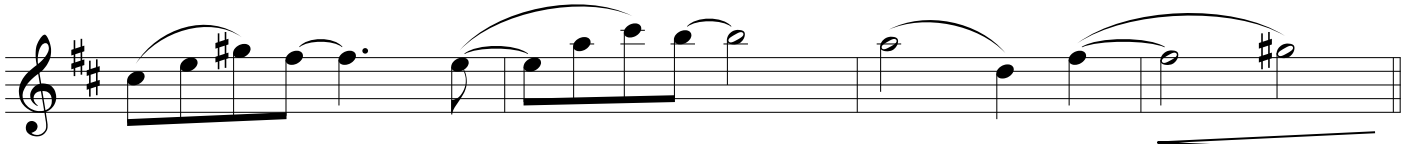
E

Sections D and E, two staves. Section D starts with a treble clef, two sharps key signature, and common time. It features a whole rest with a '4' above it, followed by a double bar line and a repeat sign. Section E begins with a whole rest with an '8' above it, followed by a double bar line and a repeat sign. The music then continues with eighth notes and quarter notes, marked with a mezzo-piano (*mp*) dynamic. The second staff continues the melodic line with eighth notes and quarter notes, some with accents.

F

Section F, two staves. The first staff starts with a treble clef, two sharps key signature, and common time. It features a whole rest with a '6' above it, followed by a double bar line and a repeat sign. The music then continues with eighth notes and quarter notes, some with accents. The second staff continues the melodic line with eighth notes and quarter notes, some with accents.

STRAIGHT CUT - Ilio Volante - ALTO SAX



STRAIGHT CUT - Ilio Volante - ALTO SAX

J

f

1.

2.

K

L

M

fp *ff*

Detailed description: This block contains the musical notation for sections J, K, L, and M. Section J is marked with a forte (*f*) dynamic and includes two first and second endings. Section K continues the melodic line. Section L features a series of eighth-note patterns. Section M concludes with a dynamic shift from *fp* to *ff*. The key signature is two sharps (F# and C#).