

SPINTA VERSO LA CUSPIDE - Ilio Volante - SNARE DRUM

F

Musical notation for section F, snare drum part. It consists of three staves. The first staff shows a rhythmic pattern of eighth notes with accents (>) and a repeat sign. The second staff continues the pattern, with a first ending bracket labeled '1.' and a double bar line. The third staff shows a second ending bracket labeled '2.' followed by a fermata and a dynamic marking of *ff* (fortissimo) with a half note. Below the second and third staves are two horizontal lines. The bottom staff shows a sequence of quarter notes with a dynamic marking of *mf* (mezzo-forte).

G

Musical notation for section G, snare drum part. It consists of two staves. The first staff shows a rhythmic pattern of eighth notes with accents (>) and a dynamic marking of *mf* (mezzo-forte). The second staff continues the pattern, ending with a fermata and a dynamic marking of *mf*.

H

Musical notation for section H, snare drum part. It consists of two staves. The first staff shows a rhythmic pattern of eighth notes with accents (>) and a dynamic marking of *mp* (mezzo-piano). The second staff continues the pattern, ending with a fermata.

I

Musical notation for section I, snare drum part. It consists of two staves. The first staff shows a rhythmic pattern of eighth notes with accents (>) and a dynamic marking of *mp* (mezzo-piano). The second staff continues the pattern, ending with a fermata.

SPINTA VERSO LA CUSPIDE - Ilio Volante - SNARE DRUM

J

Two staves of musical notation for section J. Each staff contains a sequence of 16 eighth notes. The first four notes in each staff have an accent (>) above them. A bar line is placed after the eighth note in each staff.

K

One staff of musical notation for section K, containing a sequence of 16 eighth notes. The first four notes have an accent (>) above them. A bar line is placed after the eighth note.

L

One staff of musical notation for section L. It begins with 12 eighth notes, the first four with accents. A bar line follows. The next measure contains a triplet of eighth notes, with the first note accented. A bar line follows. The final measure contains a triplet of eighth notes, with the first note accented. A bar line follows. The dynamic *f* is written below the first triplet.

Two staves of musical notation for section L. The first staff shows a first ending (1.) and a second ending (2.) bracketed over a measure. The second staff begins with a double bar line, followed by a quarter rest, then a quarter note with an accent, and a triplet of eighth notes with accents. The dynamic *ff* is written below. This is followed by a bar line, a quarter rest, a quarter note with an accent, and a triplet of eighth notes with accents. The dynamic *f* is written below.

One staff of musical notation for section L, containing a sequence of 16 eighth notes. The first four notes have an accent (>) above them. A bar line is placed after the eighth note.

One staff of musical notation for section L, containing a sequence of 16 eighth notes. The first four notes have an accent (>) above them. A bar line is placed after the eighth note.

M

One staff of musical notation for section M. It begins with 12 eighth notes, the first four with accents. A bar line follows. The next measure contains a triplet of eighth notes with accents. A bar line follows. The final measure contains a quarter note with an accent. The dynamic *ff* is written below.

N

Two staves of musical notation for section N. The first staff begins with a quarter rest, followed by 12 eighth notes, the first four with accents. A bar line follows. The next measure contains a triplet of eighth notes with accents. A bar line follows. The final measure contains a quarter note with an accent. The dynamic *ff* is written below. The second staff begins with a quarter rest, followed by 12 eighth notes, the first four with accents. A bar line follows. The final measure contains a quarter note with an accent. The dynamic *mf* is written below.

One staff of musical notation for section N, containing a sequence of 16 eighth notes. The first four notes have an accent (>) above them. A bar line is placed after the eighth note.

SPINTA VERSO LA CUSPIDE - Ilio Volante - SNARE DRUM

O

Musical notation for section O, consisting of two staves. The first staff contains a sequence of quarter notes with accents (>) and eighth notes with accents (>). The second staff continues the sequence with quarter notes and eighth notes, ending with a quarter rest and a double bar line. The dynamic marking *p* is centered below the first staff.

Musical notation for section P, consisting of two staves. The first staff contains a sequence of quarter notes with accents (>) and eighth notes with accents (>). The second staff continues the sequence with quarter notes and eighth notes, ending with a quarter rest and a double bar line.

P

Q

R

Musical notation for sections P, Q, and R, consisting of two staves. The first staff shows section P (4 measures), section Q (16 measures), and section R (16 measures) as solid black bars. Section R begins with a repeat sign and a dynamic marking of *mf*. The second staff continues with eighth notes and quarter notes.

Musical notation for section S, consisting of two staves. The first staff contains quarter notes and eighth notes. The second staff continues the sequence with quarter notes and eighth notes.

Musical notation for section S, consisting of two staves. The first staff contains quarter notes and eighth notes. The second staff continues the sequence with quarter notes and eighth notes.

S

Musical notation for section S, consisting of two staves. The first staff contains quarter notes and eighth notes. The second staff continues the sequence with quarter notes and eighth notes.

Musical notation for section S, consisting of two staves. The first staff contains quarter notes and eighth notes. The second staff continues the sequence with quarter notes and eighth notes.

Musical notation for section S, consisting of two staves. The first staff contains quarter notes and eighth notes. The second staff continues the sequence with quarter notes and eighth notes.

T

Musical notation for section T, consisting of two staves. The first staff contains quarter notes and eighth notes. The second staff continues the sequence with quarter notes and eighth notes, ending with a double bar line. The dynamic marking *mp* is centered below the second staff.

Musical notation for section T, consisting of two staves. The first staff contains quarter notes and eighth notes. The second staff continues the sequence with quarter notes and eighth notes.

SPINTA VERSO LA CUSPIDE - Ilio Volante - SNARE DRUM

U

Musical staff with notes and rests.

Musical staff with notes and rests, including a first ending bracket labeled '1.'

Musical staff with notes and rests, including a second ending bracket labeled '2.'

Musical staff with notes and rests, including a box labeled 'V' and a fermata.

Musical staff with notes and rests, including a tempo marking $\text{♩} = 90$ and dynamic markings *ff* and *mp*.

Musical staff with notes and rests.

Musical staff with notes and rests.

Musical staff with notes and rests, including a box labeled 'Z'.

Musical staff with notes and rests, including a first ending bracket and a circled '1'.

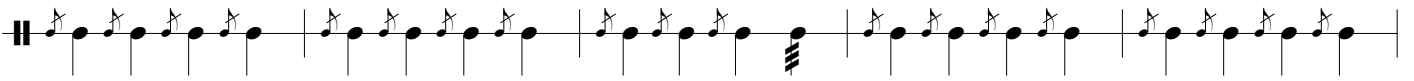
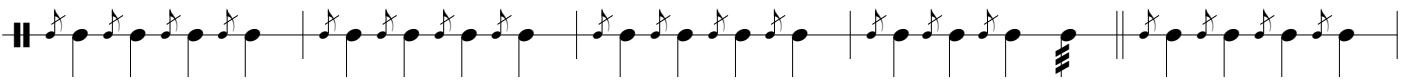
Musical staff with notes and rests.

SPINTA VERSO LA CUSPIDE - Ilio Volante - SNARE DRUM

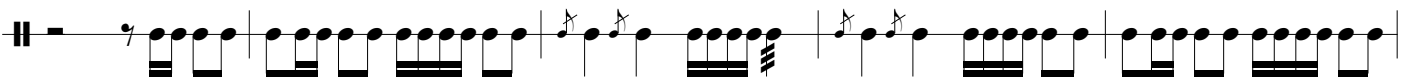
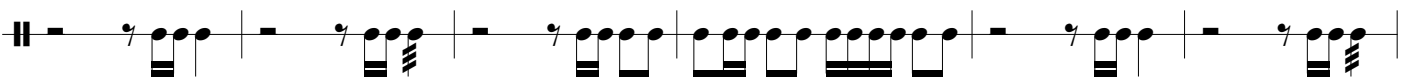
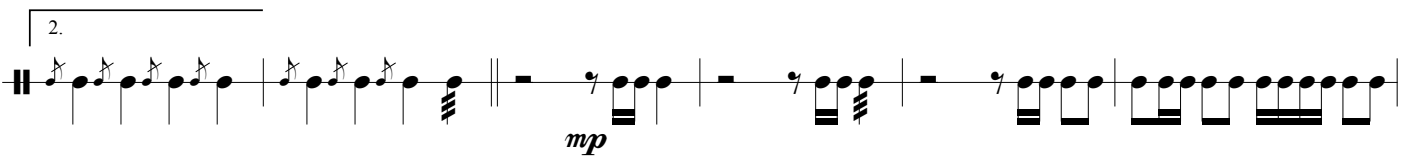
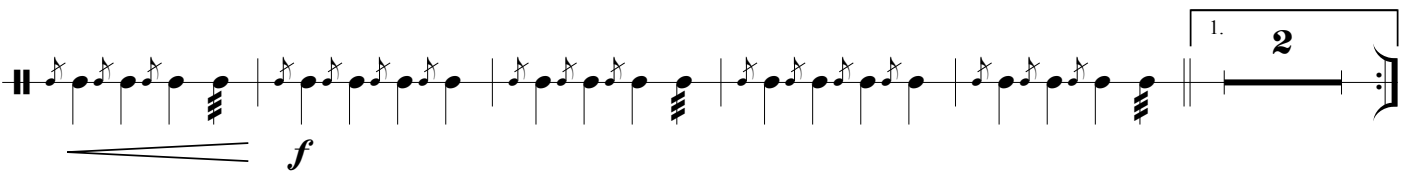
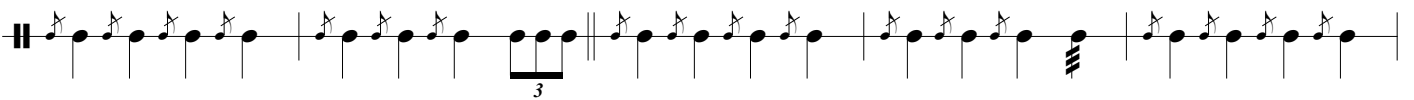
2



3



4



5



6

7

8

9



SPINTA VERSO LA CUSPIDE - Ilio Volante - SNARE DRUM

10

$\text{♩} = 180$

11

4 5 12 4

12

mp

13

14

f

p

SPINTA VERSO LA CUSPIDE - Ilio Volante - SNARE DRUM

15

Musical notation for measure 15, featuring a treble clef, a 6/8 time signature, and a sequence of notes and rests.

16

Musical notation for measure 16, featuring a treble clef and a sequence of notes and rests.

Musical notation for measure 16, featuring a treble clef and a sequence of notes and rests.

17

Musical notation for measure 17, featuring a treble clef and a sequence of notes and rests.

Musical notation for measure 17, featuring a treble clef and a sequence of notes and rests.

18

Musical notation for measure 18, featuring a treble clef, a repeat sign, and the dynamic marking *mf*.

Musical notation for measure 18, featuring a treble clef and a sequence of notes and rests.

19

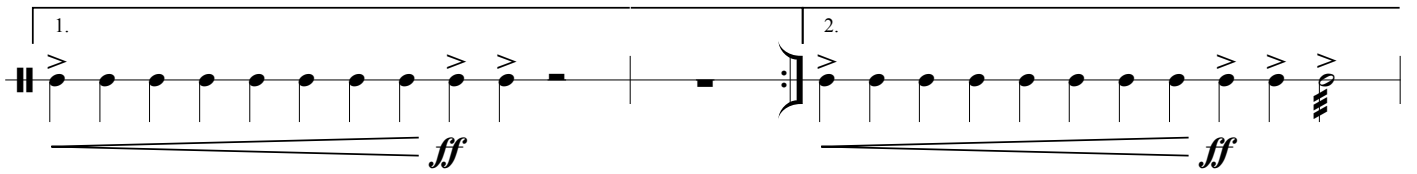
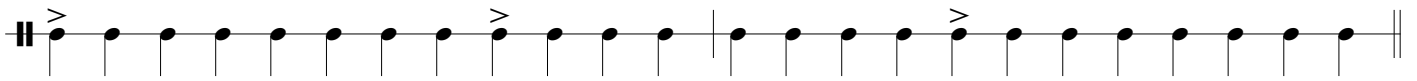
Musical notation for measure 19, featuring a treble clef and a sequence of notes and rests.

Musical notation for measure 19, featuring a treble clef and a sequence of notes and rests.

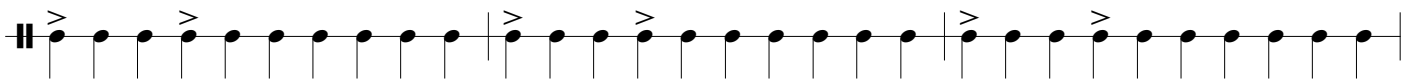
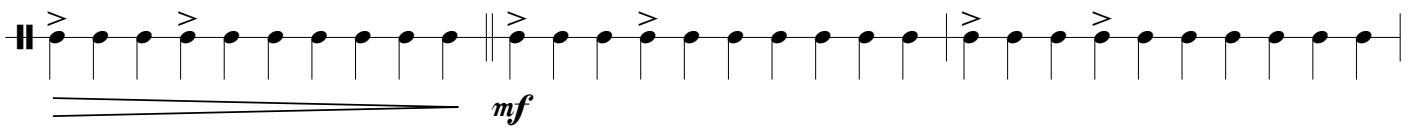
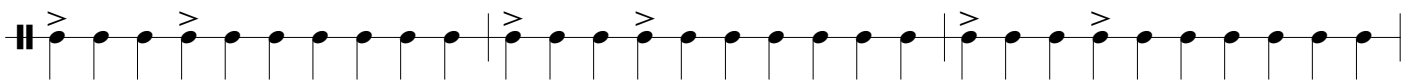
20

Musical notation for measure 20, featuring a treble clef, a dynamic marking *f*, and accents over notes.

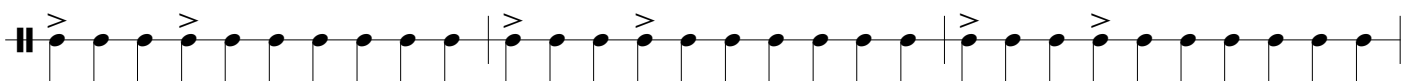
SPINTA VERSO LA CUSPIDE - Ilio Volante - SNARE DRUM



21



22



SPINTA VERSO LA CUSPIDE - Ilio Volante - SNARE DRUM

23

First staff of exercise 23: A sequence of quarter notes on a single staff. The first two notes have accents (>). A dynamic marking of *f* is placed below the staff. A fermata is placed over the final note.

Second staff of exercise 23: A sequence of quarter notes on a single staff. Accents (>) are placed over the first, third, and fifth notes.

Third staff of exercise 23: A sequence of quarter notes on a single staff. Accents (>) are placed over the first, third, and fifth notes.

24

First staff of exercise 24: A sequence of quarter notes on a single staff. Accents (>) are placed over the first, third, and fifth notes.

Second staff of exercise 24: A sequence of quarter notes on a single staff. Accents (>) are placed over the first, third, and fifth notes.

Third staff of exercise 24: A sequence of quarter notes on a single staff. Accents (>) are placed over the first, third, and fifth notes.

25

First staff of exercise 25: A sequence of eighth notes on a single staff. A dynamic marking of *ff* is placed below the staff.

Second staff of exercise 25: A sequence of eighth notes on a single staff.

Third staff of exercise 25: A sequence of eighth notes on a single staff.

26

First staff of exercise 26: A sequence of quarter notes on a single staff. The first five notes have accents (>). A dynamic marking of *fp* is placed below the staff. A slur covers the next three notes. A dynamic marking of *sfz* is placed below the staff. The final note has an accent (>).