

Tuba

# SCIA MARINA

For Tuba & Clarinet in Bb

by ILIO VOLANTE

♩ = 100

The first staff of music is in bass clef, 2/4 time, and B-flat major. It begins with a dynamic marking of *mf*. The melody features eighth and sixteenth notes, with a triplet of eighth notes in the second measure. The dynamic markings *mf* and *mp* are used throughout the staff.

A

Section A is marked with a repeat sign. It starts with a dynamic of *mf* and includes a crescendo leading to a *p* dynamic, followed by a *f* dynamic at the end.

B

Section B begins with a *p* dynamic and features a series of eighth notes with a slight crescendo.

C

Section C starts with a *mf* dynamic, followed by a *p* dynamic, and ends with a repeat sign.

D

Section D begins with a *mf* dynamic and consists of a steady eighth-note pattern.

E

Section E starts with a *p* dynamic and includes a triplet of eighth notes in the final measure.

F

Section F begins with a *f* dynamic and features a triplet of eighth notes with accents.

G

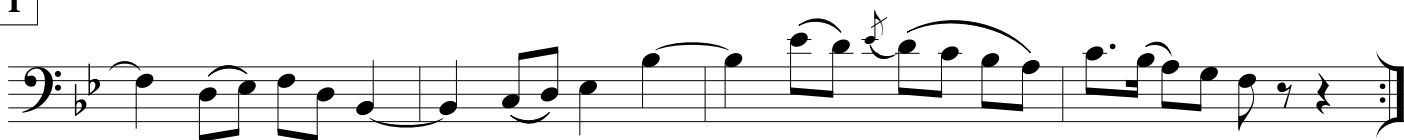
Section G starts with a *p* dynamic and consists of eighth notes with a slight crescendo.

H

Section H begins with eighth notes and concludes with a half note.

SCIA MARINA - Ilio Volante - TUBA

I



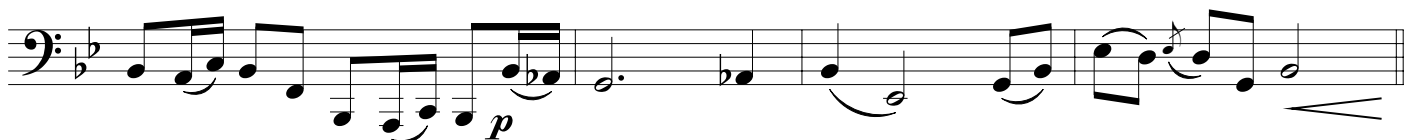
J



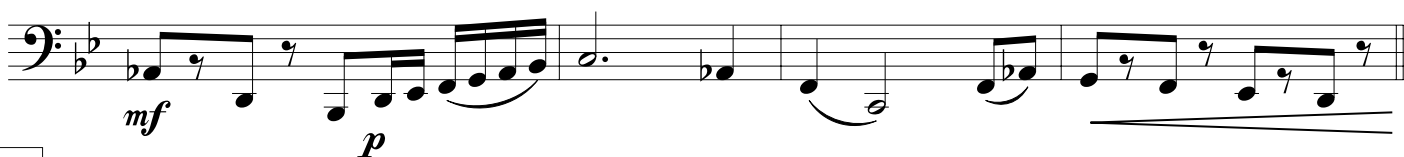
K



L



M



N

