

# RIDING THE PRAIRIE

Trombone 2

*A Cavallo Nella Prateria*

by ILIO VOLANTE

♩ = 80

A

B

♩ = 130

Musical notation for section A and B. Section A consists of two measures with a fermata over the first note. Section B consists of two measures with a fermata over the first note. The tempo changes to 130 beats per minute.

Musical notation for section C, featuring a triplet of eighth notes. The dynamic marking is *mf*.

C

Musical notation for section C, featuring a rhythmic pattern of eighth notes.

Musical notation for section C, featuring a rhythmic pattern of eighth notes.

D

Musical notation for section D, featuring a rhythmic pattern of eighth notes.

Musical notation for section D, featuring a rhythmic pattern of eighth notes.

E

Musical notation for section E, featuring a rhythmic pattern of eighth notes.

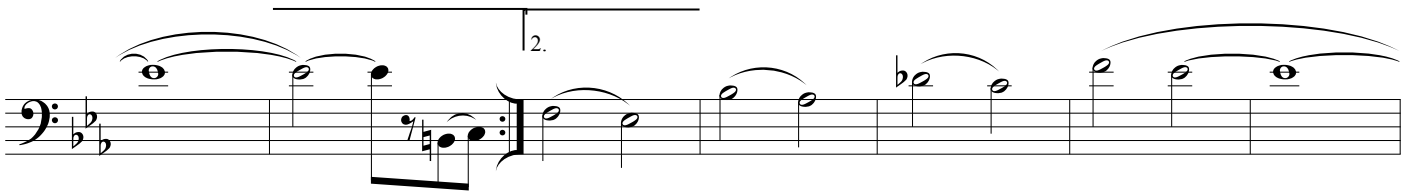
Musical notation for section E, featuring a rhythmic pattern of eighth notes and a triplet. The dynamic marking is *f*.

RIDING THE PRAIRIE - Ilio Volante- TROMBONE 2

F

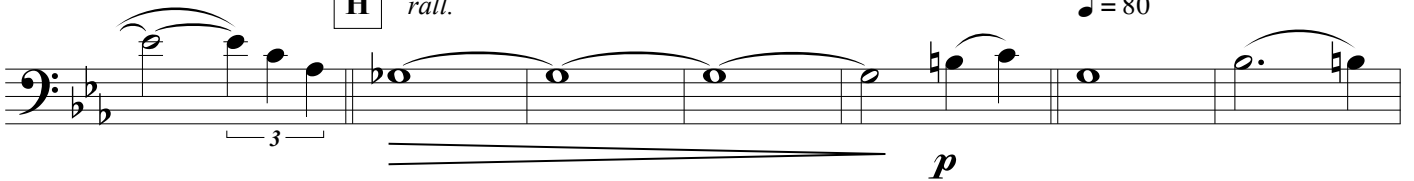


G



H *rall.*

♩ = 80



I

*rall. molto*

