

RIDING THE PRAIRIE

Corno in Mib 3
(Horn in Eb 3)

A Cavallo Nella Prateria

by ILIO VOLANTE

♩ = 80

A

B

♩ = 130

Musical notation for section A and B. Section A consists of two measures with a fermata over the first measure, marked with a '2' above the staff. Section B consists of two measures with a fermata over the first measure, marked with an '8' above the staff. The tempo changes to 130 bpm. The dynamic marking *mf* is present.

Musical notation for section C, consisting of five measures of eighth notes.

C

Musical notation for section C, consisting of five measures of eighth notes, ending with a sharp sign and a slur.

Musical notation for section C, consisting of five measures of eighth notes, ending with a slur.

D

Musical notation for section D, consisting of five measures of eighth notes, ending with a flat sign.

Musical notation for section D, consisting of five measures of eighth notes, ending with a slur and an accent (>).

E

Musical notation for section E, consisting of five measures of eighth notes.

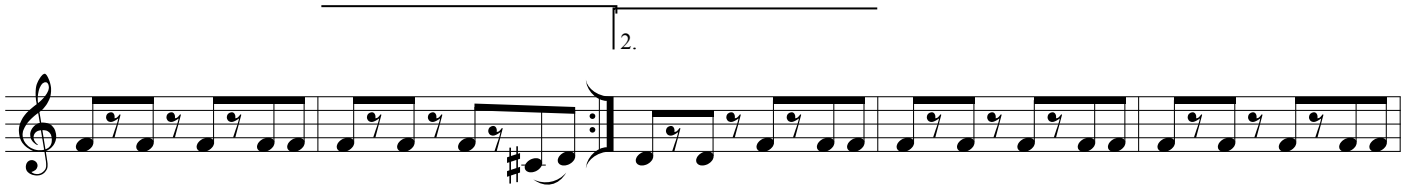
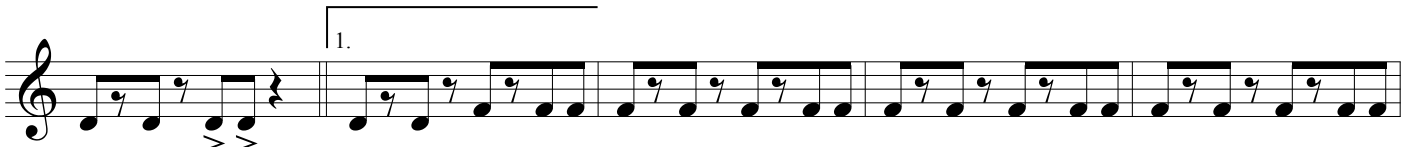
Musical notation for section E, consisting of five measures of eighth notes, ending with a sharp sign and a slur.

F

Musical notation for section F, consisting of five measures of eighth notes, starting with a dynamic marking *f*.

RIDING THE PRAIRIE - Ilio Volante - CORNO in Mib 3/HORN in Eb 3

G



H *rall.*



$\text{♩} = 80$



I

rall. molto

