

Oboe

# IL REGNO DEGLI ELCI

"Fantasia for Wind Orchestra"

♩ = 100

A

by ILIO VOLANTE

Musical notation for section A, measures 1-10. The key signature is three flats (B-flat, E-flat, A-flat) and the time signature is common time (C). Measure 1 contains a whole rest with a '7' above it. Measure 2 starts with a triplet of eighth notes (G4, F4, E4) marked *mp*. Measure 3 continues the triplet (D4, C4, B3) marked *mf*. Measure 4 has a triplet of eighth notes (A3, G3, F3) marked *mf*. Measure 5 has a triplet of eighth notes (E3, D3, C3) marked *mf*. Measure 6 has a triplet of eighth notes (B2, A2, G2) marked *mf*. Measure 7 has a triplet of eighth notes (F2, E2, D2) marked *mf*. Measure 8 has a triplet of eighth notes (C2, B1, A1) marked *mf*. Measure 9 has a triplet of eighth notes (G1, F1, E1) marked *mf*. Measure 10 has a triplet of eighth notes (D1, C1, B0) marked *mf*. There are also some grace notes and accents in measures 6-10.

Musical notation for section B, measures 11-20. The key signature is three flats and the time signature is common time. Measure 11 starts with a whole rest marked *f*. Measure 12 has a quarter note (G4) marked *f*. Measure 13 has a quarter note (F4) marked *f*. Measure 14 has a quarter note (E4) marked *f*. Measure 15 has a quarter note (D4) marked *f*. Measure 16 has a quarter note (C4) marked *f*. Measure 17 has a quarter note (B3) marked *f*. Measure 18 has a quarter note (A3) marked *f*. Measure 19 has a quarter note (G3) marked *f*. Measure 20 has a quarter note (F3) marked *f*. There are accents in measures 12-15.

Musical notation for sections C and D, measures 21-25. The key signature is three flats and the time signature is common time. Measure 21 has a quarter note (E4) marked *mp*. Measure 22 has a quarter note (D4) marked *mp*. Measure 23 has a quarter note (C4) marked *mp*. Measure 24 has a quarter note (B3) marked *mp*. Measure 25 has a quarter note (A3) marked *mp*. Section D starts at measure 24 with a whole rest marked '4' and ends at measure 25 with a whole rest marked '7'.

Musical notation for section E, measures 26-35. The key signature is three flats and the time signature is common time. Measure 26 has a quarter note (G4) marked *mp*. Measure 27 has a quarter note (F4) marked *mp*. Measure 28 has a quarter note (E4) marked *mp*. Measure 29 has a quarter note (D4) marked *mp*. Measure 30 has a quarter note (C4) marked *mp*. Measure 31 has a quarter note (B3) marked *mp*. Measure 32 has a quarter note (A3) marked *mp*. Measure 33 has a quarter note (G3) marked *mp*. Measure 34 has a quarter note (F3) marked *mp*. Measure 35 has a quarter note (E3) marked *mp*. There are some grace notes and accents in measures 26-35.

IL REGNO DEGLI ELCI - Ilio Volante - OBOE

F

Musical notation for section F, consisting of two staves. The first staff begins with a dynamic marking of *mf* and contains a triplet of eighth notes. The second staff continues the melodic line with another triplet of eighth notes.

G

Musical notation for section G, a single staff featuring a continuous eighth-note pattern with a triplet of eighth notes.

H

Musical notation for section H, a single staff with a continuous eighth-note pattern that concludes with a double bar line and repeat dots.

I

Musical notation for section I, a single staff with a dynamic marking of *mp*. It includes a triplet of eighth notes and a measure with a fermata. A measure with a fermata is also present later in the section.

J

Musical notation for section J, a single staff with a measure containing a fermata.

K

Musical notation for section K, a single staff featuring a triplet of eighth notes and a measure with a fermata.

L

Musical notation for section L, a single staff with a measure containing a fermata.

M

Musical notation for section M, a single staff with a measure containing a fermata.

N

Musical notation for section N, a single staff with a dynamic marking of *mp* and a trill. It concludes with a measure containing a fermata.

$\text{♩} = 90$

Musical notation for section O, a single staff with a dynamic marking of *mp*. It begins with a measure containing a fermata and continues with a melodic line.

O

Musical notation for section O, a single staff with a dynamic marking of *mp*. It continues the melodic line from the previous staff.

IL REGNO DEGLI ELCI - Ilio Volante - OBOE



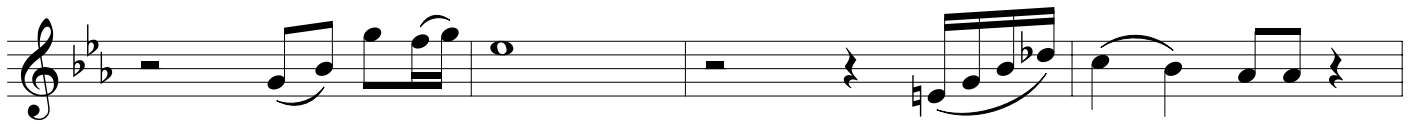
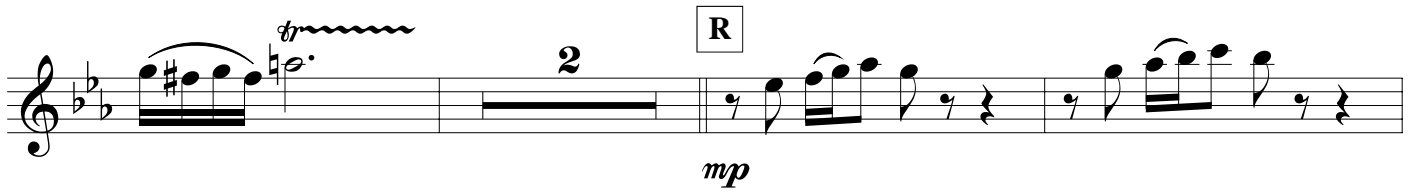
P



Q



R

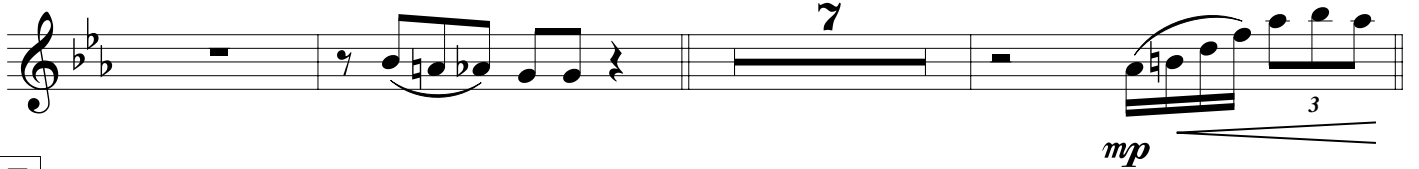


S

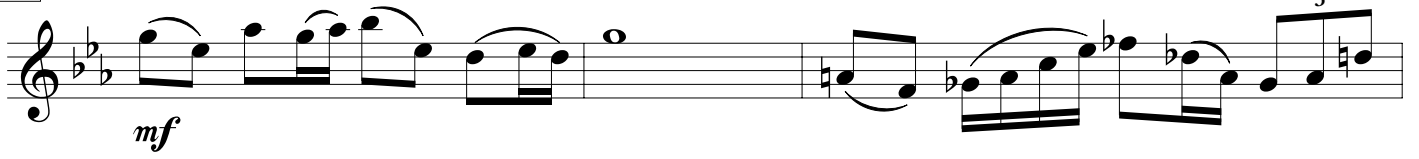


accel.

♩ = 100



T



IL REGNO DEGLI ELCI - Ilio Volante - OBOE

U

Musical score for Oboe, measures 1-12. The key signature is three flats (B-flat, E-flat, A-flat). The score consists of four staves. The first staff begins with a treble clef and a key signature of three flats. It contains a series of eighth and sixteenth notes, some beamed together, with a triplet of eighth notes marked with a '3' and a dynamic marking of *f*. The second staff continues with similar rhythmic patterns, including a dynamic marking of *mf*. The third staff features a dynamic marking of *f* and *mf*. The fourth staff concludes the section with a key signature change to two flats (B-flat, E-flat).

V

Musical score for Oboe, measures 13-18. The key signature is two flats (B-flat, E-flat). The score consists of two staves. The first staff begins with a treble clef and a key signature of two flats. It contains a series of eighth and sixteenth notes, some beamed together, with a dynamic marking of *mp*. The second staff continues with similar rhythmic patterns, including a dynamic marking of *pp* and a four-measure rest marked with a '4'.