

# REGGAE NELLA NOTTE

Bass

Words & Music by ILIO VOLANTE

$\text{♩} = 140$   
Drum Fill

A

B

8

The first system of the bass line consists of 14 measures. It begins with a drum fill (two measures of rests) followed by an 8-measure phrase labeled 'A'. This is followed by a 6-measure phrase labeled 'B'. The notation includes various rhythmic patterns such as eighth notes, quarter notes, and eighth rests, with some notes beamed together. A triplet of eighth notes is indicated with a '3' and a bracket. The key signature has two flats (B-flat and E-flat), and the time signature is common time (C).

C

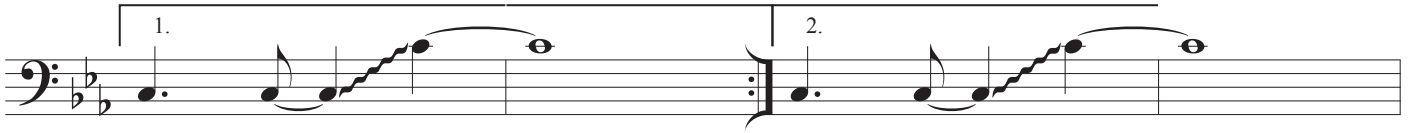
D

8

B to C

The second system of the bass line consists of 4 measures. It starts with an 8-measure phrase labeled 'C' (two measures of rests) followed by a 2-measure phrase labeled 'B to C' (two measures of rests). This is followed by a 6-measure phrase labeled 'D'. The notation continues with eighth notes, quarter notes, and eighth rests.

REGGAE NELLA NOTTE - Ilio Volante - BASS



E



F D to F

