

Violin

# PANSPERMIA

For Violin & Big Band

by ILIO VOLANTE

♩ = 80

A

B

Musical notation for section A and B. Section A consists of a whole rest followed by a double bar line and a second measure with a fermata. Section B begins with a dynamic marking of *mf* and contains a series of eighth and sixteenth notes.

Musical notation for section C, featuring a melodic line with eighth and sixteenth notes, including a triplet of eighth notes.

C

D

Musical notation for section C and D. Section C is a long note with a fermata. Section D contains two measures of whole notes, each with a fermata.

E

Musical notation for section E, featuring a melodic line with eighth and sixteenth notes.

F

Musical notation for section F, featuring a melodic line with eighth and sixteenth notes, including a triplet of eighth notes.

G

Musical notation for section G, featuring a melodic line with eighth and sixteenth notes.

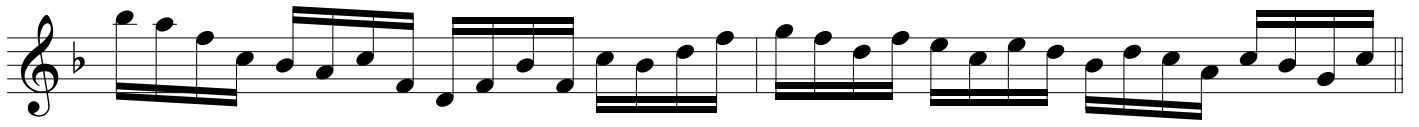
Musical notation for section G, featuring a melodic line with eighth and sixteenth notes, including a triplet of eighth notes.

H

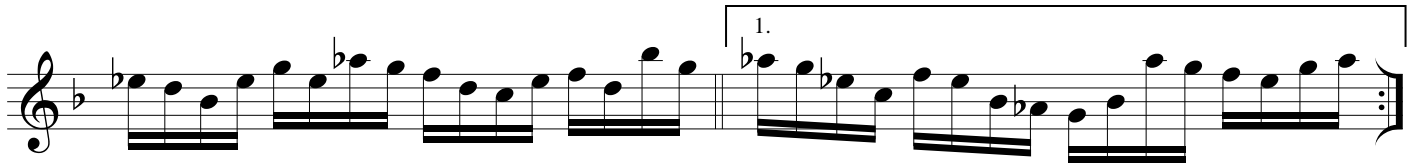
Musical notation for section H, featuring a fast, rhythmic melodic line with eighth and sixteenth notes.

Musical notation for section H, featuring a fast, rhythmic melodic line with eighth and sixteenth notes.

PANSPERMIA - Ilio Volante - VIOLIN



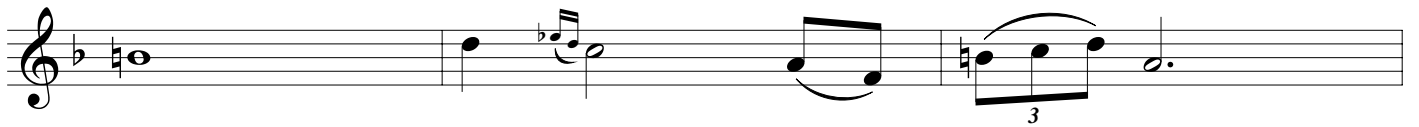
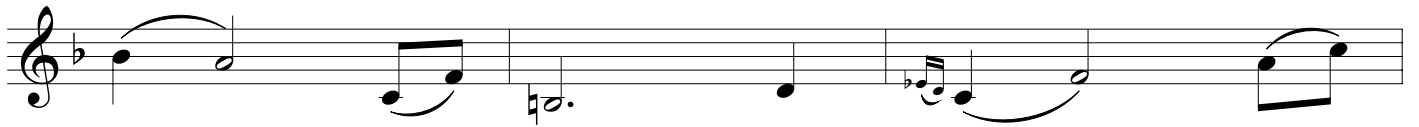
I



J



K



L



Ad. Lib. & Fade Out...

